

# Church of St. Laurence Magazine

Parish including Birchley Heath, Ansley Common  
Ansley Village, Church End

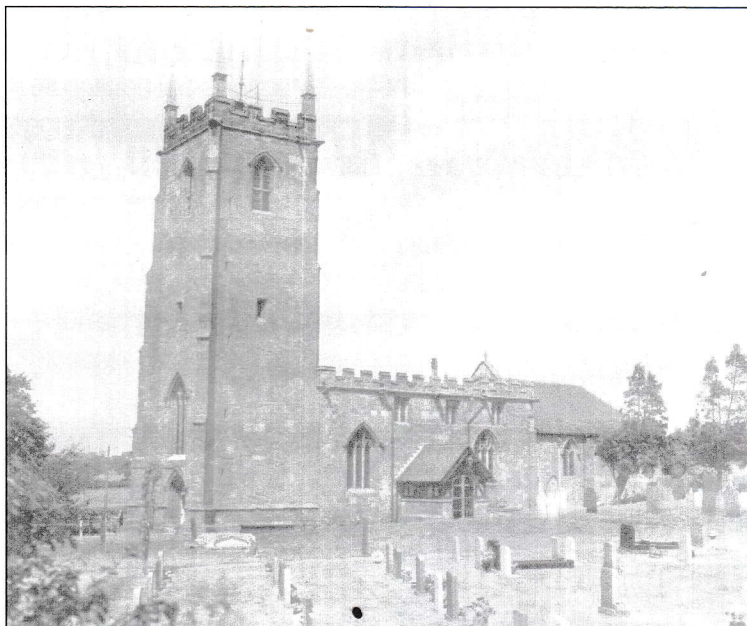
---

No: 1042

December 2012

Price 30p

---



Vicar:

REV. PETER ALLAN

Tel: 024 7639 9070

Wardens:

MARGARET ANTILL

Tel: 01827 874520

MOREEN FREESTONE

Tel: 024 7638 1833

St. Johns Leaders

MARIE COVE

Tel: 024 7639 4114

JOHN COX

Tel: 024 7639 4802

Lay Reader:

MANDY WATTS

Tel: 024 7639 7654

GWYNETH HICKMAN

Tel: 024 7639 8901

**[www.ansleychurch.org](http://www.ansleychurch.org)**

---

**Print Centre 0800 389 4089**

## POLLING STATION

Open 8 a.m. - 10 p.m.

Polling slips can not be issued after 10 p.m.

Please arrive early to avoid possible queues.

When I read this notice outside Ansley Village Hall on November 15th for the Police and Crime Commissioner Elections I wondered whether queues down Birmingham Road were expected late that night. Certainly there was no queue when I went to vote at midday. I don't think they occurred later but I may be wrong.

Sometimes queues are anticipated, but the expected numbers fail to materialise. By contrast sometimes there are queues, or less orderly groups of people, demanding their needs be met and proper measures have not been put in place. Whatever action has been taken is simply not enough. It was expected that Bethlehem would be crowded out for the census and that is just what happened. Those who were late just had to fend for themselves. There was no room for Mary and Joseph in the inn. They were turned away and as a result there was no space for Jesus.

Did the innkeeper have any idea that in saying to Mary and Joseph "Sorry. No vacancies" he was turning God away? Of course not. We can not make the same excuse. We meet Jesus in the poor, the neglected, the sad and the desperate. As we welcome them, we welcome Jesus.

This Christmas make space for Jesus. Make a special effort to take time to pray. Make sure that you come to worship Jesus. (If you can't get out please let me know so I can bring you communion.) And look for Jesus in those who are sad, frustrated, poor, and ill. As you welcome others I pray that you will find Jesus.

And before I close some good news. Thank you so much for responding so positively to my request that you review your giving. It looks as if you gave more generously than I asked and that as a result our income will rise by nearly £90 a week. It is a fantastic response and will enable us to continue and develop our ministry of proclaiming Jesus in word and deed. Fuller details next month but in the meantime

THANK YOU.

HAVE A VERY HAPPY CHRISTMAS,

Your friend and Vicar,

Peter

## December St. Laurence's Church – Services

Sunday 2 <sup>nd</sup>	Advent 1	10.30 a.m.	All Age Worship
		6.30 p.m.	Holy Communion
Sunday 9 <sup>th</sup>	Advent 2	10.30 a.m.	Christingle Service
		6.30 p.m.	Evensong
Sunday 16 <sup>th</sup>	Advent 3	10.30 a.m.	Morning Prayer
		6.30 p.m.	Holy Communion
Sunday 23 <sup>rd</sup>	Advent 4	10.30 p.m.	The Lord is here
		6.30 p.m.	Carol Service
Monday 24 <sup>th</sup>	Christmas Eve	11.30 p.m.	Holy Communion
Tuesday 25 <sup>th</sup>	Christmas Day	10.30 a.m.	Holy Communion
Sunday 30 <sup>th</sup>	Christmas 1	10.30 a.m.	Joint at St John's
		6.30 p.m.	No service

## St John's Church Hall Ansley Common Services

Sunday 2 <sup>nd</sup>	Advent 1	10.30 a.m.	Joint at St Laurence
Sunday 9 <sup>th</sup>	Advent 2	10.30 a.m.	Holy Communion
Sunday 16 <sup>th</sup>	Advent 3	10.30 a.m.	Christingle Service
Sunday 23 <sup>rd</sup>	Advent 4	10.30 a.m.	Holy Communion
Monday 24 <sup>th</sup>	Christmas Eve	10.00 p.m.	Holy Communion
Sunday 30 <sup>th</sup>	Christmas 1	10.30 a.m.	Songs of Praise

## Discussion Groups

Prayers in the Bible – Wednesday 5<sup>th</sup> December 7.30 p.m. at 10 Nuthurst Crescent.

Discussing the Christian Bible – Tuesday 11<sup>th</sup> December at 7 p.m. in St. John's Church Hall.

## From the Registers

### Baptism

October 28<sup>th</sup> was a joyous day for the many generations who attended the baptism of Rosa Evie Farmer. On this wonderful afternoon we committed ourselves to the service of Jesus in the power of the Holy Spirit and prayed that Rosa would grow in the faith to which she had entered at baptism.

### Funerals

The funeral took place on October 31<sup>st</sup> of Mrs Bessie McDermott at St Michael's, New Arley, followed by a committal at Heart of England Crematorium. Including a successful time as local shopkeeper, Bessie had lived in Ansley Village with her beloved husband Den (better known locally as Mac) for many years, until declining powers required her to move with Den to Linden Lodge for greater support. She combined prudence in the organisation of her life and money with a strong business sense and a very generous spirit. Den and Bessie had been married for 67 years. Bessie is deeply mourned by family and friends alike.

### Interment of ashes

On Thursday November 1<sup>st</sup> we interred in St Laurence's Churchyard the mortal remains of Jean Mary Roberts. As we committed her ashes to the ground we thanked God for her life and love and all that she had brought to those who loved her.

Followed by burial in the churchyard the funeral took place at St Laurence's on November 9<sup>th</sup> of John Smith of Ansley Common. From his early years when as a boy he welcomed Terry into his



home, to his final years when he attended the George Eliot hospital to assist students to learn how to diagnose illnesses, John lived his life in the service of others. He had a remarkable sense of humour and delighted in seeing the funny side of life. He was a man of faith and we were greatly privileged that he shared in the life of our church. He is deeply missed by his children and all his family.

### Christmas Tree Festival at St Laurence's Church

The seventh Christmas Tree Festival will be open on the three weekends leading up to Christmas. Admission for an adult is £2.00. Accompanied children have free entry. We hope to welcome many visitors to St Laurence to see 60 trees decorated by people, businesses and organisations from the local area. Opening hours are listed below.

Saturday 8 <sup>th</sup> December	11.00 a.m. – 5.00 p.m.
Sunday 9 <sup>th</sup> December	11.30 a.m. – 6.00 p.m.
Saturday 15 <sup>th</sup> December	11.00 a.m. – 5.00 p.m.
Sunday 16 <sup>th</sup> December	11.30 a.m. – 6.00 p.m.
Saturday 22 <sup>nd</sup> December	11.00 a.m. – 5.00 p.m.
Sunday 23 <sup>rd</sup> December	11.30 a.m. – 6.00 p.m.

The trees will be arriving on Monday 3<sup>rd</sup> and any help to get them into the buckets and into church will be much appreciated.

The main times for decorating are 2-8p.m. on Wednesday 5<sup>th</sup> and Thursday 6<sup>th</sup> December. These decorating times should ensure that the church will be clean and tidy and the programmes printed before the opening on the 8<sup>th</sup>.

Any help throughout the festival, in church or in the annexe, serving refreshments and welcoming people would be much appreciated, as well as the provision of mince pies for the refreshments. Lists are in church for anyone to add their name to help.

If you wish to send fliers about this event in your Christmas cards or would like to hand them to friends please ask for some. There are a few photographs on the church web site

[www.ansleychurch.org/articles/articles.php?id=371](http://www.ansleychurch.org/articles/articles.php?id=371).

Proceeds are in aid of church funds with 10% being given to the Northamptonshire and Warwickshire Air Ambulance. The donations for the memory tree stars are for the churchyard fund.

The first glimpse of the trees on entering the church is a wonderful sight and we hope the festival will bring joy and peace to all who visit.

### Christmas concert at St Laurence

On Friday 14<sup>th</sup> December at 7.30 p.m. Richard & Jess Arrowsmith (of Crucible, Melrose, Hekety and Glorystrokes etc.) will be performing an acoustic concert of English traditional music. Tickets are £7 including mulled wine and a mince pie. To reserve your ticket please call 02476 392555

### Special Christmas Services

Our format of Christmas services will commence with the Christingle service at 10.30 a.m. on Sunday 9<sup>th</sup>. This service is designed for the young, but also gives all ages a fresh look at the Christmas message. The traditional Nine Lessons and Carols will close our Christmas Tree Festival at 6.30 p.m. on Sunday 23<sup>rd</sup> and will follow the usual format.

To celebrate the birth of our Saviour there are the following services.

Christmas Eve Communion 24<sup>th</sup> December 10 p.m. at St. John's

Midnight Communion 24<sup>th</sup> December 11.30 p.m. at St. Laurence

Christmas Day 25<sup>th</sup> December Family Communion Celebration 10.30 a.m. at St. Laurence

Christmas Songs of Praise Joint at St John's Sunday 30<sup>th</sup> December 10.30 a.m.  
NO SERVICES AT ST LAURENCE ON 30<sup>TH</sup>.

### St. John's Christmas Prize Bingo

This event is on 3<sup>rd</sup> December. Eyes down promptly at 7.00 p.m. please and be ready for an enjoyable evening. The October session raised £100.

### Soup, Sweet and Carols at St. John's

There will be another social meal in St. John's Church Hall on Friday 14<sup>th</sup> December at 7.30 p.m. There will be soup and a sweet to eat and then carols to be sung. Tea and coffee will be available but you can bring your own drink if you wish. Tickets are £3.00. Please book your seat early as there are a limited number of places available.

### Quiz night

About 50 people came to our Quiz Night on 9<sup>th</sup> November which was greatly enjoyed by everyone. We wish to thank all who provided prizes, prepared food and helped with the smooth running of the event.. We are also particularly grateful to Sue Ricketts for all the preparations and organising that she undertook. This happy event raised £223 which has been divided equally between the Air Ambulance and the Church Fabric Fund.

### Spurgeon's Child Care and Marie's Christmas Event

Reports next month.

### Christmas Fayre

The Christmas Fayre on 16<sup>th</sup> November, although not particularly well attended, was very enjoyable. The new addition of a bingo game, suggested by Ansley Senior Citizens, proved to be a success and raised £48.00. With the traditional stalls, games and the raffle the total now stands at £640. This figure will increase when wreath money has been received. The singing of traditional carols brought Christmas cheer to those who had braved the poor weather. A very big thank you to all who helped by selling raffle tickets, providing prizes and refreshments, baking for the cake stall, giving items for stalls and organizing the games as well as all who supported the event.

### Shoe boxes

Thank you to everyone who sent a shoebox. Eighteen boxes filled with gifts have been forwarded from this parish.

### St John's Halloween Fancy Dress Party

Everyone had a wonderful time and £155 was raised for hall funds. Thank you to everyone who helped and supported this lovely social event on 26<sup>th</sup> October .

### Prayer Requests

If you would like someone or a particular situation remembered in prayer at our Sunday Services both at St. Laurence and St. John's please hand the slip below to a member of the church congregation or contact the Vicar on 024 7639 9070. Please remember the vicar would be pleased to visit anyone who is sick, but he does need to know, again please ring.

---

Please pray for ..... who is .....



When we hear politicians, footballers etc., talking about millions of pounds and even billions, we can hardly comprehend these amounts of money. When we were young, we had hardly ever heard of millionaires. Even the most well known film stars of the time were not millionaires, and buying and selling footballers for millions was unheard of, and let's face it, we knew nothing of bankers and their bonuses. Money was what you earned for essentials. Our coal was free as our Dad was a miner and as for pocket money – there was no such thing. What we had we earned by running errands, taking pop bottles back, carol singing, and this was only for pennies but paid for us to save for our Mam's Christmas present and for us to go to the cinema, which we attended every week and sometimes twice if we had earned enough. I have never had a £50 note in my possession, but my young granddaughter looked on the internet and showed me a picture of one.

My mother had a saying 'A place for everything and everything in its place' and she lived up to this. We had a button box, a sewing box ( both of which I still have) and a rag bag which we kept in the glory hole for dusters, dish cloths and floor cloths and also old woollens for making pegged rugs. Our Dad kept a torch, candles, matches and a tin box containing birth certificates, marriage lines and insurance policies, and this tin was always taken to the shelter during an air raid. It was very simple then to have a place for everything, as we had so few possessions, but much harder now. My better half says I am a hoarder, but I find many things too precious to throw away e.g. photographs. Up until I was married we could have put all the photographs we had in one small envelope, whereas now I have lots of albums crammed full as well as a large box, and I am assured by one of my granddaughters that she will cherish them after I have gone.

Have you ever wondered where all the stones and pebbles come from in the garden? No matter how many we take out there are always more to take their place, as if they are growing. Then we were passing a field in Galley Common and it was completely covered in stones. Where do they all come from?

We are not even into Advent and the shops are full of Christmas gifts and festive food. It seems that Christmas comes earlier every year, but we know better. It's not Christmas until December 24<sup>th</sup> when the tree is trimmed, the shops are shut, the shopping done and we celebrate the birth of our Saviour, Jesus Christ.

Wishing you a happy Christmas and a healthy, peaceful New Year.

Marie Cove