

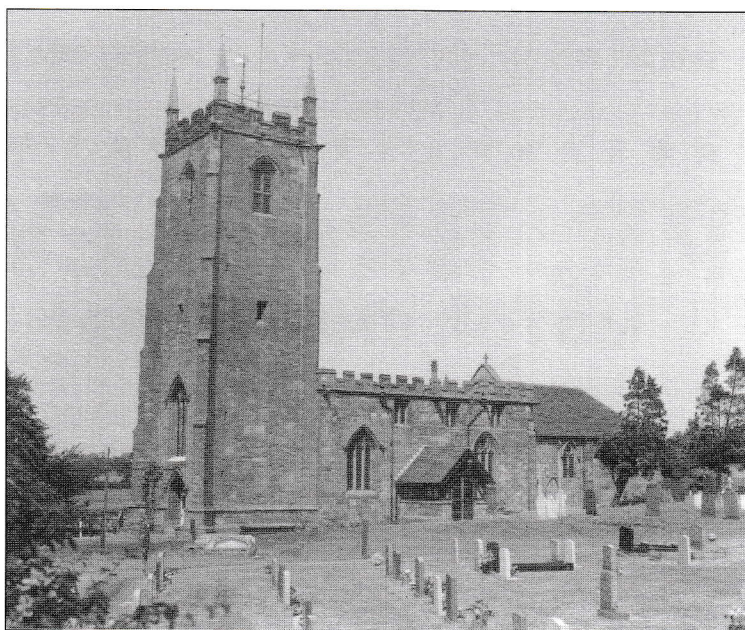
Church of St. Laurence Magazine

Parish including Birchley Heath, Ansley Common
Ansley Village, Church End

No: 965

NOVEMBER 2005

Price 25p



Vicar:

REV. PETER ALLAN

Tel: 024 7639 9070

Wardens:

MARGARET ANTILL

Tel: 01827 874520

MOREEN FREESTONE

Tel: 024 7638 1833

St. Johns Leaders

DAVID & MARIE COVE

Tel: 024 7639 4114

Print Centre 0800 389 4089

November Editorial

Over the past two years I have been delighted to welcome many more children to our church in baptism. But I am also aware that we have failed to do all we can to help them grow within that family. So this is what we are now seeking to do. I have written as if I were talking to a parent or godparent of a newly baptised child.

Because God loves your child

You brought them to church for be baptised. As a church we promised to support you, and to help your child discover God's love within the family of the church.

We are committed to doing all we can to keep our side of the bargain and are aware that too often we have failed our children. We have welcomed children to all our services, but we have not always grasped that, like all of us, they have their own special needs and their own ways of discovering God. Sometimes that means adapting our worship so they too are involved with us in learning and worshipping, sometimes it means letting them discover as children in their own way whilst we worship and learn in a way suitable for us.

So here's what we are doing

There is a Sunday School at St. John's every Sunday morning at 10.30a.m. except on the first Sunday when children share with adults in Family Worship.

On the first and third Sundays of each month at St. Laurence children, and parents if they wish to stay, are invited to the Annexe at 10.30 a.m. for Godly Play – a new and exciting way of learning the Christian faith.

And here's what we're planning from March next year

We shall offer not only baptisms at St. John's and St. Laurence in the morning service but also at St. Laurence at 4p.m. on a Sunday afternoon.

We shall start a monthly service that is lively, fun and family friendly. Over the next few months I will be talking to many families to get that mix that you want- a time, place and format to suit you and your child. We want to create an atmosphere where children and adults together can enjoy the most exciting adventure of all time, the discovery of the wonderful love of God as revealed in Jesus Christ our Lord.

Your friend and vicar,

Peter

November What's On

St. Laurence's Church

Sunday 6 th	3 rd before Advent	10.30 a.m.	All Age Worship & Godly Play
		6.30 p.m.	B.C.P. Holy Communion
Sunday 13 th	Remembrance	10.30 a.m.	Remembrance Day Service
		6.30 p.m.	Evensong
Sunday 20 th	Christ the King	10.30 a.m.	Holy Communion and Healing Service
		6.30 p.m.	Holy Communion and Healing Service
Sunday 27 th	Advent	10.30 a.m.	Baptism
		6.30 p.m.	Evensong

St John's Hall Ansley Common Services

Wednesday 2 nd		9.00 a.m.	Holy Communion
Sunday 6 th	3 rd to Advent	10.30 a.m.	Family Worship & Sunday School
Sunday 13 th	Remembrance	10.30 a.m.	Family Worship
Wednesday 16 th		9.00 a.m.	Morning Prayer
Sunday 20 th	Christ the King	10.30 a.m.	Holy Communion & Sunday School
Sunday 27 th	Advent	10.30 a.m.	Holy Communion & Sunday School
Wednesday 30 th		9.00 a.m.	Morning Prayer

Other Activities at St. John's Church Hall

Mondays	7.00 p.m.	Indoor Bowls
Tuesdays	9.00 – 12.00a.m.	Krazy Kettle Kafé
Tuesdays	7.30 p.m.	Line Dancing
Wednesdays	6.00 p.m.	A.C.Y.C.
Thursdays	7.00 p.m.	Youth Club
Fridays	7.30 p.m.	Ballroom Dancing
Friday 18 th	7.30 p.m.	Fancy Dress Christmas Party

Activities at Village Church Hall

Mondays	7.00 p.m.	Links - Youth Club
Tuesdays	10.00 a.m.	Senior Citizens
Wednesdays	10.00 – 11.30 a.m.	Ansley's Little Angels
Wednesdays	2.00 – 4.00 p.m.	Community Café
Wednesday 2 nd 16 th & 30 th	7.30 p.m.	Bingo
Thursday 10 th	7.30 p.m.	Parish Council Meeting
Thursday 24 th	7.30 p.m.	P.C.C. Meeting

Other Parish activities

Tuesdays	10.00 a.m.	Family History Class (Annexe)
Thursday 10 th & 24 th	7.30 p.m.	Ansley Common Fellowship
Thursday 17 th	7.30 p.m.	Spurgeon Child Care Coffee Evening
Fridays	1.00 p.m.	Art Classes at the Club
Saturday 26 th		Confirmation at the Cathedral

From the Registers

Wedding

On September 17th Graham Sutton married Alison Hall, they were so happy on a lovely day. There were plenty of 'on lookers' when they left the Church in a suitably decked tractor.

Remembrance Day

This year on Sunday 13th we will remember those who have given their lives that we may be free. There will be a joint service starting at 10.30 a.m. at St. Laurence's during which we will observe the two minutes silence at 11 o'clock. The wreaths will be placed at the altar during this service. At the end the wreaths will be returned and with the congregation all will go to the War Memorial for a short time of reflection, and prayer. The wreaths will then be placed at the foot of the War Memorial. There will be light refreshments as usual in the annexe after the service.

Harvest Festival

With decorating taking place now over the two days we were able to completed all tasks in time of the Open Church at 1 p.m., which despite the weather had a few visitors. At the Morning service presentations were made to representatives from the Acorn Children's Hospice and The Nuneaton Hospital League or Friends each organisation receiving a cheque for £485 from the proceeds of our Flower Festival. The beautiful church was much appreciated by all those who attended the services. The children of Nursery Hill School came and gave among other items, well thought through verses on how mankind is abusing nature, and what each of us can do to help reverse some of the damage. They gave a wonderful rendition of 'We plough the fields and scatter'.

The weight of the pumpkin was 91lbs or 42.4 kg. It was won by Saul Tuck.

The sale and supper were a great success. A very enjoyable evening was had by all who came. A total of £184.10 was made on the sale of the produce.

Thank you to everyone who has helped with the harvest in any way. It has been a most enjoyable event.

The Church Tower

We are now in a position to advise you that the P.C.C. have accepted the tender of Boden and Ward at a cost of £45,454. To this must be added the architects fees for overseeing this specialised work. Please remember that there is always the possibility that further problems could be discovered once the work commences. As the faculty has been delayed and the legal work will probably take until December it is highly likely this work will not now begin until the spring. Everyone will be aware of how the Churchyard can be a very cold and windy place in inclement weather. It is, therefore, not hard to imagine that the top of the tower at 75 ft to the parapet and 90 ft to the top of the pinnacles, is not the place to be in the middle of winter.

This project will seriously deplete the fabric fund, which has to be used to keep the Church in good order. If you would like to make a donation towards this work please do contact one of the wardens or the treasurer who will be pleased to hear from you. We would ask that if it is applicable to your circumstances you could consider using the gift aid envelopes that are available.

Spurgeon Child Care

On Thursday 17th Margaret Oliver (024 7639 5674) is holding her annual coffee and box opening evening at her home at 33 Nuthurst Crescent. There will be light refreshments and a bring and buy stall. With plenty of time to chat while Martin opens the boxes. This is a Christian children's charity that raises funds to help support children in Britain less fortunate than our own.

This is a charity that Ansley Church has supported for quite a few years, and we thank you for your continued support.

Advent Sunday – Any room in your home?

From Advent Sunday 27th November until the 4th Sunday in Advent, a Mary and Joseph from a crib will be passing from different homes through the parish. The figures will then be placed in the crib at the morning service. If you would like the figures to spend a night in your home in preparation for Christmas please contact Mandy Watts 024 7639 7654 or Margaret Antill 01827 874520.

Calendars

Again this year we are very grateful to David Oliver for producing 2006 calendars this time of the 2004 Flower Festival. They are available in Church or from Margaret Oliver and are £4 each. The proceeds from the calendars are to go to the fabric fund.

St John's

St. John's Bingo on 3rd October was a great success and a total of £81.30 was raised for hall funds. Thank you to all who helped Hetty and also to Hetty for a very enjoyable evening.

It was during this event that some photographs were taken for us to use in the preparation of the business plan that we are in the process of producing to support our applications for funding the renovation and extension of the hall.

A set of plans have been drawn up and are now on display in the hall for discussion and suggestion. Please do try and have a look, the hall is always open on a Tuesday morning for everyone to visit the Krazy Kettle Kafé also at service times on Sundays and Wednesdays, and let us know your thoughts. It is hoped that we will be applying for permission shortly.

Christmas Fancy Dress Party

On 18th November the ladies of Ansley Common are organising a Christmas Party to commence at 7.30 p.m. with a buffet at 8.00. Tickets to this Fancy Dress Party are £2.50. However at the time of writing there were only a few of the 80 places left. It may be possible to have more places next year if the refurbishment is complete!

Christmas Bazaar

This year the Christmas Bazaar will be held in the Village Church Hall on Friday 2nd December. From 7.30 p.m. We will be having the usual cake stall, Christmas goods, bran tub, etc. However we have decided that the bottle stall is not cost effective (i.e. we are paying more for the bottles than we take). In its place we will have "Sponsor a carol". A list of carols will be produced and any one can then choose their particular favourite carol or carols and pay 50 p for each nomination. The nominations will be counted, and it will be the carol with the most sponsors that will be played first after the refreshments.

Holly wreaths will again be available to order. This year they will be £5.50 each for holly and £6 for holly and ribbon. If you wish to place an order please contact Margaret Antill on 01827 874520 and leave a message.

November, 2005.

I have been asking people what exactly is an I-POD but never got a satisfactory reply. However, it seems it is like a very small transmitter just a little bigger than a mobile phone and it can be used to record T.V. programmes, films and videos, which can be watched wherever and whenever. A news reporter said 'If you miss your favourite soap or programme, you can watch it on your way to work'. I presume this is on a train or coach and not in a car! I cannot imagine that watching anything on such a small screen in very public places would be enjoyable.

Someone wrote up to a magazine enquiring how people from other countries learn English as it is so complicated with so many ways to say certain vowels and was advised that the combination 'ough' can be pronounced nine different ways, as follows:-

"A rough-coated, dough-faced, thoughtful ploughman strode through the streets of Scarborough ; after falling into a slough, he coughed and hiccupped."

Did you spot all nine?

Being an avid knitter, I have been delighted recently to find some really exciting new types of wool. I have just finished a cardigan for our Granddaughter which looks as if it is edged with fur. Also there is a wool that looks like fringing but knits up like velvet and makes beautiful scarves and gloves. It reminds me of when my children were small and we knitted with Rainbow Wool. I loved knitting with it as it was fascinating to see the various patterns emerge. Let's hope the new wools encourage the younger generation to carry on the art of knitting.

While I was doing the main shopping this week, it occurred to me that what I eventually had in my trolley bore hardly any resemblance to my list. Being an eternal optimist, I get a small trolley, only to find it always overflowing. I remember when I would take my grocery book to Stockingford Co-op and then the following Thursday the groceries would be delivered. Not only did I just receive the items ordered, but the cardboard box in which they were delivered, gave my small son many, many hours of play until it finally fell to pieces. I still have the grocery books, and they are a real eye-opener, not only the prices but the limited selection of food.

I hope you enjoyed the beautiful unseasonably warm weather in October, which was amazing, but no mistaking it was Autumn as the trees changed colour to beautiful shades of red and yellow and were a sight to behold, with paths and grass verges carpets of leaves.

Marie Cove.