

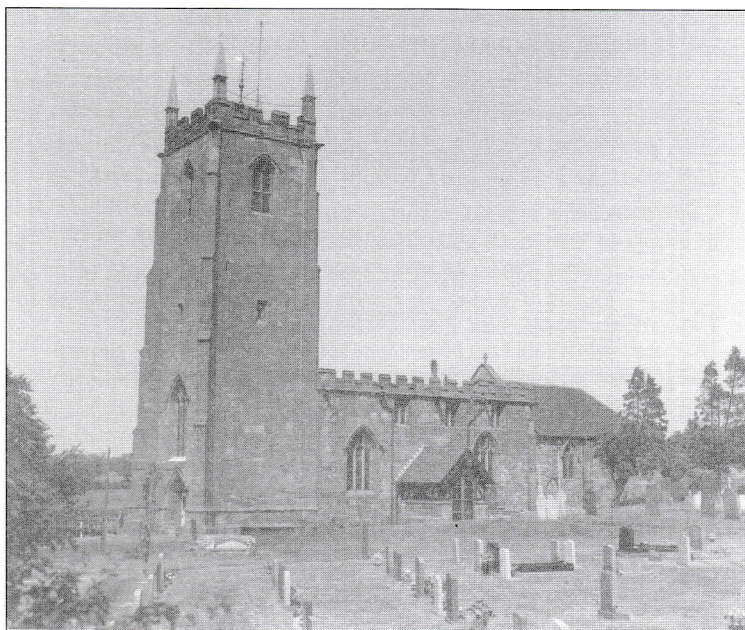
Church of St. Laurence Magazine

Parish including Birchley Heath, Ansley Common
Ansley Village, Church End

No: 953

NOVEMBER 2004

Price 25p



Vicar:

REV. PETER ALLAN

Tel: 024 7639 9070

Wardens:

MARGARET ANTILL

Tel: 01827 874520

MOREEN FREESTONE

Tel: 024 7638 1833

St. Johns Leaders

DAVID & MARIE COVE

Tel: 024 7639 4114

Print Centre 0800 389 4089

November Editorial

November is a month when we look back

November 5 Guy Fawkes - when we celebrate how Parliament was saved from destruction.

November 14 Remembrance Sunday when we shall remember with thanksgiving at the memorials within St. John's and at Church End those who gave their lives to protect our freedom. This year I shall be sharing in the Act of Remembrance at Church End and look forward to meeting you there.

November is a month when we look forward

As you plan ahead try to ensure Christmas is not a burden. Plan to give yourself some peace in December to recall the season of Advent and the promise that Jesus will return. Pray that God's kingdom come, His will be done on earth as it is in heaven.

In the life of our churches we are looking forward to the shared ministry of our new Ministry Leadership Team, which is being authorised by Archdeacon Mark at St. Michael's, New Arley at 10.15 a.m. on Sunday 31 October. I am sorry this was not fixed early enough to feature in last month's issue. Please pray for the men and women you have chosen - Keith Asbury, David Cove, John Cox, Moreen Freestone, Sue Harte, Donald Parr, Ken Steane, Marcia Sutton, Mandy Watts and Denise Whittle and myself. Pray also for those responsible for choosing a mentor to help and guide us.

November is a month of chilly winds, ever present dampness and longer nights

but also of the golden browns of the beautifully descending leaves. It is a time when we need to see the positives and delight in them. Within our community there is much to celebrate too as we see both halls increasingly used and a great deal of new activity - Ansley Little Angels (Parent and Toddlers), Community Cafe and Bingo in the Village Hall and plans for Gentle Keep Fit, Indoor Bowls and Bingo at St. John's. Most of all let us celebrate that in good times and in bad, God is there to help us through, bringing light within the darkness and hope in the depth of pain.

May your November be full of joy and beauty and may God's strength and love uphold you.

Your friend and vicar,

Peter

St John's Hall Ansley Common.

Wednesday 3 rd	9.00 a.m.	Holy Communion
Sunday 7 th	10.30 a.m.	3 to Advent Family Worship & Sunday School
Sunday 14 th	10.30 a.m.	Remembrance Remembrance Service
Wednesday 17 th	9.00 a.m.	Morning Prayer
Sunday 21 st	10.30 a.m.	Christ the King Family Service
Sunday 28 th	10.30 a.m.	Advent. Holy Communion & Sunday School

St. Laurence's Church Sunday services

Nov. 7 th	3 rd before	10.30 a.m. All Age Worship
	Advent	6.30 p.m. B.C.P. Holy Communion
Nov. 14 th	Remembrance	10.30 a.m. Remembrance Service
	Day	6.30 p.m. Evensong
Nov. 21 st	Christ the	10.30 a.m. All Age Worship
	King	6.30 p.m. Holy Communion
Nov. 28 th	Advent Sunday	10.30 a.m. Holy Communion
		6.30 p.m. Evensong

Other events

Every Monday	7.00 p.m.	Links Youth Club
Monday 8 th	7.00 p.m.	Prize Bingo St. John's Hall
Monday 1 st 15 th & 29 th	2.30 p.m.	Prayer Group meet 10 Nuthurst Crescent.
Tuesday 16 th	10.00 a.m.	Morning Prayer Village Church Hall
Every Wednesday	10.30 – 1.00 p.m.	Community Café Village Church Hall
Wednesday 10 th & 24 th	7.30 p.m.	Wednesday Fellowship meet 10 Nuthurst Cres.
Thursday 11 th & 25 th	7.30 p.m.	Ansley Common Fellowship.
Thursday 18 th	7.30 p.m.	Spurgeon Coffee evening (see below)
Thursday 25 th	7.30 p.m.	P.C.C. Meeting Village Church Hall
Friday 3 rd Dec.	7.30 p.m.	Christmas Fayre Village Church Hall

From the Registers

Wedding

The wedding of Daniel Dutton and Julie Shore took place on September 18th. Although the weather was heavy showers that day while coming to and going from Church it was dry. We wish them every happiness in their future life together.

The P.C.C. wish to thank the family and friends of Mrs Toon who have given in her memory.

Church Car Park

It is with much regret that we have to report again that there have been further problems in the car park over recent months. One car had the window smashed and a handbag stolen. And a further had the locking mechanism damaged. Please -

- Be **vigilant**: - Do not leave anything of value on show,
- **report** any incident as soon as possible to the wardens and the police if appropriate.

Harvest

The Church looked really full of abundance to show God's bounty towards us. Many thanks to everyone who came or gave to make this so. The Sunday services both at St. Laurence and St. John's had a wonderful feel of thanksgiving, and made the celebrations appropriate and enjoyable. As one or two people had been unable to attend one of the Holy Communion services earlier in the day it was decided to have a shortened Communion after Evensong. It was to everyone's surprise that 17 people

stayed to that service, we need to consider if we offer this on a regular basis at Harvest time.

There was £138 made at the Harvest sale, which was wonderful considering only a few people attended. Perhaps we need to reconsider this part of the harvest celebrations as well.

The Harvest Supper was entertaining and the good food was enjoyed by all that came. Thank you to those who organised the event and to the entertainers Doreen Harvey and Philip and Janet Alsop. There was a surplus of £92 for Church funds.

Jumble sale

St. John's Jumble sale on 18th September raised £236 for the hall funds this was a wonderful effort. Thank you to everyone who gave the jumble, there was some bargains to be found, to those who sorted and sold, and also to those who came and bought.

Prize Bingo

There will be a Prize Bingo in aid of hall fund at St. John's Church Hall at 7 p.m. on Monday 8th. All the prizes have been donated and it will be a good evening.

St. John's

We have been successful in our application and have been awarded £2600 by Warwickshire County Council Community Development Fund. This will be used to provide storage for the various hall users. This money together with the £5000 awarded by the Coal field regeneration fund, and the funds raised by all the hard work of the people at Ansley Common means that we have nearly enough funds to carry out the work. If all goes to plan, work on the new kitchen and the storage, together with a new central heating system will commence early in the new year.

Remembrance day

This year remembrance day is the 14th and there will be a special service at St. Laurence's. We will remember those who mourn and those who have, and still suffer as a result of war. The wreaths will be laid at the parish war memorial and the two minutes silence will be observed.

There will also be a special service at St. Johns.

The Ministry Leadership Team

The Ministry Leadership Team has been elected and Ansley's representatives are Marcia Sutton, Moreen Freestone, David Cove and Mandy Watts. They were commissioned on Sunday 31st October at St. Michael's. Please pray for them.

Spurgeon Child Care

Please come along on Thursday November 18th at 7.30 p.m. to 33 Nuthurst Crescent. Enjoy light refreshments and a chat and help raise funds for Spurgeon Child Care. This is a children's charity that raises funds to help support children in Britain less fortunate than our own.

There will be a bring and buy stall and please bring any collection boxes you may have.

Thank you, for your continued support. Margaret Oliver 024 7639 5674.

Christmas Fayre

Advanced notice, as this is being held on Friday 3rd December please book this evening now further details in December magazine.;

2005 Calendars

These are now available. They depict pictures from various flower festivals of the past 40 years and are £4 each.

November, 2004.

ANSLEY PARISH COUNCIL: Traffic Calming - progress being made with W.C.C. who are in process of completing traffic counts and looking at various options available to Parish.

Warwickshire Car Clear: New free hotline for reporting abandoned cars 0800 1699900

Adult Education - free computer learning classes currently underway at Ridge Lane. If you want to learn how to use a computer contact Community Education for North Warwicks on 01827 718007 for more information.

Footpaths: Thanks to work of Footpath group, the footpath from Croft Mead to Tunnel road re-established for use and also footpath from Chip Shop on Birmingham Road to the golf course re-established with kissing gates installed

Christmas Post: Last posting 2nd class Saturday 18th Dec. 1st class Tuesday 21st Dec. Next meetings: 11th November. 9th December.

While doing Pickle Onions I thought the onions were not as firm as usual and this not only applied to home pickled onions but also to well known brand bought ones. I did notice, however, that there was a mark on every onion, and presume this was because they are picked by machine. I thought perhaps Mrs. Beaton's cookery book would give me a better method but what a shock! One instruction tells you to use a Silver knife to cut the onion skins, not a steel one - that's my first mistake. Then when they are in the jars it tells you to 'tie down the bladder' - my second mistake, but do you know what a bladder is? Yes, exactly what you think and there's not many of those about today. Oh well, a good try but I shall just have to stick to the 'Good Housekeeping' book I have always used.

October was a very mixed up month this year in the garden. We had Poached Egg Plant, Lilac, Nasturtiums and Cowslips all flowering amid the Autumn flowers and the falling leaves. The birds also must have been confused as Bees and Butterflies were still busy in the garden, although it was quite chilly and there were also a few blossoms on the Forsythia. What a strange Autumn, but it did keep the gardens very colourful.

However, the trees were laden with nuts, conkers, acorns and the Rowan Trees had huge bunches of berries, with the Holly so colourful, so at least the trees know what time of year it is. This made me recall when as young children we picked nuts at this time of year. Although we could never find any Hazel Nuts we loved Beech Nuts. We found lots of these when we went to church at Hartshill but I think we were in competition with the squirrels as many were empty. Then there were Pig Nuts which were very difficult to find as we dug and dug beneath plants that looked like Cow Parsley. They were tasty but elusive, and we just rubbed off the earth and ate them. Can you imagine the horror today, but they never seemed to do us any harm. Perhaps we had very strong constitutions in those days.

Marie Cove.