

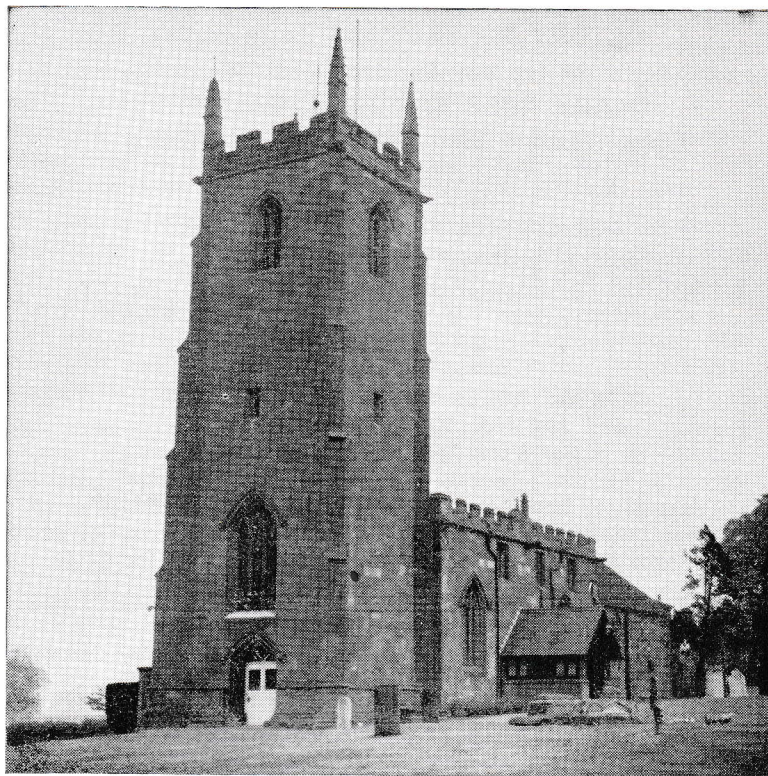
Church of St. Laurence Magazine

Parish including Birchley Heath, Ansley Common,
Ansley Village, Church End.

No. 821

NOVEMBER 1993

Price 13p



Vicar:

Reverend JAMES R. JASPER

Honorary Church Army Evangelist:

Mrs. CATHERINE A. JASPER

The Vicarage, Ansley Village, Nuneaton CV10 9PS

Telephone: Chapel End 396403

Sunday Bus Timetable for 6.30 p.m. Evening Service

Ansley Village turn 6.00 p.m.

Ansley Common St, John's 6.20 p.m.

Return Journey from Parish Church 7.45 p.m.

Newdegate Printers, Nuneaton — Tel.: (0203) 382902

Ansley Vicarage,
November 1st, 1993

Our Dear Friends,

It was a good day when, at the July Church Council meeting, David Morley offered himself to look into the possibility of commencing a Youth Club in Ansley Village.

At the September Church Council meeting a report of the investigation resulted in the Church's approval to go ahead with forming a Youth Club affiliated to St. Laurence Church and the Warwickshire County Council Community Education Services.

The Club commenced last month under the leadership of an elected member together with a group of willing helpers, backed up by a management committee under the chairmanship of David Cove.

To them and all those in the village who have, behind the scenes, cared enough to give themselves to the task; we are more than grateful. Let us all make it our prayer that God will prosper the club and then a good work will be done.

All in a mess! is how Jesus understood our relationships with one another and with God to be. He knows how we hurt one another. He taught that it was from the heart that come evil desires,

This simple but profound analysis of the heart of the world's problems have helped several well-known atheists to become Christians. There is an old saying: 'The man who sets out to change society is an optimist; but the man who sets out to change society without changing the individual is a lunatic.'

On Remembrance Day we shall, from Church, gather round the War Memorial to remember, with the rest of the Nation, the men who have worked for peace, planned for peace, talked for peace, fought for peace, died for peace. All the ways known to man to bring 'peace on earth.' But what has happened? Only twenty-one years after World War 1 came another war. Millions have died and continue to die as a result of violence and conflict. Man does not know the way to peace, as the Bible accurately concludes.

Walter Lippman, a convinced humanist, commented after the last War: "We were so sure that the generation had arisen, keen and eager, to put this disorderly earth to right, and fit to do it. We meant so well, we tried so hard, and look what we have made of it. We can only muddle into muddle. What is required is a new kind of man."

Jesus claimed to have the power to change the very heart of man; and thereby turn our selfishness into service, our hate into forgiveness, our violence into compassion, our greed into generosity, our pride into humility, our lust into love. He wants to fill our cold, critical and often lonely hearts with Himself.

James, Catherine, Mark and Rebekah.

DIARY FOR NOVEMBER

Monday, November 1st

7.45 p.m. Christmas Fayre Working Party.

Tuesday, November 2nd

3.00 p.m. Mother's Union.

Saturday, November 6th

6.30 p.m. Bonfire Barbecue. St. Wilfrid's, Old Arley.

Sunday, November 7th

8.00 a.m. Holy Communion.

10.30 a.m. Family Communion.

6.30 p.m. Evening Prayer. 1662 Prayer Book.

Monday, November 8th

7.45 p.m. Parochial Church Council Meeting, Ansley Village Church Hall.

Wednesday, November 10th

7.45 p.m. Ley Group Council, Upper Room, Old Arley.

Sunday, November 14th — Remembrance Day

10.30 a.m. Remembrance Service.

6.30 p.m. Evening Prayer.

Wednesday, November 17th

7.30 p.m. Men's Supper. Upper Room, Old Arley.

8.00 p.m. Wednesday Fellowship at the Vicarage.

Sunday, November 21st

10.30 a.m. Family Service.

6.30 p.m. Parish Communion.

Monday, November 22nd

7.30 p.m. Children's Society Box Opening.

Wednesday, November 24th

8.00 p.m. Ansley Ladies.

Sunday, November 28th

10.00 a.m. Family Service at St. John's, Ansley Common.

10.30 a.m. Family Communion.

6.30 p.m. Evening Prayer. A.S.B.

Meeting for Prayer in Church every Friday at 6.45 p.m.

FROM THE PARISH REGISTERS

Baptisms Pray that the parents of these children be given the Spirit of Wisdom and Love, that their homes may reflect the joy of God's Eternal Kingdom.

Oct. 3—Lewis Richard Hughes of Birmingham Road, Ansley Village.

Oct. 3—Sheila Nicole Smith of Bretts Hall, Ansley Common.

Holy Matrimony Pray that their home may be a place of love, security and truth.

Oct. 9—John George Harris of Birchley Heath to Gail Denise Hall of Birchley Heath.

Burial "Though I walk through the valley of the shadow of death."

Oct. 14—Kate Elizabeth Yardley, 89 years of Atherstone.

Mrs. Kate Elizabeth Yardley lived at Church End until 1943 when the family moved to Baxterley and latterly to Atherstone. She loved Ansley Church where she had many friends and always returned here on special festivals. Her warm personality will certainly be missed. She died two weeks short of her 90th birthday. The funeral was at St. Mary's, Atherstone and her ashes are buried here in the family grave.

Congratulations to Graham Sutton in winning first prize in the Reversible Ploughing Championships at the National Competitions held in October by the National Young Farmers.

The Church was well decorated with Harvest produce for last month's Harvest Festival. Many visitors at both Sunday Services, together with those the previous day for the Wedding, expressed appreciation. Very many thanks to all who gave produce and helped decorate the Church. It was amongst the best seen in recent years. An enjoyable evening was spent by about 40 people the following night at the Harvest Sale. Thank you to Stan Forryan who did a good job auctioning the produce. Also to Marcia Sutton who received £135 for the General Fund, and to all the ladies who provided the welcome refreshments.

Children and parents of St. John's, Ansley Common also enjoyed a special Harvest Service on the following Thursday. Warmest appreciation was expressed to Judith Wilson and Marie Cove for their constant good work at the Weekly Explorers.

Ansley Mothers' Union meet at Ansley Church Hall on Tuesday, November 2nd at 3.00 p.m. New members would be most welcome.

W. Ponder

Ansley Ladies meet on November 10th in Ansley Church Hall at 8.00 p.m. Demonstration showing us how to make Swiss Lace. November 24th speaker to be arranged.

W. Ponder

From the income of this year's **Flower Festival** we are sending £300 to the Nuneaton Hospitals League of Friends. Our Church has chosen to make a donation to this Charity for many years and it is encouraging to know that many patients from near and far have been able to benefit in a wide variety of ways.

The Christmas Fayre will be at 3.00 p.m., on Saturday, December 11th. Offers of help and a wide selection of good ideas will be most welcome. Please bring your ideas to the planning meeting on Monday, November 1st, 7.45 p.m., at the Church Hall. Amongst the items being planned is the Christmas wreath; prices varying from £4 to £6.50. Place your orders by telephone 0676 40298 and 0827 874520 or at Church.

On Saturday, November 6th we are invited to a Bonfire Night at the car park at St. Wilfrid's, Old Arley, 6.30 p.m. The charge is 50p. Parents and children will be very welcome to this family occasion.

We will remember in our prayers those from our parish who have been confirmed at our evening service on October 31st. They are Sue Pearson from Ansley Common, Rosie Harris from Birchley Heath

and David Bailey from Ansley Village. We welcome them into the Christian fellowship and trust that as they grow in years they may grow in faith and trust in Jesus and always be a witness for Him.

CHILDREN'S SOCIETY COFFEE EVENING & BOX OPENING

Please come and join us for coffee and cakes on Monday, November 22nd at 7.30 p.m., at my house. There will be a Bring and Buy. Everyone is very welcome even if you do not hold a Children's Society box,

Margaret Oliver,

33 Nuthurst Crescent, Ansley Village

Tel.: 395674

What is Christian Viewpoint? Christian Viewpoint is interdenominational and welcomes to their meetings people of every background in order to share with them something of the Good News of God's love expressed supremely in Jesus.

The women of the Ley Group have affiliated to this organisation. Their first meeting is entitled 'The Spirit of Christmas' and ladies are warmly invited to an evening of flowers and music for Christmas in Ansley Village Church Hall on Friday, 3rd December, 7.15 for 7.30 p.m. The speakers will be John & Bett Wareham and their 1½ hour presentation will be followed by coffee and mince pies. The cost of the evening is £1.50. A limited number of tickets will be on sale soon. The flower arrangements made by them during the evening will be on sale afterwards.

Barbara Batts.

Did you know that on January 1st, 1893 the first Ansley Parish Church Magazine was produced by the Rev. Charles Heaton. It sold for one penny. One hundred copies per month were printed and by the end of the first year it had made a loss of £9 10s 6d. So on January 1st, 1894 the price was raised to three half pennies. Payment in advance was requested, that being one shilling and sixpence.

Now, one hundred years on, 400 copies are produced and that also at a loss. So our Church Council has decided that from January 1994 the cost of the magazine will be 20p per copy which is cheaper than the original, when one takes account of the considerable change in the value of money. If you can pay in advance that would be appreciated. £2.20 for the year and you get one copy free. Should there be an item that you would like to put in the magazine do write it out and hand it to me at Church, or bring it or post it to the Vicarage by the 14th of the month. In the limited space available bits and pieces of news will be welcome.

At the George Eliot Hospital a new Chapel is being built. Gifts of money to help furnish the Chapel are being received. If you would like to make a gift send it to the hospital care of the Chaplain. A list of items sought for are available, for instance, a chair costs £60.

Our Church Diary for 1994 is now on sale price 50p. At Birchley Heath Post Office; Mrs. Jean Wakeford-Davy, 170 Ansley Common; and on the literature table in Church.