

# Church of St. Laurence Magazine

Parish including Birchley Heath, Ansley Common  
Ansley Village, Church End

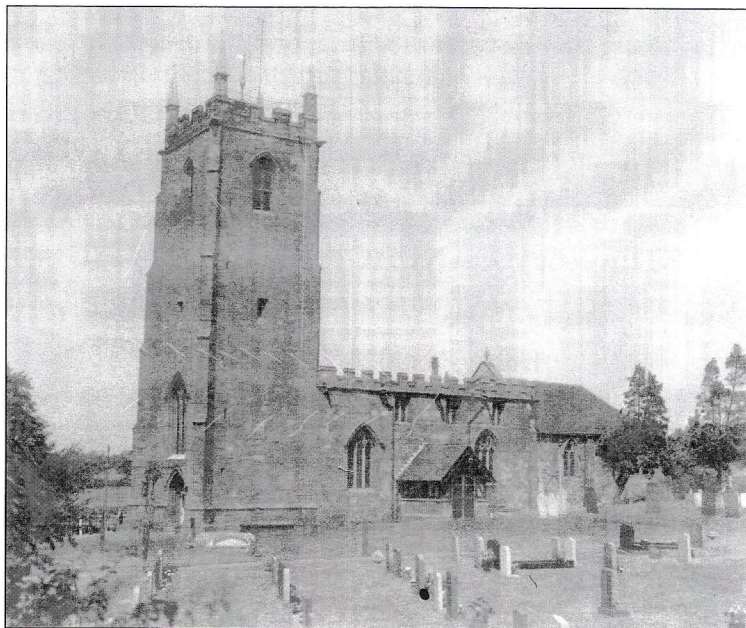
---

No: 1051

SEPTEMBER 2013

Price 30p

---



Vicar:

REV. PETER ALLAN

Tel: 024 7639 9070

Wardens:

MARGARET ANTILL

Tel: 01827 874520

MOREEN FREESTONE

Tel: 024 7638 1833

St. Johns Leaders

MARIE COVE

Tel: 024 7639 4114

JOHN COX

Tel: 024 7639 4802

Lay Reader:

MANDY WATTS

Tel: 024 7639 7654

GWYNETH HICKMAN

Tel: 024 7639 8901

**[www.ansleychurch.org](http://www.ansleychurch.org)**

---

**Print Centre 024 7638 6017**

## 10 YEARS ON!

It doesn't seem like ten years since we moved to Ansley. By the time you read this, it will be ten years since my licensing. And what a special service that was! I can remember applying quite unaware that this particular application would be the one that would succeed and thus would begin a completely new stage in my life and ministry.

Then there was the first visit - undercover it seemed so that I would not meet any of the selection panel. So Robin and I met Marcia at Ansley and Annette at Arley. After I had been offered and accepted the job we decided we just had to show Tom so we came up. We met Mandy outside the Post Office. "Were you offered the job?" she asked. No-one was supposed to know. I felt like lying. "Most certainly not. I am just showing my son where we would have come had I been successful." It didn't feel very convincing and any rate Christians are not meant to lie so I said "Yes" and swore Mandy to secrecy.

At long last the great day arrived and - precisely one week after the dedication of the annexe - I was licensed to my new job.

Looking back there have been sadnesses and disappointments but also so much to celebrate. What do you most celebrate in these past ten years - in your own life, in the lives of family and friends, in the life of the Church? Sometime we could dig up the parish profile that was made to describe the parishes and their hopes and fears for the future and see how we have got on.

But reflecting isn't just looking back. All parishes throughout the Diocese have been asked to reflect on their strengths and weaknesses. What is special about the recommended approach is that we are being clearly guided to a greater understanding of those needs by a carefully prepared questionnaire that has been already used to great effect in many churches. Through the results we shall be led to concentrate on one aspect of church life that is not as good as the others and work prayerfully to make it as good as the rest. I am keen to promote and encourage a way of thinking that can help our church as it has helped many churches in villages, towns and cities in England and around the world.

We shall be starting this reflection with the St. Laurence's morning congregation. My hope and prayer is that through this God will deepen our relationships with each other and with Him and so draw others into the warmth of His love. We shall focus on this at our services on September 22nd and September 29th. Please make a special point of being there. The evening congregation and St. John's will get their chance later!

Let us welcome the autumn with faith and confidence in our glorious God,

Your friend and Vicar,

Peter

### September St. Laurence's Church Services

Sunday 1 <sup>st</sup>	Trinity 14	10.30 a.m.	Morning Worship
		6.30 p.m.	Holy Communion
Sunday 8 <sup>th</sup>	Trinity 15	10.30 a.m.	Holy Communion
		6.30 p.m.	Evensong
Sunday 15 <sup>th</sup>	Trinity 16	10.30 a.m.	Morning Prayer
		6.30 p.m.	Holy Communion
Sunday 22 <sup>nd</sup>	Trinity 17	10.30 a.m.	Holy Communion
		6.30 p.m.	Evensong
Sunday 29 <sup>th</sup>	Trinity 18	10.30 p.m.	Holy Communion
		6.30 p.m.	Evensong

### St John's Church Hall Ansley Common Services

Sunday 1 <sup>st</sup>	Trinity 14	10.30 a.m.	Family Service
Sunday 8 <sup>th</sup>	Harvest	10.30 a.m.	Harvest Holy Communion
Sunday 15 <sup>th</sup>	Trinity 16	10.30 a.m.	Family Service
Sunday 22 <sup>nd</sup>	Trinity 17	10.30 a.m.	Holy Communion
Sunday 29 <sup>th</sup>	Trinity 18	10.30 a.m.	Songs of Praise

### Discussion Group

Fellowship Group – Tuesday, 10<sup>th</sup> September, 7 p.m. in St John's Church Hall.

### From the Registers

On Sunday 14<sup>th</sup> July we celebrated at St. John's the baptism of Caroline Louise Day. It was a very special privilege to baptise a young adult who has made for herself a definite commitment to follow Jesus. It was a wonderful celebration of faith, hope and love.

On Friday 9<sup>th</sup> August we joyfully celebrated at St Laurence's the wedding of Phillip Russell and Jenna Louise Martin.

### St John's Harvest Festival and Ploughman's Supper

The harvest service of Holy Communion will be on 8<sup>th</sup> September at 10.30a.m. A Ploughman's Supper has been organised for Friday 6<sup>th</sup> September. Tickets cost £3.00. Please book for this event.

### Day of Prayer

This will take place on Tuesday 17<sup>th</sup> September. We are invited to spend some time at St Laurence's church to pray for ourselves, our church and our community. People may come and go as suits them through the day. The day will begin at 11.00a.m. and close at 7.15p.m., when the church bells will be rung.

The focus of the day will be on the Diocesan initiative of growing healthy churches through worshipping God, transforming communities and making new disciples. We are being asked to reflect on the eight essential qualities of healthy churches, to recognise which are our strengths and to choose one quality which we can develop further.



The diocese is guiding us through this process, with St Laurence's morning congregation completing a survey which will be analysed to identify which quality we should aim to improve.(see Peter's editorial) Please take time to think and pray about this.

The eight essential qualities have been identified as,

1. Empowering Leadership
2. Gift-based Ministry
3. Passionate Spirituality
4. Functional Structures
5. Inspiring Worship
6. Holistic Small Groups
7. Need-oriented Outreach
8. Loving Relationships

These have come from research across the world, undertaken by Christian Schwarz who used the phrase Natural Church Development and has published a book entitled, "Colour your world with natural church development", which is available from the Diocesan Office.(£13.50

### Ride & Stride and Church Open Day

On Saturday 14<sup>th</sup> September people are invited to cycle, ride a horses or walk between Warwickshire churches to raise funds for the Historic Churches Trust. Mr Philip Rees is expecting to take part as our Parish Champion and he is hoping others will join him. The money raised by each cyclist will be divided equally between the named church (St Laurence) and the County Trust. The trust helps to provide funds to keep churches in a good state of repair. If you do not wish to ride please consider sponsoring Phil, there will be sponsor forms at the church. Last year Phil raised a total of £139 of which Ansley received £69.50 for the fabric fund.

If you are thinking of taking part full details are on the Historic Church's Trust web page [http://www.warwickshirechurches.org.uk/ride\\_stride.html](http://www.warwickshirechurches.org.uk/ride_stride.html) They will also provide you with a recommended route(s) of differing lengths for the area.

St Laurence's church will be open to visitors from 10.00 a.m. to 6.00 p.m. on that Saturday to welcome participants from the area as well as other visitors. Light refreshments will be served. Please contact a churchwarden if you can give an hour or two of your time on this day.

### St John's Tea and Cake Afternoon

A relaxing time was spent in chatting to friends, browsing the stalls and enjoying the delicious refreshments. £160 was raised for the hall. Thank you to all who contributed to the success of the afternoon.

### Flower Festival

At the time of writing – the Monday before the opening there seems so much to do, but because of the nature of the project we have to wait. We must all hope at this stage everything will fall into place and pray that, as in the past 48 years, God will

The diocese is guiding us through this process, with St Laurence's morning congregation completing a survey which will be analysed to identify which quality we should aim to improve. (see Peter's editorial) Please take time to think and pray about this.

The eight essential qualities have been identified as,

1. Empowering Leadership
2. Gift-based Ministry
3. Passionate Spirituality
4. Functional Structures
5. Inspiring Worship
6. Holistic Small Groups
7. Need-oriented Outreach
8. Loving Relationships

These have come from research across the world, undertaken by Christian Schwarz who used the phrase Natural Church Development and has published a book entitled, "Colour your world with natural church development", which is available from the Diocesan Office. (£13.50)

### Ride & Stride and Church Open Day

On Saturday 14<sup>th</sup> September people are invited to cycle, ride a horses or walk between Warwickshire churches to raise funds for the Historic Churches Trust. Mr Philip Rees is expecting to take part as our Parish Champion and he is hoping others will join him. The money raised by each cyclist will be divided equally between the named church (St Laurence) and the County Trust. The trust helps to provide funds to keep churches in a good state of repair. If you do not wish to ride please consider sponsoring Phil, there will be sponsor forms at the church. Last year Phil raised a total of £139 of which Ansley received £69.50 for the fabric fund.

If you are thinking of taking part full details are on the Historic Church's Trust web page [http://www.warwickshirechurches.org.uk/ride\\_stride.html](http://www.warwickshirechurches.org.uk/ride_stride.html) They will also provide you with a recommended route(s) of differing lengths for the area.

St Laurence's church will be open to visitors from 10.00 a.m. to 6.00 p.m. on that Saturday to welcome participants from the area as well as other visitors. Light refreshments will be served. Please contact a churchwarden if you can give an hour or two of your time on this day.

### St John's Tea and Cake Afternoon

A relaxing time was spent in chatting to friends, browsing the stalls and enjoying the delicious refreshments. £160 was raised for the hall. Thank you to all who contributed to the success of the afternoon.

### Flower Festival

At the time of writing – the Monday before the opening there seems so much to do, but because of the nature of the project we have to wait. We must all hope at this stage everything will fall into place and pray that, as in the past 48 years, God will

What a difference the Sun makes. After a long, hard winter, and a cold, wet Spring, the seeds wouldn't grow. Then the Sun came out – young birds appeared, flowers and trees burst into life, and just to make it perfect we had some heavy showers for refreshment. The gardens were full of Bees and Butterflies – the fruit and vegetables grew in abundance; gone were the winter blues – all down to the glorious Sun.

I have been engrossed in a book called 'Trees & Shrubs of Britain'. It may not sound very interesting with just trees, leaves and seeds, but it is fascinating as many of the trees have played a great part in the social and commercial history of Britain. The Common Lime which grows by St. John's Hall can live for 500 years. The bark was once used to make mats and ropes and the flowers provide a source of nectar for the Honey Bees in July. Lime Wood is light and fine grained and has been used for wood carvings and for the making of musical instruments. Trees of many kinds have had lots of uses, from the mighty Oak from which huge ships were built to the Elder, the stems of which generations of children hollowed out to make whistles and pea shooters. So, all in all, the book on trees is crammed full of knowledge.

We have all in our early years sang 'Here we go round the Mulberry Bush', and as with many nursery rhymes there are explanations for this. One of the explanations is that at one time in prison exercise yards Mulberry was planted, and the rhyme was said to have originated from the daily exercise round the tree.

Have you noticed how complicated shopping has become? It used to be so simple – if you bought Shredded Wheat, that was what it was, but now you have to be very careful and look for 'Original' on the packet, or you will find you have nuts, fruit and all sorts in the cereal, which I did. It can't be easy for people with poor eyesight as the packets are nearly the same.

Just a couple of lines from an article called 'Eating in the 50's'. "A takeaway was a mathematical problem." "A pizza was something to do with a leaning tower." "Water came out of the tap, if someone had suggested bottling it and charging more than petrol for it, they would have been a laughing stock" "The one thing that we never ever had on our table in the fifties – elbows".

'Great is the sun and wide he goes. Through empty heaven with repose: And in the blue and glowing days more thick than rain he showers the ray.

Above the hills, along the blue, round the bright air with footing true. To please the child, to paint the rose, the gardener of the World, he goes.' (from a Child's Garden of Verses by Robert Louis Stevenson.)

Marie Cove.