

# Church of St. Laurence Magazine

Parish including Birchley Heath, Ansley Common  
Ansley Village, Church End

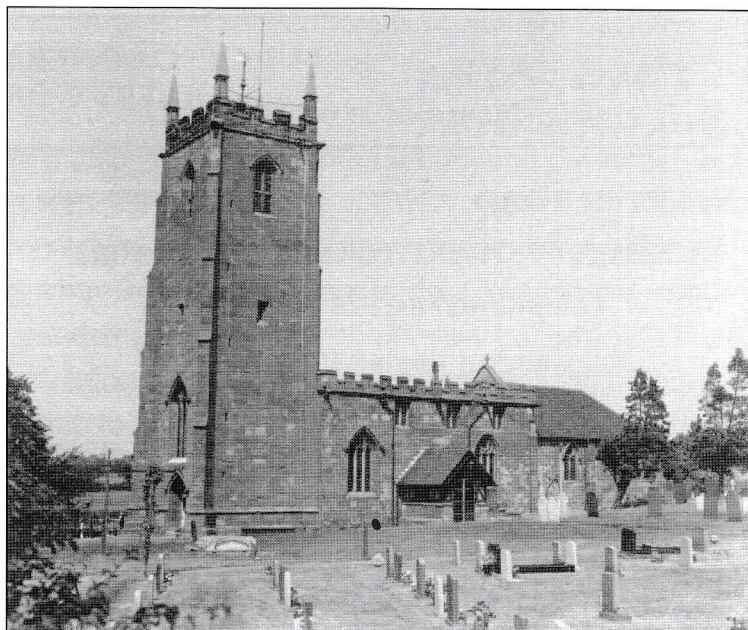
---

No: 1007

SEPTEMBER 2009

Price 25p

---



Vicar:

REV. PETER ALLAN

Tel: 024 7639 9070

Wardens:

MARGARET ANTILL  
MOREEN FREESTONE

Tel: 01827 874520  
Tel: 024 7638 1833

St. Johns Leaders

DAVID & MARIE COVE

Tel: 024 7639 4114

Lay Reader:

MANDY WATTS  
GWYNETH HICKMAN

Tel: 024 7639 7654  
Tel: 024 7639 8901

[www.ansleychurch.org](http://www.ansleychurch.org)

---

Print Centre 0800 389 4089

Can you feed 5,000 people?

We've been looking at St. John's Gospel these past two weeks at our services and it seems so appropriate!

With a boy's packed lunch of 5 loaves and two fish Jesus fed 5,000. He didn't feed them using fresh air. He didn't make something out of nothing. He took the packed lunch and multiplied it 5,000 times over.

As we prepare to celebrate the reopening of St. John's Hall, I would like to thank all those ( too numerous to mention) who have given their time, energy, money and talents. Jesus has taken what they have given and used it to produce such a wonderful result. Thank you Jesus for multiplying our contribution beyond our hopes and dreams!

The day after the people were fed they came back for more! But not just for something to eat! They wanted to know what they should do to be doing what God wanted them to do. ( Yes I know it sounds clumsy but doing the right thing was very important to them.)

The funny thing is Jesus didn't answer with a list of things to do. He asked people to believe in Him. No list of things to do, no requirement to do things better but simply believe.

So it's great we are doing things. It's wonderful so many people are helping but most of all we must remember that there is something more wonderful still - trusting in Jesus. Trusting and encouraging others to trust. That's our job. And it works. The renewed St. John's Hall proves it!

Looking forward to seeing you all at the celebrations on September 27. And no we won't be feeding 5,000 people but there will be lunch and we shall have a really great time!

Your friend and Vicar,

Peter

### September, St. Laurence's Church – Services

Sunday 6 <sup>th</sup>	Trinity 13	10.30 a.m.	Morning Worship
		4.00 p.m.	Family Service in Village Church Hall
		6.30 p.m.	Holy Communion
Sunday 13 <sup>th</sup>	Trinity 14	10.30 a.m.	Holy Communion
		6.30 p.m.	Evensong
Sunday 20 <sup>th</sup>	Trinity 15	10.30 a.m.	Morning Prayer
		6.30 p.m.	Holy Communion
Sunday 27 <sup>th</sup>	Trinity 16	10.30 a.m.	At St. John's No service at Laurence
		6.30 p.m.	At St. John's No service at Laurence

### St John's Church Hall Ansley Common Services

Sunday 6 <sup>th</sup>	Trinity 13	10.30 a.m.	Family Service
Sunday 13 <sup>th</sup>	Harvest Festival	10.30 a.m.	Holy Communion
Sunday 20 <sup>th</sup>	Trinity 15	10.30 a.m.	Family Service
Sunday 27 <sup>th</sup>	CELEBRATION	10.30 a.m.	Special Service
		6.30 a.m.	Holy Communion
			BOTH Joint with St. Laurence

### Other regular activities

Full details on the notice boards.

### From the Registers

#### Weddings

It was a lovely day when Nigel Cooke and Michelle Loughran married on 25<sup>th</sup> July they are regular members of our 6.30p.m. congregation and we wish them every happiness.

On August 8<sup>th</sup> a sunny day Philip Taylor married Susan Ensor. The church looked beautiful with the floral arrangements that her aunt and family had arranged. The lovely service being conducted by Rev. Paul Messan of Bulkington

#### Funeral

The funeral of Yvonne Bray took place at St. Laurence's on 22 July followed by burial in the churchyard. Thus she returned to the village she loved, where she had attended school and spent most of her life. Always finding fun and laughter in the ordinary things of life and making her own inimitable mark wherever she went, Yvonne's blend of courage and humour brought love, joy and inspiration to many. Her premature passing is a source of deep grief and sorrow to her partner Scott, her children, all her family and her many friends. She will be greatly missed.

### The Phoenix of St. John's Church Hall Ansley Common

The long awaited work on the exciting project to revamp St John's Church Hall in Ansley Common started on Wednesday 25th February 2009.

The project has seen the hall transformed into a centre for use by the whole community for meetings, activities and events. The total overall cost being £176,603 and we now see the creation of a new disabled access, the building of toilet block, the new roof, and repairs to the render. The hall's insulation has also been updated and the outside area improved.

Those of you in Ansley Common will remember the questionnaires in 2004, and it is many thanks to all the residents who completed these as it was on the strength of its results that in



2005 the funding was sought and a new kitchen fitted which enabled the Krazy Kettle Kafé to start, with it growing to be able to provide breakfasts for many each week. The slowly improving hall also attracted more usage that also highlighted the need to improve the hall further.

The provision of an attractive building, the only community building in Ansley Common, was becoming more and more important as was the need to provide for the disabled.

The hall committee and PCC are grateful to all the agencies that have given advice and provided the funding North Warwickshire CVS, (Now part of Warwickshire CAVA) Waste Recycling Environmental (WREN), The Veolia Environmental Trust The SITA Trust. The Church & Community Fund, Warwickshire County Council Community Development Fund, Ansley Parish Council, All Church's Trust, Garfield Weston Foundation, The Alan Edward Higgs Charity, North Warwickshire Borough Council Area Forum Fund, Mercian Trust (Christmas Wish), The Krazy Kettle Kafé, The Coal Fields Regeneration Trust, The Heart of England Grass Roots Warwickshire Fund, Awards for All and our own community by their fund raising.

Ian Neale (Nuneaton) Building Contractors Ltd have carried out the work and David Bailey of Sursham Tompkins and Partners has overseen most of the project (David's mother Enid grew up in what was then known as Ansley New Buildings next to the then Co-op).

With the hall having been closed for over six months it is wonderful to have it fully operational. It is available for use by community groups and for private hire. Please contact Donna Salisbury on 024 7639 3967

The site manager says that the hall will be a credit to the community and hopes it will be well used.

A regular hall user could not wait to get back into the hall especially for the Sunday services. A neighbour said that the work had not created any problem and was pleased to see the hall so improved.

The completion of this project is being celebrated on 27 September 2009, when at 10.30 a.m. the Bishop of Coventry will be conducting a special service which will be followed by a buffet meal, a display of photographs of the 'before during and after' as well as Morris Dancing around the Common, input from the Ansley Common Youth Club and other items of entertainment including a Chinese Lion Dance, and circus skills, to which all the funders, advisors, contractors but primarily all the local people of Ansley Common who we hope will be able to take pride in a much improved facility for all the community.

Do come and enjoy activities and displays and have a look at the hall which has been totally transformed and is there for all the people of Ansley Common.

Finally a very, very big 'THANK YOU' to everyone who have worked, so hard, over so many years to bring about these improvements.

#### St John's Harvest Festival

The congregation at Ansley Common will be celebrating their Harvest Festival with a special service led by the Vicar on Sunday 13<sup>th</sup> September. This will be preceded by the Harvest Supper on Friday 11<sup>th</sup> at 7.00p.m. Please book you ticket £3.50 for a very good meal.

The hall will be decorated on Saturday ready for the celebrations and any gifts of flowers will be appreciated.

### Builders Dance

Part of the celebrations for the hall's official opening is a 'Builders' dance (Bob the builder springs to mind as 'He can Fix it'). This fancy dress dance will commence at 7 p.m. on Friday 25<sup>th</sup> September. Tickets will be £1.50. There will be a raffle. Please bring your own food and drinks.

### Group meetings

On 7<sup>th</sup> September and on 1<sup>st</sup> Monday each month anyone interested is welcome to come to the study group meetings being held in the annexe at 7.30 p.m. For the next few months we will be looking at the parables. This is a time for listening, discussing, learning and meeting together.

### Flower Festival

Full Details in October issue

### 'From tiny acorns mighty oaks do grow'.

The total paid into our Fabric Fund in July was £123.20 increasing the total to £455.50 all from the small change collection. Thank you to everyone who contributed. The jars will be in Church for the rest of the year

### Stressful Times Advice from the Arthur Rank Centre

---

#### Worried? Troubled? Stressed?

It can help to talk. We're here to listen.

Would you like specialised or local support?

We can find it.

We offer a totally confidential, non judgemental listening service guaranteeing anonymity to anyone in a rural area feeling troubled, anxious, worried, stressed or needing information. We can also provide ongoing support, if necessary, until the difficulty is resolved or other help is in place.

Rural Stress Helpline 0845 094 8286

Email: [ruralstresshelpline@rase.org.uk](mailto:ruralstresshelpline@rase.org.uk)

[www.ruralstresshelpline.co.uk](http://www.ruralstresshelpline.co.uk)

### Prayer Requests

If you would like someone or a particular situation remembered in prayer at our Sunday Services both at St. Laurence and St. John's please hand the slip below to a member of the Church Congregation or contact the Vicar on 024 7639 9070. Please remember the vicar would be pleased to visit anyone who is sick, but he does need to know, again please ring.

---

Please pray for .....who is .....



September, 2009

When you read this magazine, the Flower Festival will either be in full swing or perhaps even over for another year, and we next look forward to the Celebrations at St. John's Hall – a celebration of the 'Phoenix' project, very aptly named as we have seen the transformation of this Hall. We pray now that many of all ages will come to visit St. John's, to use the facilities for social purposes, but mainly to swell our congregation each Sunday morning.

When London staged the Olympic Games in 1948, the total cost was £600,000 and adjusting this to today's retail price index, this would be £1.6 million. A recent estimate of the 2012 Games is £9.3 billion, of which £151 million was paid in 2008 to consultants employed to keep the cost down – so this exercise to keep the cost down is costing over 10 times as much as the entire budget for the Games in 1948.

Where did all these consultants come from? We even have consultants for weddings – they are called Wedding Planners, but although they plan lavish weddings costing thousands of pounds, they don't seem to be able to plan for the marriages to last longer than the planning took. Even Stag Nights have turned into weekends or weeks and Hen Parties can cost hundreds of pounds.

I was watching a history programme about the 1970's when the lights went out and to save energy people were asked to share a bath. This was nothing new to us as children as we had no running hot water or bathroom, so every Friday we would help Mam carry in the tin bath, put it on the rug in front of the fire and fill it from the copper. Then four of us girls would take it in turn starting from the eldest, to have a bath. Mam then boiled kettles and saucepans of rain water and we each had our hair washed in Derbac soap (which was black). We all had lovely healthy hair, none of us ever had nits and we didn't catch ringworm when there was an epidemic of this. At this time also our Dad bought a Tape Recorder which besides recording, picked up every sound around, so when we were recording Donald Piers singing 'In a shady nook by a babbling brook' we had the very authentic sound of splashing water from the bath.

Do you remember when we were told 'i before e except after c' Did you know the rest of the rhyme as I didn't. 'Put i before e except after c, when sounded as 'ee'. As in neighbour and weigh, you really should try to put e before i. But leisure and seize do as they please and weird is just weird.' No wonder children find spelling very hard.

Golden Autumn now is on it's way, as nights grow long and short the day.  
The curtains now we need to draw, as long summer nights are for us no more.  
But see the trees in colours fair, see flowers of gold and bronze everywhere.  
See the woods in dapple shade, with floor of leaves and shady glade.  
Autumn is beginning, summer days are gone for sure,  
But Autumn brings her magic of sights and sounds galore.

Marie Cove.