

# Church of St. Laurence Magazine

Parish including Birchley Heath, Ansley Common  
Ansley Village, Church End

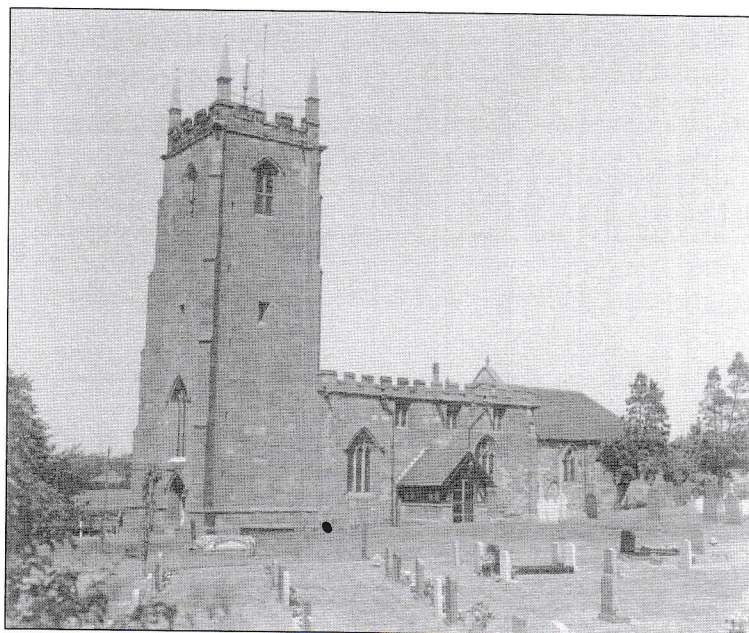
---

No: 1013

MAY 2010

Price 25p

---



Vicar:

REV. PETER ALLAN

Tel: 024 7639 9070

Wardens:

MARGARET ANTILL  
MOREEN FREESTONE

Tel: 01827 874520  
Tel: 024 7638 1833

St. Johns Leaders

DAVID & MARIE COVE

Tel: 024 7639 4114

Lay Reader:

MANDY WATTS  
GWYNETH HICKMAN

Tel: 024 7639 7654  
Tel: 024 7639 8901

**[www.ansleychurch.org](http://www.ansleychurch.org)**

---

**Print Centre 0800 389 4089**

---

## Looking Ahead

As I have shared with you before at St. Laurence's we are looking to the future.

We have so much to celebrate in the past seven years from the the opening of the Annexe, the refurbishment of Ansley Village Church Hall and the refurbishment and extension of St. John's to the establishment of weekly worship at St. John's, the start of the 4 O'Clock Club in the Village and on the Common and the introduction of the Christmas Tree Festival - to name but a few! We haven't been idle.

But God is a God who calls us forward to journey with him. Where is He taking us now?

Over the course of Lent the PCC and church members in five evenings of prayer, Bible Study and sharing began to explore where God wants us to travel next.

On the final evening, everyone was invited to write their dreams down. I then read them out and we decided how we felt about each dream.

A few dreams others did not share. A few dreams were considered helpful but not fundamentally important. That was not surprising. But overwhelmingly we are beginning to discover a common dream. It was amazing how God was at work. Of a huge range of possibilities four themes emerged.

We long to be a Church that has a strong spiritual life rooted in the love of Christ through prayer, Bible Study and sensitive reflection upon what He would want us to do.

We long to be a Church that welcomes and meets the needs of children, young people and families.

We long to be a Church that cares for those who by reason of illness or infirmity can no longer attend.

We long to be a Church that has a good social life that attracts all who live in Ansley, church members and non church members alike.

From May 23 until June 12 these themes will be the subject of the sermons at both morning and evening services.

Please join us to listen and to share your comments.

Only as we listen to God speaking through each other will we truly live and work in the image of Jesus Christ our Lord.

Continue to enjoy the wonderful season of Easter,

Your friend and Vicar,  
Peter

### May, St. Laurence's Church – Services

Sunday 2 <sup>nd</sup>	Easter 5	10.30 a.m.	Morning Worship
		6.30 p.m.	Holy Communion
Sunday 9 <sup>th</sup>	Rogation	10.30 a.m.	Holy Communion
		6.30 p.m.	Evensong
Sunday 16 <sup>th</sup>	Ascension	10.30 a.m.	All Age Worship
		6.30 p.m.	Holy Communion
Sunday 23 <sup>rd</sup>	Pentecost	10.30 a.m.	Holy Communion
		6.30 p.m.	Evensong
Sunday 30 <sup>th</sup>	Trinity	10.30 p.m.	Special Family Service
		6.30 p.m.	Evensong

### St John's Church Hall Ansley Common Services

Sunday 2 <sup>nd</sup>	Easter 5	10.30 a.m.	Morning Worship
Sunday 9 <sup>th</sup>	Rogation	10.30 a.m.	Holy Communion
Sunday 16 <sup>th</sup>	Ascension	10.30 a.m.	Morning Worship
		4.00 p.m.	4 O' Clock Club
Sunday 23 <sup>rd</sup>	Pentecost	10.30 a.m.	Holy Communion
Sunday 30 <sup>th</sup>	Trinity	10.30 a.m.	Songs of Praise

### Village Church Hall

Sunday 2 <sup>nd</sup>	Easter 5	4.00 p.m.	4 O' Clock Club
------------------------	----------	-----------	-----------------

Discussing the parables Monday 10<sup>th</sup> - 7.30 p.m. 46 Nuthurst Crescent please note the change to the second Monday because of the holidays.

### Other regular activities

Full details on the notice boards.

### From the Registers

#### Wedding

The 27<sup>th</sup> March was a lovely day and also the wedding day of Christian Thorpe and Jodie Smith. They took their vows in the presence of their invited family and friends.

#### Funerals

The funeral service of Stewart Barrs took place at St. Laurence's Church on March 30<sup>th</sup>. A packed church heard of his excellence as farmer and businessman, his love and joy in his family and his loyal commitment to his many friends. We sung hymns reflecting images of creation, of farming and the passing of the seasons and remembered the joy that so many found in Stewart's company and how much he will be sorely missed. This service was followed by interment in the churchyard.

The funeral of Jean Herbert took place at St. Laurence's Church on April 8, followed by interment in the churchyard. Jean had a tremendous sense of her responsibility as wife, mother and grandmother - a task she accomplished with great love and care and to a very high standard. As she prepared at Myton Hospice for her passing, freed from the responsibilities she had undertaken so well, remarkably her love and care blossomed even more fully. She is mourned by all her family.



### Ascension Day

This year Ascension Day which is 40 days after Easter is on Thursday 13<sup>th</sup> May and as has been done for many years we will be uniting with the Churches in Arley and Methodists also of Arley and the service will be held at 7.30 p.m. at St. Michael's, New Arley. This service will be the first joint service to be held at St. Michael's since the major work carried out on that building.

### Plant Sale

This year we will be holding our annual plant sale on Friday 21<sup>st</sup> May from 10 a.m. to 2p.m. and again on Saturday 22<sup>nd</sup> from 10 a.m. till 12 noon. We hope by the time of sale the weather will have warmed up even as this is being written the weather forecast is predicting to be down to 1°C. We hope to have a good array of bedding plants and trailers as well as cuttings and other plants available. Proceeds from this event are for the Village Church Hall funds.

The Ansley Village Allotment Association will also be having their vegetable stall. There will also be a cup of tea available and chance for a good chat.

It will be good to be able to see the summer plants ready to be bought at the sale after such a cold winter

### Apology

It has been brought to our attention that the wording last year for some of our events regarding donations had not been clear. We apologise for this and will endeavour to ensure that there is not ambiguity in future.

### Easter

Thank you to all who provided the flowers and those who decorated the church for Easter it was good to be able to celebrate our Easter festival services back in our beautiful church after the repairs of last year when the services were in the annexe.

It was the same at St. John's as last year they too were in the midst of their refurbishment.

### Annual Parochial Church Meeting

This meeting was held in the annexe on Thursday 15<sup>th</sup> April. It is at this meeting that the Church Wardens are elected for the next twelve months and members of the PCC who are elected for the next three years. This time it was necessary for someone to replace A. Richardson. The two wardens were re-elected as were two existing members, the new members of the PCC are Deborah Smith, Terry Askew, and Bill Watts. It is good to have new members as well as experienced members on the PCC as it helps ensure that we keep moving forward and we must all listen to the needs of the congregation and also the people of the parish.

The annual accounts and reports were presented at the meeting, there will be a copy in the church porch for the next six weeks or if anyone wishes to see a copy please ask one of the wardens.

The General Account showed a slightly improved position this year compared to last, but the Churchyard, and Fabric Funds both showed a deficit. The Church Hall was in surplus even after repaying £1600 off the loan to the General Account. St. John's was in a very different position as all the refurbishment had taken place in 2009 and therefore all the balance from previous years has been utilised. It should be noted that there are sufficient funds to meet the retention payments when they fall due. At the end of the year our total monetary assets

reduced by £50,000 and as with everyone the interest received from funds on deposit are very low at the moment.

Our financial situation whilst not totally desperate it should be noted "We are not fully paying our way", and list of work that is required to the church fabric particularly the windows is a cause for concern.

The Vicar and church wardens would like to express their thanks to everyone who has helped the church in any way over the years but, particularly in 2009

### Bell Ringing

It is pleasing to let you know that we have two new members of the congregation learning to ring the bells. We meet every Tuesday alternating with St. Wilfred's Old Arley.

We also ring for national events, on April 23<sup>rd</sup> we rang for St. George's Day for half and hour. It is always good to have new ringers helping especially this year as we have quite a number of couples that have asked for the bells to be rung at their wedding.

Ringling is a very enjoyable hobby and there is always something more to learn, but it does take time and safety is paramount. If anyone is interested in finding out about ringing please speak to Anthony Truelove (01676 541105) or one of the wardens.

### 'FIRST RESORT' COMES TO ARLEY!

'First Resort' supports people who have been made redundant or who are facing an uncertain future as a result of the economic downturn. 'First Resort' is run by WorkCare Coventry & Warwickshire and is funded by Warwickshire County Council's Community Development Fund. WorkCare works closely with JobCentre Plus and NextStep to ensure that participants receive up-to-date information. 'First Resort' sessions are informal and friendly, offering professional advice and information.

So, how can 'First Resort' help you? We offer 1:1 support in -

- ✓ writing CV's,
- ✓ completing Job Application forms,
- ✓ improving interview skills,
- ✓ 'signposting' to training and learning opportunities.

'First Resort' takes place at Arley & St Michael's Community Café on **most Wednesdays** between 10 am – 12.15 pm. For more information, or to book 1:1 support, please contact Kay Aldersley on 024 7636 2995 or email [kay.aldersley@btinternet.com](mailto:kay.aldersley@btinternet.com) or contact Gerry Koppenhagen – Manager on 01676 542753 or email [enquiries@arleycommunitycnetre.co.uk](mailto:enquiries@arleycommunitycnetre.co.uk)

### 'From tiny acorns mighty oaks do grow'.

The total paid into our Fabric Fund in March was £21.00, bringing the total to £77.00 so far this year all from the small change collection. Thank you to everyone who contributed.

---

### Prayer Requests

If you would like someone or a particular situation remembered in prayer at our Sunday Services both at St. Laurence and St. John's please hand the slip below to a member of the Church Congregation or contact the Vicar on 024 7639 9070. Please remember the vicar would be pleased to visit anyone who is sick, but he does need to know, again please ring.

---

Please pray for .....who is .....



Well, it happened, Spring arrived and with it the flowers and shrubs. It is as if someone turned on fairy lights on the ground. The Daffodils especially have been so numerous and beautiful, but every Spring I marvel at the vivid colours of the Azaleas, Blossom trees and Forsythia, but also the Camelias, especially as Alan Tichmarsh said these would probably be badly affected by the bad winter. The Spring flowers and shrubs have been truly amazing.

Have you ever bought something which at the time seemed to be very useful, only to put it away and never use it? When we were on holiday there was a man on the market demonstrating a fruit knife which did all sorts of wonderful things. Of course we had to buy one, but two years later it is still in the box in the kitchen drawer. We also have some items either purchased or given to us which we have no idea what they are, e.g. I have a card labelled 'Stitch Markers', but although I am an experienced knitter, have no idea how to use them.

In my Bible Notes, of all places, I laughed at some ways you know you are having a bad day. One is for a Pastor (Vicar) - when the Church changes his day off to Sunday, or he is informed that the Youth Group used steel wool sponges for a car wash.

Carrying on with my reading of old magazines, in 1917 there was the worst weather for 8 centuries (don't ask me how they knew this). Snow fell until the middle of April, which resulted in considerable delay to planting on the land and also gardens. The Vicar of Ansley at that time, who never pulled any punches, wrote "It is a cause of regret that the Archbishop of Canterbury should weakly have given his sanction for work to be done on the land on Sundays. One could wish that he had shown stronger faith and advised his people to trust in God's power to give an abundant Harvest without breaking the Lord's Commandment. " It sounds like giving your boss a good dressing down!

The first of May - called May Day, was always celebrated even when I was a child. We rehearsed the country dances, made garlands and then we had a May Queen parade, when a dray was decorated and the Queen and her Maids, along with one or two more drays were processed through Hartshill. Then back to the school where the Maypole had been erected and we all danced around this. We also sang the old songs about May. We had a lovely time, but the origin was to welcome Spring.

Marie Cove.