

# **Church of St. Laurence Magazine**

Parish including Birchley Heath, Ansley Common  
Ansley Village, Church End

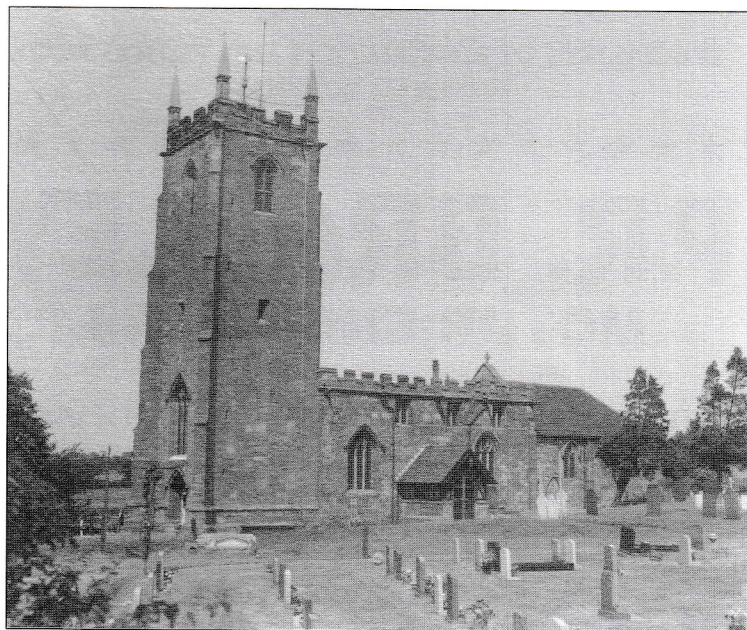
---

No: 971

MAY 2006

Price 25p

---



Vicar:

REV. PETER ALLAN

Tel: 024 7639 9070

Wardens:

MARGARET ANTILL

Tel: 01827 874520

MOREEN FREESTONE

Tel: 024 7638 1833

St. Johns Leaders

DAVID & MARIE COVE

Tel: 024 7639 4114

---

**Print Centre 0800 389 4089**

**Alleluia! Christ is Risen!**  
**He is risen indeed! Alleluia!**

Today we are in the season of Easter. The Sundays between Easter Day and the celebration of the ascension used to be called Sundays after Easter, as if we only celebrate Easter once a year. Now they are called Sundays of Easter, to remind us that we can and should continue to celebrate Easter every Sunday, but not on Sundays only but every day of the year.

It is our task as a church to speak this message. We welcome you to ALPHA. It is a friendly, non-threatening course, which assumes nothing other than a readiness to listen and a willingness to come. We don't ask for knowledge or belief - in fact those who benefit most are those willing to ask the awkward question. On the other hand, if you prefer to come and quietly listen - the choice is yours. We shall be announcing the opening session soon. Come to the meal and enjoy the time together and find out more for yourself. You are welcome. Do come without obligation.

If you want to find out more about ALPHA or anything in the life of our church then log on to our new website [www.ansleychurch.org](http://www.ansleychurch.org). There you will find details of events through the week and through the year, read articles, catch up on news and have your questions answered. You will find details of our hopes and plans. You can contact me easily through the site, perhaps with ideas for improvements. You will find out that our colour scheme changes through the year and why that happens. Our thanks are extended to Daniel Dutton for freely creating this site for the benefit of the church and all in Ansley.

Our 4pm. Sunday service for children and families in the annexe at St. Laurence is going really well. The next services are on May 7 and June 4. The service lasts just over 30 minutes and is followed by tea. Do join us.

Easter is not just a matter of words but of power. It is about making a difference. The Ley Group Young Peoples Project, serving the parishes of Ansley, Arley, Corley and Fillongley, has appointed a full-time youth worker. She will start in mid-June. In the meantime as a result of a successful bid to North Warwickshire Community Partnership, we have engaged North Warwickshire Borough Council to provide sports training for ten weeks starting Monday May 8 from 5-7 p.m. in Ansley Village and from 7-9 p.m. in Ansley Common.

And what drives the churches to provide this? Because we are here to live the joy and excitement of Easter and to demonstrate that in the end good wins.

Your friend and vicar,

Peter

## May What's On

### St. Laurence's Church

Sunday 7 <sup>th</sup>	Easter 4	10.30 a.m.	Morning Worship & Godly Play
□		4.00 p.m.	Family Service
		6.30 p.m.	Holy Communion
Sunday 14 <sup>th</sup>	Easter 5	10.30 a.m.	Holy Communion & Ministry of Healing
		6.30 p.m.	Evensong
Sunday 21 <sup>st</sup>	Easter 6	10.30 a.m.	Morning Worship & Godly Play
		4.00 p.m.	Baptism
		6.30 p.m.	Holy Communion & Ministry of Healing
Sunday 28 <sup>th</sup>	Ascension	10.30 p.m.	Holy Communion
		6.30 p.m.	Evensong

### St John's Hall Ansley Common Services

Wednesday 3 <sup>rd</sup>		9.00 a.m.	Holy Communion
Sunday 7 <sup>th</sup>	Easter 4	10.30 a.m.	Family Service & Sunday School
Sunday 14 <sup>th</sup>	Easter 5	10.30 a.m.	Holy Communion & Sunday School
Wednesday 17 <sup>th</sup>		9.00 a.m.	Morning Prayer
Sunday 21 <sup>st</sup>	Easter 6	10.30 a.m.	Family Service
Sunday 28 <sup>th</sup>	Ascension	10.30 a.m.	Holy Communion & Sunday School
Wednesday 31 <sup>st</sup>		9.00 a.m.	Holy Communion

### Other Activities at St. John's Church Hall

Mondays alternate	7.00 p.m.	Indoor Bowls
Tuesdays	9.00 – 12.00 a.m.	Krazy Kettle Kafé
Wednesdays	6.30 p.m.	A.C.Y.C.
Thursdays	9.00 – 12.00 a.m.	Krazy Kettle Kafé
Thursdays	7.00 p.m.	Youth Club
Friday 26 <sup>th</sup>	7.30 p.m.	Back to School Dance
Saturday 13 <sup>th</sup>	9.00 – 12.00 a.m.	United Church's Café

### Activities at Village Church Hall

Tuesdays	10.00 a.m.	Senior Citizens
Wednesdays	10.00 – 11.30 a.m.	Ansley's Little Angels
Wednesdays	2.00 – 4.00 p.m.	Community Café
Wednesday 3 <sup>rd</sup> & 17 <sup>th</sup>	7.30 p.m.	Bingo
Friday 19 <sup>th</sup>	10.00 – 3.00 p.m.	Plant Sale
Saturday 20 <sup>th</sup>	10.00 – 12.00 a.m.	Plant Sale

### Other Parish activities

Mondays 8 <sup>th</sup> May onwards	5.00 & 7.00p.m.	Sports activities on the recreation grounds
Thursday 25 <sup>th</sup>	7.30 p.m.	Ascension Day service Methodists Chapel Old Arley
Thursday 11 <sup>th</sup> & 25 <sup>th</sup>	7.30 p.m.	Ansley Common Fellowship
Thursday 18 <sup>th</sup>	7.30 p.m.	Archdeacon's Visitation. Wolvey
Fridays	1.00 p.m.	Art Classes at the Club

### From the Registers

Most unusually again this month there have been no entries in the registers.

### Ascension Day

Every year we unite to celebrate this festival with the congregations of the Arley Churches and the Methodists Chapel. This year it is the turn for the service to be held at the Methodist Chapel (which is opposite the Wagon Load of Lime). The service will commence at 7.30 p.m. and everyone is most welcome. If transport is a problem please contact one of the wardens.

### Archdeacon's Visitation

This annual event will take place at Wolvey Church on Thursday 18<sup>th</sup> at 7.30 p.m. It is at this service that the Churchwardens will officially take responsibility for the coming year and swear the oath of office. However this year it will be a significant service for our parish as the vicar will take the oath of office as Rural Dean for the Nuneaton Deanery for the next five years. Please remember him in your prayers as he takes on this added responsibility.

### Sports activities

From Monday 8<sup>th</sup> May for 10 weeks in place of Links there will be sports activities organised in the recreation ground in the Village commencing at 5. p.m. The leaders will then move to Ansley Common recreation ground and the activities will continue there at 7 p.m. Both sessions will last approximately 2 hours and all children and young people will be welcome.

### The Church Tower

The tower, as you may have already seen, will be shrouded in scaffolding for 8 weeks or so. The work is very weather dependant, the lime mortar will not stand frost, and high winds will make it too dangerous to work. We pray that it will progress smoothly and that there will be no unforeseen circumstances. All this work is being paid for from Church Fabric Fund, if you feel you would like to make a contribution to this fund it would be much appreciated. The cost has been tendered at £45,454 plus architect costs etc. This is provided there are no additional problems.

### Gates

We are pleased to say that the new gates from the car park to the churchyard are now in place and are a great improvement. We thank everyone who has contributed to the work and providing most of the funds for this work to be carried out.

### Plant Sale

This annual event will take place in the Village Church Hall on Friday 19<sup>th</sup> from 10 a.m. to 3 p.m. and Saturday 20<sup>th</sup> and 10 a.m. to noon. There will be all the usual bedding plants for sale and other plants that people have given. The Village Allotment Association will have their usual stall and light refreshments will be available. This is a great opportunity to stock your garden for the summer and obtain growing tips on what will look good in your garden. We would be grateful for any surplus pots and trays that you have, please bring them along so they can be used for another growing season.

### Hayes News Area

All the eight places of worship in the area that receives the Hayes News are having a United Churches weekend on 13<sup>th</sup> and 14<sup>th</sup> May. The eight places being Holy Trinity Hartshill, Hartshill Methodists, The Society of Friends, St. Peter's Galley Common, St. John's Ansley Common, The United Reformed Church Coleshill Road, St. Anne's R.C. Church Camp Hill, and St. Mary & St. John's Cedar Road. Each place is holding a different type of event. Flyers will be distributed to all homes in the area and programmes will be available at local shops etc. A quiz is being organised that necessitates visiting each building. St. John's will be having the Krazy Kettle Kafé running on the Saturday morning and the Ansley 2000 history scrapbook will be available for anyone interested. There will be a social at Holy Trinity on the Saturday evening.

### Annual General Meeting.

The full report of 2005 activities and accounts are available on the church porch notice board.

It is at this meeting, when looking back over the past year, we realise just how much has been achieved, and how much progress has been made on the different projects over the course of the year. We also look at the things that have not run so smoothly and try to improve things for the future. The reports also show just how much more we hope and pray we will achieve in 2006.

The obtaining of funding for the youth worker was a major achievement and we pray that this will enable the youth of the area to achieve and find interests rather than spend their time causing problems to both buildings and the residents of the parish.

The work at St. John's early in 2005 has greatly improved the kitchen area, and plans are now in hand for the next stage.

It is pleasing to note that most of the new groups set up following the questionnaires of 2004 are still up and running. The Krazy Kettle Kafé at St. John's has 'taken off' beyond all recognition.

It is also pleasing to note that following the vicar's series of talks on giving, the amount given by gift aid has increased by over £1800 and therefore the tax recovered has also increased accordingly. However it must be remembered that the Parish Share paid to the Diocese in 2005 was £16707 and in 2006 it will be over £18000.

We thank everyone, who has contributed to the life of the Church in the past and especially during 2005.

The Church Wardens prayer in the report continues to be that the pastoral needs are undertaken caringly and lovingly by all members, and our Prayer for Ansley continues to be that we grow in unity, mutual respect and love, and with God's help and the Rev. Peter Allan's support and guidance we will attain this.

### A message from the Isle of Lewis, Outer Hebrides

Lois & John Darley, who used to worship with us, have been settled in the Isle of Lewis for three years and are now able to offer accommodation to those who wish to get away 'from it all'. Lois will be returning to assist with the Flower Festival in August as she has done each year. It is lovely to see her each year.

### Apology

Please accept our apology for the typing errors in the April issue the save button on the computer was not pressed at the right time!!

May, 2006

If you have been watching 'Planet Earth' on T.V., you can't help but be in awe of the beauty and diversity of our world. Every week I think it can't be more amazing but it is – from the frozen wastes where even here plants and life exist despite low, low, temperatures, to the desert where searing heat does not deter life and breathtaking views, and under the sea is another miraculous world of colour, beauty and strange, unreal forms of life. How wonderful to see the world in such stunning pictures, and have revealed to us the wonders of this world, but we only have to look out into the gardens or the local woodland to see just a tiny part of this world, as trees burst into blossom, birds build their nests and rabbits are playing in the fields and along the side of the roads.

When anyone mentions 'Scouts', 'Dib dib dib' and 'dob, dob, dob,' are used mockingly, but what a surprise to find out what these words really mean. 'Dib,dib, dib, is actually spelt 'DYB' and stands for 'Do your best' and 'DOB' means 'Do our best'. This is the philosophy of the Scout Movement. We live and learn'.

As the first class stamp went up to 32p. it reminded me of when at school we all had pen friends, and stamps were cheap. In those days we always seemed to be writing letters or sending or receiving parcels. Just after the war my Auntie worked in the Macintoshes sweet factory in Halifax, and would send us a box of Quality Street toffees. She also once sent my sister a pair of clogs, but they were very uncomfortable and very noisy. When my dad sent a parcel he would wrap it in brown paper, put string round, and melt sealing wax on the knots. I loved to watch him do this. What a change in postal habits – no more brown paper parcels tied up with string, as we use sellotape for parcels, and no more letters tied with blue ribbon as we have E-mails. I suppose soon letter writing will be something only a fond memory in history.

Marie Cove.