

# Church of St. Laurence Magazine

Parish including Birchley Heath, Ansley Common  
Ansley Village, Church End

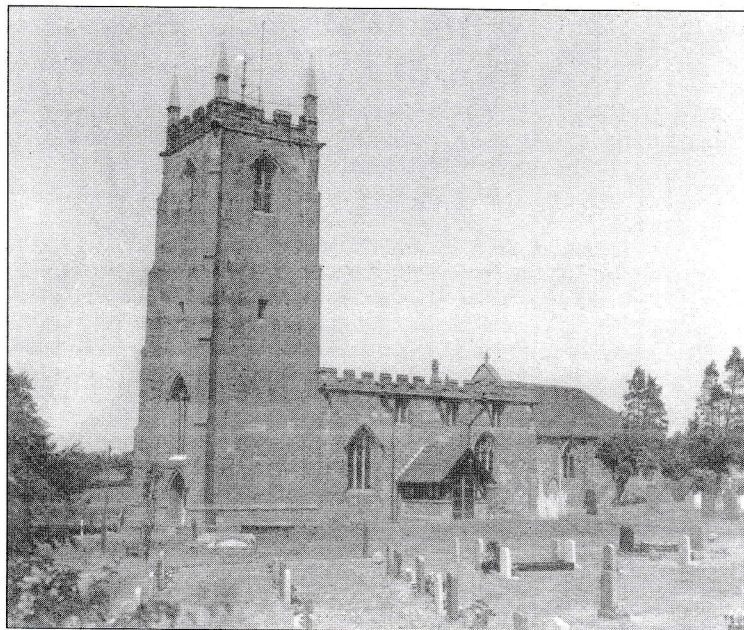
---

No: 947

MAY 2004

Price 25p

---



Vicar:

REV. PETER ALLAN

Tel: 024 7639 9070

Wardens:

MARGARET ANTILL

Tel: 01827 874520

MOREEN FREESTONE

Tel: 024 7638 1833

St. Johns Leaders

DAVID & MARIE COVE

Tel: 024 7639 4114

---

**Print Centre 0800 389 4089**

# May Editorial

What a wonderful Easter we had! After the drama of The Service of First Light on Easter Eve came the dawn of Easter Day and then in a beautifully decorated church, we celebrated the victory of life over death, of hope over despair, of forgiveness over evil and of love over hate. The wonderful news is that Easter is not a one day event. Easter is for ever. Therefore we invite you to join us as we travel to Nuneaton Borough Football Ground to hear J. John, one of the most gifted Christian speakers of our generation. Tickets £3 from Mandy Watts ( 024 - 76397654 ) who will also be organising a coach. Do come! It is simply too good an opportunity to miss.

This month weddings necessitate a change of Day-Off. Throughout May I shall be off on Fridays rather than Saturdays. Funerals on Friday will be taken by Donald Parr and Mandy Watts. Of course, their ministry is not restricted to services on Fridays and Sundays. So please feel free to ask for them and they will be very willing to oblige whenever possible.

In my article this month I want to focus again on the need to improve Ansley Village Church Hall and St. John's Hall in Ansley Common. Our thinking is gradually developing so here's the story so far.

## The Village Church Hall:

We are hoping to get grants to upgrade this replacing doors and windows, providing better storage, improving the floor, modernising the kitchen and toilets and tarmac the car park. We would also like to increase its usage in particular to increase the number of regular users.

## St. John's Hall:

We hope to totally replace and modernise the existing kitchen, to provide greatly improved storage, to provide a disabled toilet, to redecorate the interior and to landscape the exterior. We are delighted that the hall is being used more and hope that over the next few years this will increase dramatically.

Here's where we need your help.

1 Gifts for either hall could be used to help us access money from landfill sites ten times the value of the original gift.

2 Even more important we need to know what you think. Would you like new activities to take place at either hall? What would you attend?. Would you help anything get off the ground? How could we improve the halls to better cater for your needs?

In a few months we shall be about the parish asking for the views of residents - both those who use the halls and those who currently do not. Volunteers to speak to people would be greatly appreciated as would a few moments of your time if you are asked. We need to know what you think partly so that the activities are based on what people want, not on what others think they ought to have, and partly to convince grant-giving bodies that we are genuine in our concern to assist the whole community in whichever way we can. The survey will include Birchley Heath and Church End for we are not only looking at the two halls but the needs of the whole community that the church is called to serve.

May I finally take this opportunity to thank all those who care for these halls and all who support their work in so many ways.

Your friend and Vicar, Peter

St John's Hall Ansley Common.

Wednesday 5 <sup>th</sup>	9.00a.m.		Holy Communion.
Sunday 9 <sup>th</sup>	10.30a.m.	Easter 5	Family Service
Wednesday 19 <sup>th</sup>	9.00a.m.		Morning Prayer.
Sunday 23 <sup>rd</sup>	10.30a.m.	Ascension	Holy Communion
Sunday 30 <sup>th</sup>	10.30a.m.	Whitsun	Songs of praise

St. Laurence's Church Sunday services 10.30 a.m. & 6.30. p.m.

May 2nd	Easter 4	a.m. All Age Worship
		p.m. B.C.P .Holy Communion
May 9 <sup>th</sup>	Easter 5	a.m. Holy Communion
		p.m. Evensong
May 16 <sup>th</sup>	Rogation	a.m. Special Service
		p.m. Holy Communion
May 23 <sup>rd</sup>	Ascension 1	a.m. The Lord is Here Communion
		p.m. Evensong
May 30 <sup>th</sup>	Whitsun	a.m. Holy Communion
		p.m. Evensong

Sunday 9 <sup>th</sup>	3 p.m.	J. John at Nuneaton Borough
Monday 10 <sup>th</sup> 17 <sup>th</sup> & 24 <sup>th</sup>	7 p.m.	Links Group meet Village Church Hall.
Monday 10 <sup>th</sup>	7 p.m.	Prize Bingo St. John's Church Hall
Tuesday 4 <sup>th</sup> & 18 <sup>th</sup>	2 p.m.	Prayer Group meet 10 Nuthurst Crescent.
Tuesday 18 <sup>th</sup>	10 a.m.	Morning Prayer in the Village Church Hall. Followed by Senior citizens.
Wednesday 5 <sup>th</sup>	7.30	The Visitation for the Wardens.
Wednesday 12 <sup>th</sup> & 26 <sup>th</sup>	7.30	Wednesday Fellowship meet at 10 Nuthurst Cres.
Thursday 6 <sup>th</sup>	7.30	P.C.C. Village Church Hall.
Thursday 13 <sup>th</sup> & 27 <sup>th</sup>	7.30	Ansley Common Fellowship.
Thursday 13 <sup>th</sup>	9.30	Village Hall Committee.
Thursday 20 <sup>th</sup>	7.30	Ascension day service at Fillongley.
Thursday 27 <sup>th</sup>	7.30	Deanery Meeting.
Friday 21 <sup>st</sup>	10.00 – 3.00	Plant Sale Village Church Hall.
Saturday 22 <sup>nd</sup>	10.00 – 12.30	Plant Sale Village Church Hall.

**From the Registers**

**Baptisms**

At St. John's on Sunday 28<sup>th</sup> March Morgan Jack and Regan George Payne were baptised These are the first children to be baptised at St. John's for many years. Morgan, who is two, commented that the water was wet.

**Funerals**

Janet Murray (63) was born in Edinburgh just off The Royal Mall. She was only 15 when by a glance she caught Trevor's attention across a crowded room. It was to be the start of a marriage in which they shared great joy, but tremendous sadness. In joy Janet lived to the full, throwing herself into every social event with joy and laughter. She faced sadness with courage and resolution, always placing the needs of others above herself. She will be greatly missed by all her family and friends from near and far who packed St. Laurence Church on Friday March 21<sup>st</sup> to celebrate her life and mourn her passing.



The burial took place in St. Laurence Churchyard of Thursday April 8<sup>th</sup> after the service at Ridge Lane Methodist Church of Norah Steggles (82). She lived in Birchley Heath all her life attending Ansley Church School and then working at Conner's and Courtauld's factories until her marriage to Len in 1953. She loved walking and was a loyal supporter of Atherstone Football Club. In her care for her appearance and in her character and conduct she was a true lady of the village. Throughout her life she was a staunch and devoted member of Ridge Lane Methodist Church which she served most faithfully. She will be greatly missed.

#### **AGM**

The annual general meeting of the P.C.C. was held on 25<sup>th</sup> March. There is a copy of the accounts and reports in the Church porch and at St. John's. 2003 was a very busy year, it will be remembered as the year the annexe became a reality, and the arrival of our vicar. The Church Wardens have both been re elected, and will be officially retaking their office at the Visitation on the 20<sup>th</sup>. Margaret Kimberley is our new treasurer, as Joyce is retiring later this year. Thank you to all officers and helpers for all your hard work over the year, this list is endless. Whatever task you undertake, or donation for the Church **Thank you**. David Lloyd and Anne Moore became new members of the P.C.C. Please remember the P.C.C. in your prayers that their discussions and decisions will be fulfilling God's will for the parish of Ansley. Financially although our total assets have depleted, because of the cost of the building of the annexe, income has in general kept pace with expenditure. However there is little margin for complacency we must keep our giving and fund raising in line with inflation and increased costs.

#### **Plant Sale**

This annual event will take place on the 21<sup>st</sup> and 22<sup>nd</sup> May in the Village Church Hall. There will be the opportunity to buy your bedding plants, trailing plants and cuttings etc. If you have any surplus plants please bring them along. There will be light refreshments and all proceeds are for the Church Hall.

Advance notice - For Marie's Coffee Morning June 16<sup>th</sup>.

Dave and Marie Cove are taking orders for hanging baskets and tubs starting at £5 each. If you would like to have your existing tub or basket filled or would like to purchase one please have a word. David would welcome any tubs that you no longer wish to keep.

#### **Prize Bingo**

The St. John's Hall committee are holding a Prize Bingo in aid of the hall funds, all the prizes have been donated and it will be a good evening (If you are not a regular player of bingo, the rules will be explained)

#### **A.C.Y.C.**

Ansley Common Youth Club for 11-14 year olds was officially launched on Wednesday 31<sup>st</sup> March with representatives from the local community, the council, police the press and others present. The food was excellent, and the beautifully decorated cake was delicious.

Many thanks to the leaders for taking on this worthy task and we wish the club many happy hours together.

Not forgetting the existing youth club on Thursday nights for 7-11s which has been running for a long time, and has kept the children motivated for many years.

#### **J. John**

Sunday May 9<sup>th</sup> there will be a coach going to Nuneaton Borough Football ground to hear the evangelist J. John talk commencing at 3.00 p.m. tickets are £3 and if you would like to attend please have a word with Mandy Watts. When J. John spoke on the Ten Commandments at the Cathedral a few years ago there was standing room only and everyone was most impressed.

#### Ansley Parish Council News.

Traffic calming in the Parish - members of Parish Council met the Rural Traffic Calming Manager, Mr. Birkbeck from W.C.C. on 18.3.04 to discuss possible solutions following requests from residents within the Parish.

Unfortunately no quick solutions and process can take up to 4 or 5 months. Full consultation process agreed to include full assessment of the traffic flow within the whole parish. Parish Council will keep residents informed of ongoing progress.

Neighbourhood Watch - members of this held a very successful spring clean in Ansley Village 20<sup>th</sup> & 21<sup>st</sup> March. N.W.B. Council supplied litter pickers, black sacks and arranged for the removal of the rubbish collected over the busy weekend period. Parish Council would like to thank everyone who supported the clean up campaign.

Village of the Year: Agreed Parish Council would enter the annual 'Warwickshire Best Kept Village Competition' this year, which is organised by Warwickshire Rural Community Council. Judging takes place in June and notices advertising the competition will shortly be displayed in the Parish notice boards.

Councillor Vacancy has arisen following resignation of Mrs. G. Smith at March meeting. Details advertising vacancy displayed on Parish notice boards.

Purley Chase Hotel Proposals: Applicant has appealed against the Secretary of States decision to refuse permission for proposed Purley Chase Hotel development, a date for the hearing has yet to be decided.

Next meeting dates: May 13<sup>th</sup>, June 3<sup>rd</sup>, July 8<sup>th</sup>, Sept. 2<sup>nd</sup>. The date of June meeting brought forward due to European Elections being held on 10<sup>th</sup> June.

-----

May 2004.

I was listening to someone talking about history and how so many of us know specific dates such as 1066 but we know nothing of our identity, and I thought as they spoke that our history is all around us in the place where we live, in our relatives, our neighbours and I remembered talking to an elderly man some time ago. He told me that when he first moved into Ansley Village there were no footpaths or street lights. What great history that man had experienced, as man found ways of travelling faster and faster to every corner of the world; telephones not only in nearly every household, but in nearly every hand with the emergence of the mobile 'phone. He had seen T.V. expand from one original channel to many, many and satellite beaming pictures from all over the world as journalists commentate on events in far countries as if they were in the next room.

This made me wonder what I would assess to be the biggest change I have seen in my lifetime. There have been many technological changes, but I have seen a decline in religion as Sunday was the Lord's day and we went to Sunday school and to church and many of our friends went to Chapel. No shops were open, nobody playing in the street and Sunday was indeed a quiet day. In fact the world has definitely become a much louder place to live in with incessant traffic on the roads and overhead. Sometimes when I am on my own I like to switch off the T.V. and I sit and enjoy the silence. This peace and quiet is especially appreciated by mothers when the young ones are in bed and they can enjoy 'the sound of silence' - what bliss!

Marie Cove.