

# **Church of St. Laurence Magazine**

Parish including Birchley Heath, Ansley Common  
Ansley Village, Church End

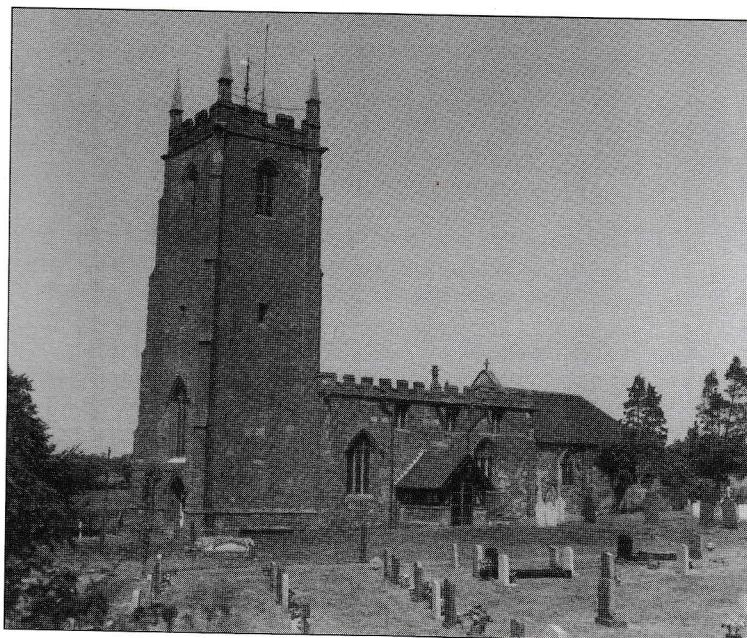
---

No: 935

MAY 2003

Price 25p

---



Wardens:

MARGARET ANTILL  
MOREEN FREESTONE

Tel: 01827 874520  
Tel: 024 7638 1833

St. Johns Leaders

DAVID & MARIE COVE

Tel: 024 7639 4114

---

**Print Centre 0800 389 4089**

The weather for most of March and the beginning of April was absolutely fabulous, as we rose to bright blue skies and bright sunshine which, despite a cold wind, lasted all day. The trees, fields and gardens burst into life and were soon transformed from being dead, dull and lifeless to bud, blossom and beautiful flowers. Also if you drive around the lanes locally you will see countless Pheasants and Rabbits of all sizes from full grown to tiny babies only a few inches long. Spring really is with us.

Every morning our garden path is littered with earth and the borders look as if someone has been weeding or hoeing, and every day I sweep the path. We always blamed the squirrels as we had seen them burying nuts and thought they were retrieving them. However, it is not the squirrels, it is a male and female Blackbird who come every day and dig in the garden. They have a nest in one of the Fir trees at the bottom of our garden, and they send away other birds who come near. They do make a mess, but I am looking forward to seeing their young.

In the course of doing some Spring Cleaning we decided to buy a small shredder as there are warnings that it isn't safe to throw away papers containing your personal details. It was fascinating to find some really old newspapers, which, until I looked closely, I couldn't imagine why I had kept them. There were some of the same advertisements and their slogans haven't changed much e.g. in the 1970's Persil was even then being advertised as 'New Formula'. Also I found some really old knitting patterns and I could even remember knitting and wearing some of the garments. It was unbelievable, as they were so outdated. We had accumulated so many old bills and various bits of paper, when they were shredded it filled a black sack. Our lives must consist of one big paper chase!

During the Easter season I remember as a small child being given a very fine China egg cup in the shape of a Rabbit, which I still use. Also when my children were small they had Sooty egg cups containing a chocolate egg, and I still have one of these. The emphasis wasn't so much on chocolate as this was hard to get, but we did have a boiled egg on Easter morning in a special egg cup. Nowadays children have lots of Easter eggs from different relatives and there are so many to choose from, with everyone having their favourite. For us Easter meant new clothes - a pretty Easter bonnet, a floral dress and white cardigan, white ankle socks and of course new sandals, which we proudly wore to church on Easter Day. It was also a most special day as we celebrated the Resurrection of our Lord Jesus Christ, and in fact when we were older we would go to Communion at 7 a.m. before we had anything to eat or drink. I have always loved Easter Sunday after the sadness of Good Friday with its promise of new life and new hope.

Marie Cove



If you require the services of a vicar please have a word with Moreen who is dealing with baptisms and Margaret weddings. Funerals can be arranged with either.

St John's Hall Ansley Common Services 10.30 a.m.

May 11 <sup>th</sup>	Easter 4	Family service.
May 25 <sup>th</sup>	Rogation	Holy Communion.

St. Laurence's Church services 10.30 a.m. & 6.30. p.m.

May 4 <sup>th</sup>	Easter 3	a.m. All Age Worship with the Worship Team. p.m. BCP Holy Communion Rev. L. Beard.
May 11 <sup>th</sup>	Easter 4	a.m. Holy Communion and Junior Church Rev. P. Raine. p.m. Evensong M. Watts.
May 18 <sup>th</sup>	Easter 5	a.m. All Age Worship with the Worship Team. p.m. Evensong Rev. N. Clarke.
May 25 <sup>th</sup>	Rogation	a.m. The Lord is Here Communion Rev. P Raine p.m. Evensong Rev. A. Welsby.

Mondays 5<sup>th</sup> 12<sup>th</sup> and 19<sup>th</sup> at 7 p.m. The Links youth club meet. in the Village Church Hall.

Tuesday 20<sup>th</sup> at 9.30 a.m. Morning Prayer In the Village Church Hall. The Senior Citizens meeting follows, everyone is welcome to this service.

Monday 14<sup>th</sup> Ansley Common Fellowship meets

Wednesday 7<sup>th</sup> & 21<sup>st</sup> The Wednesday Fellowship group meet

Wednesday 14<sup>th</sup> & 28<sup>th</sup> The Prayer group meets at 10 Nuthurst Cres. at 2.p.m.

Friday 9<sup>th</sup> Line and 60s dance at St. John's Church hall

Friday 16 & Saturday 17<sup>th</sup> Plant sale Village Church Hall.

Thursday 22<sup>nd</sup> Arch Deacon's Visitation at Bedworth Parish Church.

We would like to thank everyone who contributed to the different parts of the weekend of Mothering Sunday. Friday was a quiet time for those who attended. Saturday was both dry and reasonably warm, which made being out meeting the people on the Saturday a very pleasant task. Over the weekend we distributed well over 100 leaflets to the different visitors to the Churchyard. The Sunday services were well attended and the posies were well received. At the evening service the gifts from the weekend were presented at the altar. A total of £2 510 was given towards the new room and £207 to the Churchyard fund. Thank you to everyone who contributed to the weekend in any way.

### The New Room

After so many years of talking, applications and appeals work is now under way. Let us all hope and pray that this project runs smoothly after so much planning, and that it will be completed in time for this years Flower Festival which begins on the 22<sup>nd</sup> August. We again ask that if you have any query or want any information about the building that it be directed to, either Churchwarden or Ron Morewood. This will save time for the builders and ensure that things follow the correct format that has been agreed with the contractors. Thank you for co-operation as it will save time all round.

If you wish to use toilet facilities at the Church during the duration of the building work there is a temporary arrangement at the entry to the old boiler house at the base of the tower which is open at all times.

As mentioned last month, we are well on our way to reaching our target financially, with over 86% of the total already obtained. However there is still that last bit to achieve. It would be wonderful if we could pay the full cost upon the completion of the building. If you would like to make a contribution please do so at any time.

#### **From the registers.**

Elsie Elanor May Watkins (née Fessey) born 1935 in Arley, but lived in Nuneaton most of her life. She had worked as a nurse at Bramcote Children's Hospital. Elsie was interred in the family grave on 4<sup>th</sup> April

#### **The Annual General Meeting**

At the A.G.M. on 27<sup>th</sup> March there were no changes in the people appointed to the various offices. However Ian Richardson, with his new commitments, is finding membership of the P.C.C. too demanding at the present time and has decided to stand down. We wish to thank him for his contribution and advice to the council over the years.

The overall finances of all account, are down by £3 000, but we have spent £15 421 on the Village Church Hall and over £9 000 towards the new room.

The Church wardens wish to thank everyone who has helped in so many different ways over the past 12 months. It is only by the co operation of everyone that things have run so smoothly. For all the many tasks both great and small, that are carried out regardless, often without anyone knowing, both in Church or around the parish that make such a difference to the life of the Church. Thank you.

On Wednesday 22<sup>nd</sup> the Arch Deacon will "swear in" the Church Wardens for the next 12 months. It is at this service that the Wardens are given their responsibilities. Your prayers are requested for them, as they continue in their duties. At the time of writing there will be at least a further 4 months interregnum and then God willing the new vicar will need to be introduced to the parish all of which will take time and organising.

#### **The new vicar**

At the time of writing the interviews with three candidates are imminent, but the procedures will need to be completed before an announcement made. (That is provided that one of the candidates is suitable and is willing to accept the position.) Please continue to remember the candidates, and those charged with the appointment, in your prayers. I can assure you that once it is official the news will spread rapidly.

Daffodil Coffee Morning 1st April at Field Farm, Pound Lane, organised by Stella Inglis-Roy. Eighty Pounds was given from this to St. Laurence, Ansley, and this is greatly appreciated. Thank you to Stella and all who made this a very enjoyable occasion, despite the rain.

**Plant Sale:** This very popular event will take place on Friday 16th May 10 a.m. to 2 p.m. and Saturday 17th May 10 a.m. to 1 p.m. There will be the usual varied assortment of Bedding Plants, together with some Perennials, and of course a cup of tea or coffee and a biscuit. There will also be an Allotment stall for vegetable plants and fertilisers etc.

**May Dance:** To take place on Friday, 9th May at St. John's Hall, Ansley Common. There will be Line Dancing led by Joanne Humpage (nee Phillips) and Old Thyme and Modern. Admission: Adults 1.50p, Children 50p. with adult. Please bring your own drinks.

## ANSLEY PARISH COUNCIL NEWS

### MAYOR OF NORTH WARWICKSHIRE VISITS PARISH COUNCIL MEETING

The Mayor of North Warwickshire for 2002/3, Cllr Derek Pickard and his wife attended the February meeting of the Parish Council. It was Cllr Pickard's wish to visit every Parish within the Borough during his term of office. The Parish Councillors considered that in attending what was a typical monthly meeting, the Mayor had been given a valuable insight into day to day life in Ansley Parish.

### ROAD CONDITIONS IN PIPERS LANE

Concerns continue regarding the road conditions on Pipers Lane as a result of the loads of materials being transported to the Purley Chase Golf Club. NWBC having reached a decision that a breach of planning conditions relating to the maintenance and keeping clean of the highway has taken place, has resulted in more road sweeping/brushing being undertaken. Despite this the Parish Council at the March meeting were distressed to learn that three quite serious accidents have taken place on this stretch of road, the cause of which may be directly attributable to the road conditions. WCC Coleshill and NWBC are both aware of this situation which is hoped will improve more significantly in the very near future.

### FLY TIPPING & LITTER

It was with disappointment that the Parish Council reported that fly tipping in the Parish persists and this coupled with a large amount of normal litter being evident especially on the B4114 approach into Ansley Common, is making the Parish look quite untidy. NWBC are aware of the issues but are still to attend a Council meeting to discuss relevant matters appertaining to the Parish.

### QUEENS JUBILEE TREE PLANTING

As part of the Queens Jubilee 2002 Celebrations, the Parish Council agreed some time ago to the planting of an English Oak Tree at the recreation ground in Ansley Village. NWBC who spearheaded the initiative have advised that this tree is now available and will be planted at the Council's chosen site in early course.

### BUS SHELTERS IN PARISH

The Parish Council's intention to reinstall the two sheets of perspex removed from the bus shelter in Ansley Common some time ago, have been called to a halt. A recent site visit has brought to light that the remaining four sheets of perspex have also now been removed, no trace of which can be found. It was commented that this sheeting was only renewed two years ago, and it is with extreme disappointment that this shelter has continued to be a target for vandalism/theft. Residents requests for new bus shelters in different parts of the Parish have been received, but in view of the current situation, and the expense involved in not only installing new shelters but maintaining and repairing these facilities, it was agreed that an appropriate course of action has to be carefully considered.

### WARWICKSHIRE POLICE - MOBILE POLICE STATION PROJECT

Local officers from Atherstone Police attended a meeting to discuss with the Council, a new initiative to purchase a mobile police station. This would operate on widely advertised and strict timetable basis and would enable the local officers to regularly visit their respective beat areas. The purpose of the mobile police station, expected to cost in the region of £65k, would be to raise police awareness, reduce the fear of crime and give the local community the opportunity to speak to officers easily and conveniently about matters of concern. A large proportion of the funding has already been achieved from larger organisations but Warwickshire Police's request for a one off grant to assist in reaching the target capital cost of such a vehicle is now to be considered by the Parish Council.

### NEXT MEETING DATES

May 8th    June 12th    July 10th

Please note that any items wishing to be discussed at future Parish Council meetings, must be forwarded giving details in writing to the Clerk, Mrs T Pointon at 17 Laurel Drive, Hartshill, Nuneaton, Warwickshire, CV10 0XP.