

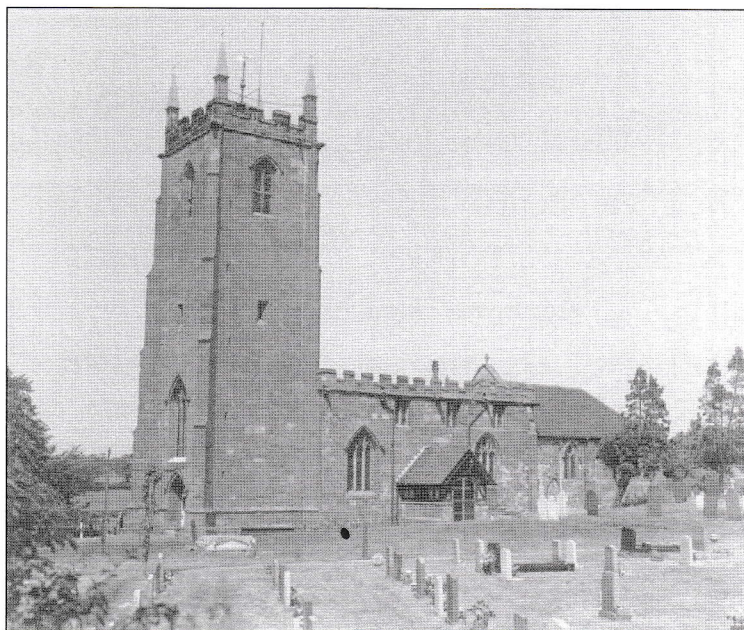
Church of St. Laurence Magazine

Parish including Birchley Heath, Ansley Common
Ansley Village, Church End

No: 1002

APRIL 2009

Price 25p



Vicar:

REV. PETER ALLAN

Tel: 024 7639 9070

Wardens:

MARGARET ANTILL
MOREEN FREESTONE

Tel: 01827 874520
Tel: 024 7638 1833

St. Johns Leaders

DAVID & MARIE COVE

Tel: 024 7639 4114

Lay Reader:

MANDY WATTS
GWYNETH HICKMAN

Tel: 024 7639 7654
Tel: 024 7639 8901

www.ansleychurch.org

Print Centre 0800 389 4089

Bridges Out, Walls Down, Roots Down

I know that several of you read each other's newsletters to see what's going on elsewhere. You will know that I write something different for you all. Sometimes entirely different, sometimes just slightly tweaked to reflect your different situations. Well this month's letter is for you all,

One of the joys of working with Bishop Christopher is that he puts things into words things that I have felt strongly but have not quite known how to phrase them.

His words Bridges Out, Walls Down, Roots Down so neatly sum up what I think we are about that I want to share them with you.

Bridges Out.

The church doesn't just sit there waiting for people to come. It engages with its community. We have been doing that through the Ley Group Young People's Project and through the redevelopment of our community premises - Ansley Village Church Hall, St. John's Hall, Ansley Common, Arley and St. Michael's Community Project and the Old Barn Project at St. Wilfrid's Old Arley. It is not enough to say come to us we need to reach out in love and care and that's exactly what we are seeking to do.

Walls Down

So we meet people's felt needs. They show an interest. What next? We need to make it as easy as possible for people to gently make that journey of faith. From the relaxing of rules about baptism and second marriage to the development of new forms of worship (such as the 4 O'clock Club at Ansley Village and its sister the 10.30 Club at St. Wilfrid's) my hope is that whatever tentative moves people are making we shall not put barriers to their journey of growing in faith but rather drop the walls that people feel are an obstacle.

Roots Down

We are doing new things or rather I hope God is doing a new thing. We need more than ever to root ourselves down in God's love through our shared commitment to worship. Prayer, Bible Study and reflection on what God is saying to us. We need to see the glory of God. We need God to shine through us. It is vital that all we do in, with and for the community strengthens and deepens our faith. We need to keep our walk with God alive. As a Church we are seeking to help this through the Bishop's Certificate, encouraging each other to read the whole Bible and through the Healing Services on occasional Thursday nights at St. Wilfrid's. Bridges Out, Walls Down, Roots Down. Can they be contradictory priorities? Competing demands on our time and approach to the people we meet? Yes of course they can! Some would emphasise God's unconditional love, others the challenge of the Gospel. For Jesus they fitted perfectly. He reached out in love to all without distinction and in love he died. So must we. He also challenged each who wished to be his follower to take up the cross and follow Him. So must we and that includes letting Jesus challenge us.

As the world turns to Spring may the love of God shine in and through us all,

Peter

April, St. Laurence's Church – Services

Sunday 5 th	Palm Sunday	10.30 a.m.	Special Joint Service
		4.00 p.m.	Family Service in Village Church Hall
		6.30 p.m.	Holy Communion
Sunday 12 th	Easter Day	8.00 a.m.	Holy Communion
		10.30 a.m.	Holy Communion
		6.30 p.m.	Evensong
Sunday 19 th	Easter 2	10.30 a.m.	Morning Prayer
		6.30 p.m.	Holy Communion
Sunday 26 th	Easter 3	10.30 a.m.	Holy Communion
		6.30 p.m.	Evensong

St John's Church Hall Ansley Common Services

Please note All Services will be held at the centre St. John's Close until the work on the hall has been completed

Sunday 5 th	Palm Sunday	10.30 a.m.	Joint service at St. Laurence
Sunday 12 th	Easter Day	10.30 a.m.	Holy Communion
Sunday 19 th	Easter 2	10.30 a.m.	Family Service
Sunday 26 th	Easter 3	10.30 a.m.	Holy Communion

Other regular activities

Full details on the notice boards. No activities will be taking place in St. John's Hall until the refurbishment is complete.

From the Registers

Baptisms

We welcomed Daniel John Ralph and Joshua Thomas Collins into the church family by Holy Baptism at the morning service on Sunday 8th March, but because of the work being carried out at St. Laurence it was necessary for this to be moved to St. Wilfrid's Old Arley.

Funerals

The funeral took place on the 29th January of John William Turner (Bill) aged 79 yrs, husband of Beryl (nee Raven). His ashes were interred on the 15th March into the family grave of William and Hilda Raven. Bill will be deeply missed by his wife and all his family.

The funeral of Annie Grant, loving mother of Robert and Dennis, took place on Tuesday 20th January at the Heart of England Crematorium. She is deeply missed by her family and friends.

The funeral of Peggy Rowntree took place on February 18th followed by committal at Heart of England Crematorium and subsequent interment in St. Laurence churchyard. She married Bill on Boxing Day 1949 and together they shared the joy of the birth of Beryl and Sonia and later granddaughter Sian. She loved cycling and dancing and was a devoted member of St. Laurence's Church.

Holy Week

Palm Sunday

To celebrate the triumphal entry of our Lord into Jerusalem there will be a special joint service for all ages at 10.30 a.m. held in the Annexe when we will hear retold the events of that

momentous week. At 6.30 p.m. there will be a service of Holy Communion. It will be during these services that the palm crosses will be distributed

Maundy Thursday

During this special week when we remember how much our salvation cost our Lord we will be celebrating the 'Last Supper' at The Village Church Hall at 7.00 p.m. (The change of venue from previous years is because of the building work at St. John's). There will be a light supper of bread and soup incorporated in the service which will finish with the singing of hymns, much as they did at the first 'Last Supper'. (please bring glass spoon and dish) This year there will be a special retiring collection.

Good Friday

On Good Friday the plan is to hold the vigil in Church commencing at 7.30 p.m. This is a time of reflection and it will concentrate our minds on the suffering of our Lord and of man's inhumanity to man.

Easter Flowers

As the workmen will be back in church immediately after the holiday weekend, the P.C.C. have decided that there is little point in spending a lot of money on flowers that will have to be removed at the end of Easter Day. It was decided therefore that the plate for flowers would be put out as usual and any donations, especially those in memory of a loved one could be given in the usual way, but that the money would be put into the much depleted fabric fund.

However, there will be Easter flowers on the altar.

Church cleaning

It will be necessary to have a big cleaning team in order to get the church ready for Good Friday and Easter. If you could please let it be known if you are willing to help to ensure that the church although not back to its normal state will be as clean and tidy as possible to celebrate this Easter.

Easter Day

This very special festival will commence with 8.00 a.m. Holy Communion in church. At 10.30 a.m. there will be celebrations of Holy Communion at St. Laurence and St. John's (in the community room St. John's Close). Then at 6.30 p.m. Festival Evensong in church. Each service will celebrate the resurrection of our Lord, and will be a special time to think of the wonderful meaning of Easter.

Please try to come to one of the services.

'From tiny acorns mighty oaks do grow'.

The total paid into our Fabric Fund in February was £26.00 bringing the total to £74.30 all from small change collection. Thank you to everyone who contributed. The jars will be in church for the rest of the year.

The Church Fabric

As with many old buildings when repairing one part, then another problem comes to the fore and the building also yields some of its secrets.

The situation is such that a great deal of extra plaster work is required in the nave, as well as some work on the drainage and surprise, surprise it will also cost more.

The secrets discovered are that the north aisle while dressed stone on the outside it is Ansley Hall brick on the interior. Then in the nave while expecting to find coats of lime wash on the plaster, this is not the case, it is under the plaster, showing that much of the plaster on that wall was added at a later date. Unfortunately this is not the correct type of plaster for a sandstone building as it retains moisture in the wall by not letting it breathe.

At a meeting held in Church with some members of the P.C.C, diocesan representatives, our architect and the builder present the decision was taken to remove the incorrect low level plaster up to two meters and any loose plaster. The nave plaster will be fully repaired correctly. Because of the added costs it may be necessary to delay the work in the north aisle until funds are available to complete that part of the work and decorate the whole church. However, the north aisle will be usable, but it will just have the bare bricks on the walls. This decision will ensure that the mess the whole church is in at present will be contained to just once and we will not be faced with such upheaval again, hopefully in our life time. Please continue to save your small coins as we are going to need a great number for all this work to be completed, and remember this project in your prayers.

St. John's Church Hall

To the great joy of many the 25th February saw the arrival of the workmen to commence the work on the hall. At the time of writing the work is on schedule and is due to be completed by the end of July. This project has been a long time in the planning and with a very tight budget we hope and pray it will continue to proceed smoothly. We hope the building work will not cause too much disruption, we apologise to the local residents for any inconvenience caused.

Reports.

The reports on the Women's World Day of Prayer and the Table Top Sale next month

Apology

I must apologise for sending a draft version of the March magazine to the printers and not the final copy.

Stressful Times Advice from the Arthur Rank Centre

Worried? Troubled? Stressed?

It can help to talk. We're here to listen.
Would you like specialised or local support?
We can find it.

We offer a totally confidential, non judgemental listening service guaranteeing anonymity to anyone in a rural area feeling troubled, anxious, worried, stressed or needing information. We can also provide ongoing support, if necessary, until the difficulty is resolved or other help is in place.

Rural Stress Helpline 0845 094 8286
Email: ruralstresshelpline@rase.org.uk
www.ruralstresshelpline.co.uk

Prayer Requests

If you would like someone or a particular situation remembered in prayer at our Sunday Services both at St. Laurence and St. John's please hand the slip below to a member of the Church Congregation or contact the Vicar on 024 7639 9070. Please remember the vicar would be pleased to visit anyone who is sick, but he does need to know, again please ring.

Please pray forwho is

April, 2009

As many of you will know, St. John's Hall renovation is well underway, so the Sunday Congregation now meets for services at the Community Room at Nursery Hill bungalow complex. It is very snug and cosy and we have had such good attendance, almost to overflowing. It is a great experience and very rewarding to see the room full every week. We are now praying that when we eventually move back to St. John's Hall, our numbers will continue to grow.

No matter how we try we cannot stop the electronic age rushing on. We cannot escape people of all ages on mobile 'phones in every part of life - no conversation seems to be private any more. This is bad enough but now there is a suggestion that money and cheques could be made redundant in the near future. I thought this seemed ridiculous, and cannot image using a credit card to purchase a newspaper or a cup of coffee, but it seems that one bank has plans for a card for purchases under £10, which could be swiped without a pin number. This sounded very good on the surface but it doesn't take long to spend £10 and we could find ourselves out of credit sooner than we thought. This to me, though, sounds like pie in the sky as I can't ever see the demise of cash and I am holding on to that hope.

At my Grandson's school (Reception Class), they have had 10 chicken eggs in an incubator and 9 hatched. They are a joy to see and the children love them, but are so concerned about the remaining egg. One small girl said 'You see that one was right at the back and couldn't get under the lamp'. It does seem like a lovely way to teach small children about the living world, but I'm sure they won't want to see them go when they are 'adopted'.

Did you know that Allotments are 200 years old. The first ones were set up in 1809 when a six acre plot was broken up into 50 small plots for 'common' folk to grow vegetables. These allotments in Great Somerford, Wiltshire, are still being used by locals free of charge. The Rev. Stephen Demainbray had the idea and stepped in when an Enclosure Act threatened to hand all local land to the wealthy. He was official Chaplain to King George 111, whom he asked to spare part of his parish from the Act.

The King agreed and said six acres were to be kept 'in perpetuity' for locals. Would the Rev. Demainbray ever had imagined how his idea would spread throughout the land, and now 200 years later the allotments are even more popular as more and more people want to grow their own vegetables.

I thought this quote from Lord Byron was very true:

'The gardener's rule applies to youth and age.
When young you sow wild oats, but when old grow sage'

Marie Cove.