

# **Church of St. Laurence Magazine**

Parish including Birchley Heath, Ansley Common  
Ansley Village, Church End

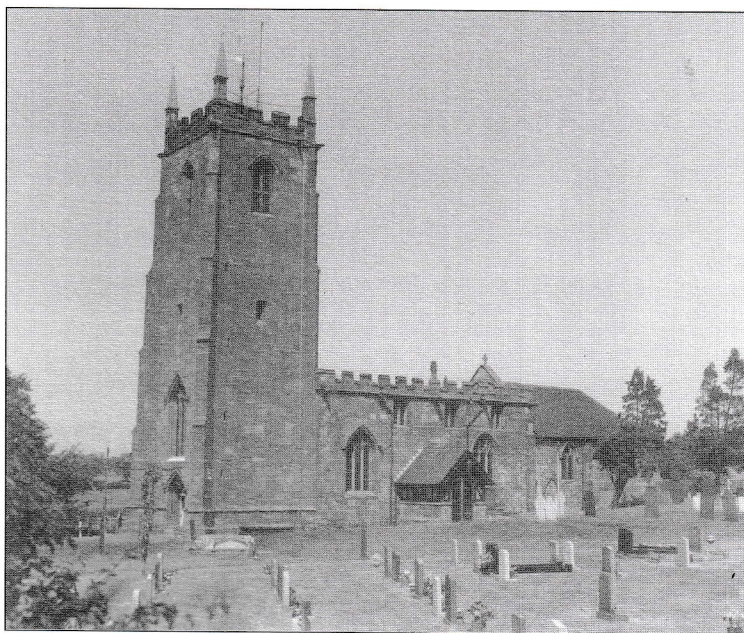
---

No: 958

APRIL 2005

Price 25p

---



Vicar:

REV. PETER ALLAN

Tel: 024 7639 9070

Wardens:

MARGARET ANTILL

Tel: 01827 874520

MOREEN FREESTONE

Tel: 024 7638 1833

St. Johns Leaders

DAVID & MARIE COVE

Tel: 024 7639 4114

---

**Print Centre 0800 389 4089**

## **Easter People**

Those who seek to follow Jesus are

### **Christmas People**

Following Jesus' example Christians are called to get involved, to share with people in sadness and in joy. Not to pass by on the other side but to be a neighbour to all.

### **Pentecost People**

Christians know they can not do all that is required of them in their own strength but turn to God that the Holy Spirit might strengthen them, lead them and transform them.

### **Easter People**

Christians rejoice that the power at work in those who believe in Christ is the very same power that raised Jesus from the dead. Easter proves that life and love are triumphant. Reassured by that wonderful realisation, it is our task to be signposts of hope.

I hope you are rejoicing in signs of hope in our communities and that you feel the Church is playing its part. With half the money pledged for the landscaping and refurbishment of the Village Hall, I trust its new look will not be long and will itself be a small but important sign of hope. Also may I commend to you the development of Godly Play a new, exciting and very special way of teaching the Christian faith especially designed for children but helpful to all ages. We shall all worship at St. Michael's, New Arley on Sunday May 1<sup>st</sup> for a Godly Play Service (no service at St. Laurence, St. John's service as usual) and then will offer Godly Play on the 1<sup>st</sup>, 3<sup>rd</sup> and 5<sup>th</sup> Sundays of each month in the Church Annexe at 10.30 a.m. All welcome.

**We are Easter People , Alleluia is our song!**

Your friend and Vicar,

Peter

## April What's On

### St. Laurence's Church

Sunday 3 <sup>rd</sup>	Easter 2	10.30 a.m.	All Age Worship
		6.30 p.m.	B.C.P. Holy Communion
Sunday 10 <sup>th</sup>	Easter 3	10.30 a.m.	Baptism & Holy Communion
		6.30 p.m.	Evensong
Sunday 17 <sup>th</sup>	Easter 4	10.30 a.m.	All Age Worship
		6.30 p.m.	Holy Communion
Sunday 24 <sup>th</sup>	Easter 5	10.30 a.m.	Baptism & Holy Communion
		6.30 p.m.	Evensong

### St John's Hall Ansley Common Services

Sunday 3 <sup>rd</sup>	Easter 2	10.30 a.m.	Family Worship & Sunday School
Wednesday 6 <sup>th</sup>		9.00 a.m.	Holy Communion
Sunday 10 <sup>th</sup>	Easter 3	10.30 a.m.	Holy Communion & Sunday School
Sunday 17 <sup>th</sup>	Easter 4	10.30 a.m.	Family Worship
Wednesday 20 <sup>th</sup>		9.00 a.m.	Morning Prayer
Sunday 24 <sup>th</sup>	Easter 5	10.30 a.m.	Holy Communion & Sunday School

### Other Activities at St. John's Church Hall

Monday 4 <sup>th</sup>	7.30 p.m.	St. John's Hall Committee A.G.M.
Monday 18 <sup>th</sup>	7.00 p.m.	Prize Bingo
Tuesdays	9.00 a.m.	Krazy Kettle Kafé & I.T. Classes
Tuesdays	7.30 p.m.	Line Dancing
Wednesdays	6.00 p.m.	A.C.Y.C.
Thursdays	7.00 p.m.	Youth Club
Friday 4 <sup>th</sup> , 11 <sup>th</sup> & 18 <sup>th</sup>	7.30 p.m.	Ball Room Dancing
Friday 6 <sup>th</sup> May		V.E. Day Social

### Activities at Village Church Hall

Mondays	7.00 p.m.	Links - Youth Club
Tuesdays	10.00 a.m.	Senior Citizens
Wednesdays	10.30 - 12.30 p.m.	Community Café
Wednesdays	1.30 p.m.	Little Angels - Parent & Toddlers
Wednesday 6 <sup>th</sup> 20 <sup>th</sup>	7.30 p.m.	Bingo
Thursday 7 <sup>th</sup>	7.30 p.m.	Annual Parochial Church Council Meeting
Thursday 14 <sup>th</sup>	7.30 p.m.	Parish Council Meeting
Thursday 28 <sup>th</sup>	7.30 p.m.	P.C.C.

### Other Parish activities

Monday 4 <sup>th</sup> & 18 <sup>th</sup>	2.30 p.m.	Prayer Group meet 10 Nuthurst Crescent.
Wednesday 13 <sup>th</sup> & 27 <sup>th</sup>	7.30 p.m.	Wednesday Fellowship meet 10 Nuthurst Cres.
Thursday 14 <sup>th</sup> & 28 <sup>th</sup>	7.30 p.m.	Ansley Common Fellowship.

### From the Registers

#### Baptisms

On Sunday 27<sup>th</sup> February Ben brought along his many friends and family to Church to celebrate his baptism. He was such a happy and lively little boy, and was so enquiring as to what was happening especially when the vicar brought him round to see everyone.



Three years old Georgia Dawn Latham was baptised on 13<sup>th</sup> March at St. John's. She had a lovely day and did a dance, in her white dress with rose buds, for everyone to enjoy. Her family provided food for all the congregation after the service in the hall.

#### Funerals

John Russell Smith's funeral took place at the Heart of England Crematorium on February 2<sup>nd</sup>. Son of Gertrude (always called "Mary") and Wilfred (Bill) and the eldest brother of Alf, Fred, Ann, Roy and Ernie, John loved the company of his nieces, nephews, great nieces and nephews.

Knowledgeable, caring, courageous with an independence of spirit, and a tremendous ability to make others feel special. He also had a great dedication to his work. John is greatly missed by all who knew him.

Joyce Maycock, whose funeral took place at St. Lawrence on March 3<sup>rd</sup>, was born in Hill Top Arley. On leaving school she worked in Woolworth's and then in motor and aircraft production. She married Wilf in 1957 and subsequently moved to Malthouse Close here in Ansley, where Joyce became well-known for her work first at Ruth's corner shop and then at the Post Office. After Wilf's premature passing, Joyce cared tirelessly for family members. She delighted in her extended family and her many friends – especially at Senior Citizens.

The funeral of June Priest Tasker took place at the Heart of England Crematorium on 7<sup>th</sup> March. June lived most of her life in Birmingham, moving to Cloverfield Cottages 10 years ago, spending those years happily living with daughter Ruth and son in law Brian.

June was sympathetic, talented and a lady of great determination, fighting back after major strokes in 1980 and 1993. St. Paul's letter to the Corinthians (1Cor. 13. 1-13) defines real love, love which is patient, kind, always hopes and always perseveres; these same words were written by children; Nigel, Roger, Hazel and Ruth of their mother, she will be very sadly missed.

#### Annual General Meetings

The Annual Parochial Church Council meeting for the parish of Ansley will be held on Thursday 7<sup>th</sup> April at 7.30 p.m. This is a public meeting and any one can ask questions, but only those on the Church electoral roll will be eligible to vote. It is at this meeting that the account for the year to 31<sup>st</sup> December 2004 will be presented. There will be reports on the different aspects of Church life as well as from the various groups and organisations that are affiliated to the Church.

It is at this meeting that the new officers i.e. Church Wardens, Deanery representatives and the sidesmen for the next 12 months will be elected.

For the first time in many years St. John's is holding its own annual general meeting. This is to be held on Monday 4<sup>th</sup> April at 7.30 p.m. in the Hall. This meeting is open to everyone and if you wish to hear a report on all that has happened in the life of the Church and the hall in Ansley Common during 2004 please come along.

You will find it amazing to look back over 2004 and see just how many things have evolved and how much has been achieved. As with all things there were also disappointments and sadnesses, but 2004 has been a year of much planning and preparations for the community of Ansley with the increase in activities. All those which commenced in 2004 will give a short report.

### **Other P.C.C. matters**

As 'Trim it' have had to relinquish the grass cutting the P.C.C. have appointed Bracken Garden Services to carry out this task for the next year. Please remember that it costs £210 each time the grass is cut.

### **Thank you**

Thanks to Marie for making the posies for Mothering Sunday a task she has willingly undertaken each year for the last 16 years.

It was on that Saturday that the Church was open all day as in normal circumstances it is a very busy weekend for churchyard visitors. However the weather was extremely cold with snow showers throughout the day. Even so there were quite a few people who braved the elements and visited. They were all able to come into the warm Church or the annexe where there were refreshments available.

As in previous years a leaflet was produced for visitors to the Churchyard for that week end and although not many were taken on the Saturday by the end of the following week most of the others had been taken.

Thank you to those who have given so generously towards the Easter flowers.

### **The new bishop of Warwick**

It has recently been announced that the new bishop of Warwick will be The Rev. John Stoyan who will be installed on 1<sup>st</sup> May after his consecration on 21 April at Southwark. He had been a curate in the 1980s in Coventry and is hoping to renew some of his old acquaintances.

### **Advanced notices**

There will be no 10.30 service at St. Laurence on 1<sup>st</sup> May to enable us to attend the service at St. Michael's where Peter Privett will giving a talk on Godly Play.

There will be a V.E. Day celebration at St. John's on Friday 6<sup>th</sup> May details next month.

### **Looking back**

After being told that little girls were expected to curtsy to Rev. C. Heaton as a mark of respect to the "cloth" I started looking in the magazine for 1905. I discovered that in the January issue mention was made that the school at Church End was closed for three weeks because there was a "serious outbreak of measles". It is also recorded that there were eight funerals in the one month, two were for elderly ladies, the remainder were for children ranging from 9 years down to 3 days. What a very sad time for those concerned.

In 1905 Ansley was part of the diocese of Worcester and in that year the diocese of Birmingham was created from part of that original very large diocese there was talk at that time that the Deanery of Atherstone should be joined to Birmingham.

It is interesting to note that the total Sunday offerings for the year were £30.11s 3d. The total for fire insurance was £1.

It was in the summer of 1905 that Warwickshire County Council approved the tender for £3,355 to build a new School at Ansley Common "for 160 mixed and 88 infant scholars"

A school inspection report of the C.of E school at Church End published stated that the school needed a clock.

Fund raising commenced to purchase a pipe organ for the church and this is the organ we have today.

ANSLEY PARISH COUNCIL: New Councillor vacancy due to resignation of Sid Tooth. A bye-election, if contested, to take place on Thursday 5<sup>th</sup> May, unless General Election called on same date. Then Parish Election deferred probably to June. Parish Council will be pleased to hear from any qualifying members of the public who wish to stand for election, especially residents of Ansley Common as there is particular need for a representative from this area. Anyone interested contact David Harris of N.W.B Council on 01827 719222. Closing date 12 noon on 7<sup>th</sup> April 2005.

Traffic Calming: Several articles in local press recently re traffic calming in Ansley Village. Parish Council has been actively involved in this problem and very close to providing proposals. Exhibition to be held locally to advertise this. Hope as many members of the public as possible will attend to get a fair representation of your views.

Mobile Police Unit: April: Ansley Club 9 am - 12 noon on 5/4/05

Ansley Common One Stop - 9am - 12 noon 6/4/05

Ridge Lane, Car Park 3.30 p.m.-6.30p.m. 8/4/05

If anyone needs Police other than in emergency, number to ring is 76 641111

Next meetings: 14<sup>th</sup> April, 12<sup>th</sup> May, 9<sup>th</sup> June, 14<sup>th</sup> July.

New Clerk: Mrs. J. Sands. 02476 394670.

-----

April, 2005.

As the 60<sup>th</sup> anniversary of V.E. Day approaches it seems more and more important for the older generation to share their memories with the younger people, so that these are not lost for ever. At St. John's we are going to celebrate the occasion with a dance on Friday, 6<sup>th</sup> May, when we hope as many as possible will dress in 1940's clothes, with an appropriate supper of sausage and mash and apple pie and custard. This will be followed by a barbecue (outside the hall if possible) on Saturday 7<sup>th</sup> May, to which we hope many of all ages will come, and if we get funding we are hoping to purchase mementos for the children to remember that day 60 years ago, which was enjoyed by so many of us, and eased some of the heartache parents and families had suffered during 6 years of war.

I was watching the blackbirds in our garden collecting material for a nest, and it is marvellous how everything in creation is so perfectly timed. God must have fine tuned this world in the beginning so that through many thousands of years there has been a season and a time for everything. We were reminded of this as the brave Snowdrops battled through lots of snow and ice this year, closely followed by Crocuses and Primulas. Our Camellia is also covered in tight buds and I saw a Magnolia ready to burst into bloom. Perfect timing, wouldn't you say?

Welcome April with your flowers bright.  
Welcome April with light, light nights.  
Welcome April when new life appears.  
Welcome April this year and all the years.

Marie Cove.