

# Church of St. Laurence Magazine

Parish including Birchley Heath, Ansley Common  
Ansley Village, Church End

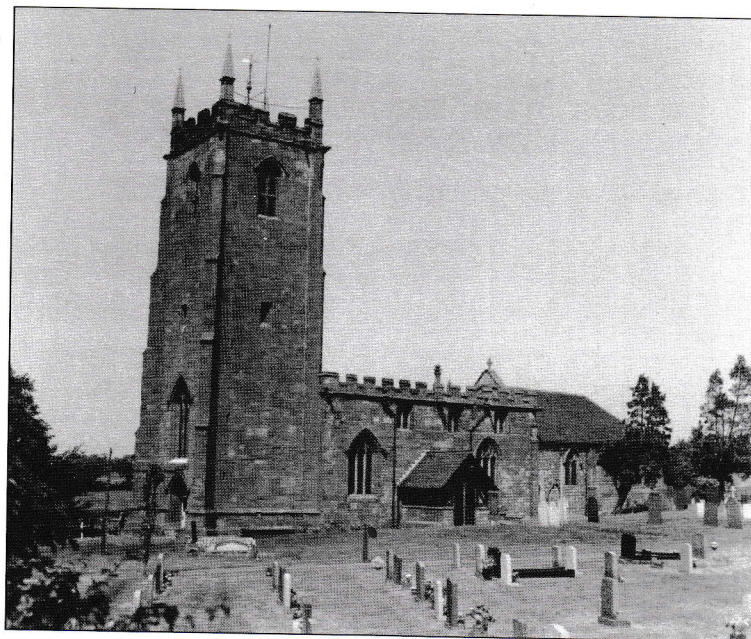
---

No: 981

MARCH 2007

Price 25p

---



Vicar:

REV. PETER ALLAN

Tel: 024 7639 9070

Wardens:

MARGARET ANTILL  
MOREEN FREESTONE

Tel: 01827 874520  
Tel: 024 7638 1833

St. Johns Leaders

DAVID & MARIE COVE

Tel: 024 7639 4114

Lay Reader:

MANDY WATTS

Tel: 024 7639 7654

**[www.ansleychurch.org](http://www.ansleychurch.org)**

---

**Print Centre 0800 389 4089**

**May you know**  
**with all God's people the breadth and length and height and depth of the love of**  
**Christ,**  
**although it can never be fully known.**

The beautiful prayer of Paul to the Christians at Ephesus sums it all up. Our live from the cradle to the grave is a journey into the love of God.

But it doesn't look like that if we look at our diaries!

Take time aside over the next few months to discover more of the love of God. Make that journey in the company of God's people.

Join the home group that is meeting now at Dave and Marie Cove's (28 Nuthurst Crescent) on Mondays from 7-8pm or after Easter (starting April 18) to Stella Niblock's at 56a Birchle Heath Road on Wednesday from 2-3pm. Or if neither time suits we shall lay on another course at a time to suit! Watch this space!

Come to our Away Day led by John, Bishop of Warwick at Mancetter Schoolroom (beside the church) on Saturday 28 April. Starting at 10 and finishing at 4, Bishop John will be leading us to discover how God can and does bless us through the ministry of healing. No charge. Bring your own lunch. Drinks provided.

...although it can never be fully known.

No we can never fully know the love of Christ but isn't it amazing that talking together we can discover just a little bit more of that inexhaustible treasure!

**Your friend and vicar,**

**Peter**

### St. Laurence's Church - Services

Sunday 4 <sup>th</sup>	Lent 2	10.30 a.m.	Morning Worship
		4.00 p.m.	Family Service
		6.30 p.m.	Holy Communion & Ministry of Healing
Sunday 11 <sup>th</sup>	Lent 3	10.30 a.m.	Holy Communion & Ministry of Healing
		6.30 p.m.	Evensong
Sunday 18 <sup>th</sup>	Mothering Sunday	10.30 a.m.	Morning Worship
		6.30 p.m.	Holy Communion & Ministry of Healing
Sunday 25 <sup>th</sup>	Passion Sunday	10.30 a.m.	Holy Communion
		6.30 p.m.	Evensong

### St John's Church Hall Ansley Common Services

Sunday 4 <sup>th</sup>	Lent 2	10.30 a.m.	Family Service & Sunday School
Sunday 11 <sup>th</sup>	Lent 3	10.30 a.m.	Holy Communion & Sunday School
Sunday 18 <sup>th</sup>	Mothering Sunday	10.30 a.m.	Family Service
Sunday 25 <sup>th</sup>	Passion Sunday	10.30 p.m.	Holy Communion & Sunday School

### Other regular activities

These continue as normal full details on the notice boards.

### From the Registers

Having been attending the 4 p.m. Family Church for some time and come to a desiring to make a greater commitment it was very pleasing to welcome in baptism Shay Betts-Graham (4) and his sister Tegan(2). Their baptism took place at St. Laurence's on January 21<sup>st</sup> – a lovely occasion for all the family.

### Weddings

On Saturday 27<sup>th</sup> January Jason Darker married Fay McKenna. The weather was kind to them after the storms and snow of the preceding days. We wish them every happiness in their life together.

### Funerals

The funeral of Elsie May Knight took place at St. Laurence Church on 21<sup>st</sup> December followed by interment in the churchyard. She will be greatly missed by all her family and friends.

The funeral of Elizabeth (Betty) Burnham of Birchley Heath took place on 30<sup>th</sup> January at St. Laurence's where her family and many friends from Birchley Heath and beyond gathered to mourn her passing. The service was followed by cremation and interment in St. Laurence's Churchyard Betty was a lady who showed and inspired in others great courage, firm convictions and deep love. She will be greatly missed by her husband Keith and by all her family.

### The 4 p.m. Family Service

This monthly service which has now been running for a year is very encouraging. The regular congregation decided that they would like to buy a sheep to help the poor people in Africa. They raised £35 which has been sent to Farm Africa, a project of which Lord Plumb is the patron, and a sheep called 'Donald' has been given to a needy family. Thank you to all who supported this project.



### Lent collection for Duncan & Helen

As last year we are again having a retiring collection for Duncan, Helen, Hannah and Simeon Watts for their work in central Asia. If you would like to know more of their work and how they are please have a word with Mandy or Bill who will be going to visit in April. The children will have grown since they last saw them, and we offer our prayers and best wishes for a good trip.

### Mothering Sunday/ Open church.

This year Mothering Sunday is on 18<sup>th</sup> March there will be, as in previous years small posies for all 'children'. The Church will be open on Saturday 17<sup>th</sup> from 10 a.m. – 4 p.m. and there will be light refreshments available.

### Away Day

As the vicar mentioned in the February issue there will be an Away Day on Saturday 28<sup>th</sup> April when the guest speaker will be Bishop John of Warwick. The theme of the day is the ministry of healing. This will be in Mancetter Church school room commencing at 10 a.m. and will finish at 4 p.m. Please bring your packed lunch with you, tea/coffee will be provided. Transport will be arranged if required.

If you are thinking of coming to this event please let the vicar or one of the wardens know. There is no charge, but there will be a retiring collection to cover expenses.

### St. John's

The painting of the hall has been finished and the new curtains fitted, the hall looks so much better, Thank you to the Krazy Kettle Kafé who have paid for the painting.

### Church Hall

The broken windows have been mended, the inside decorated, the new railings fitted and the tarmac which was delayed because of the weather is now complete. What a difference this makes to the hall. If you do not visit the hall often and wish to see some of the improvements you can do so by visiting the Church's website [www.ansleychurch.org](http://www.ansleychurch.org). The P.C.C. and Hall committee wish to thank the different organisations that helped with this work, the different contractors, who worked with David Morley to get the work completed. Also grant making organisations that supported the work Waste Recycling Environmental –(WREN), 3<sup>rd</sup> Party funding by Central Church Fund, Coalfields Regeneration Trust –(Bridge the Gap), Awards For All, The Garfield Weston Foundation, The Alan Edward Higgs Charity, Baron Davenport's Charity Trust, and the North Warwickshire Area Community Development Fund.

It has been decided to have an event in the Autumn to thank all those who have worked so hard and supported the Hall. Details will be advertised nearer the time

### Church Fabric

We are pleased to say that the work on the nave roof has been completed there are again some photographs for the work to be found on the website. The final bill from the contractors for the work on the tower and the roof amounts to £51025.65 plus VAT. (We are able in due course to claim the VAT back for work on the actual church as it is a listed building). The architect's bill will be a further 12½% plus his expenses.

Now the contractors have finished we will start to close the car park gates in the evening.

### Electoral Roll.

This year the Church is renewing its electoral roll and all old lists will be cancelled. Please remember to complete your new electoral roll form if you have not already done so. They must be returned a week before the A.G.M. which this year is on 19<sup>th</sup> April. Being on the electoral roll entitles you to certain rights e.g. to vote at the A.G.M.

### House Groups

The house group courses of six weeks, to meet together, to learn from one another and to refresh our faith will meet at home of Dave & Marie Cove at on Monday evenings from 7 p.m. A second group will meet at 2 p.m. on Wednesdays commencing in April. If you would like to attend one of these short group meetings and cannot make either of these times please speak to the Vicar.

### Sponsor a cut

To date a total of £274 has been received to sponsor the cutting of the grass this year. If you would also like to contribute to the grass cutting please signify which month you wish to sponsor and send your donation to one of the wardens. The collection at the memorial service amounting to £183.30 was for the churchyard fund.

### Easter Flowers

If anyone wishes to make a donation towards the flowers and lilies used to decorate the church for Easter please put your donation on the plate provided in the Church or give your donation to Margaret Kimberley or one of the Wardens. It would be helpful if the money could be given by Palm Sunday (1<sup>st</sup> April) to enable the flowers to be ordered.

### Jam Jars

If anyone has clean 1lb (450g) jam jars with good screw lids that can be reused for marmalade please contact Margaret Antill•

### A note from Spring Hill Medical Centre.

In January 87 patients did not attend their appointments, many made on that same day!! As each appointment is allotted 10 minutes that is 14½ hours of doctors time wasted and staff are very concerned. This amount of lost time is not uncommon at other surgeries and you are asked to convey this message to others in the hope that this loss of expensive time to all is reduced. If this waste of time could be substantially reduced there would be more appointments available.

### Fair Trade Fortnight

This commences on 26<sup>th</sup> February and during the subsequent two weeks. It is a national event to try and promote more 'fair trade products. There are many more products available from bananas, chocolate, tea, coffee, honey, fruit juices etc. the list is expanding. Many of the shops have these products on their shelves. The Nuneaton Deanery representative is Mick Vincent Vicar of Stockingford.

### Apology

We apologise for the printing error in the February issue when part of the January edition was reproduced in error.



I couldn't believe it when the morning news programme said there was a suggestion that the Church of England should replace hymns in some services with 'Bono' music to attract more people to church. Admittedly Bono works hard for 'Make Poverty History' and previously for Famine in Africa and some of the words are inspiring, but no way could they replace our beautiful hymns and I don't believe it will attract people to church. It is more likely to drive older people away, but then I sometimes think someone says something and nothing ever comes of it, so it is probably one of these times.

Have you ever gone over a hump back bridge and felt your stomach jump. We used to go over the Clock Bridge at Hartshill to school and we nearly hit the roof rack if the bus was going fast. We were recently on the A5 in Leicestershire and we saw a road sign which was new to us - 'Concealed Summit', and lo and behold it was signalling a hump back bridge which over the years seems to have lost it's hump. There was no such sign at the Clock Bridge, but of course now there are traffic lights. No more beeping the horn and hoping a car wasn't coming the other way. I remember going fishing on the canal by the Clock Bridge and every what seemed like a few seconds someone would peep their horn. It was more like bedlam than a quiet country canal and I felt sorry for the people who lived nearby.

Also in Leicestershire we saw a sign on a road island asking for people to take up advertising space on road islands. As if there aren't enough distractions and signs for drivers without advertising posters on road islands.

Talk about advertising claims and the trades description act, we bought a different shampoo and the blurb on the back of the bottle claims 'You will want to leap out of bed and awaken your senses, leaving you minty fresh'. They must be joking at our age! It sounds to me like a shampoo thinking it's a toothpaste.

At the last Flower Festival I bought a Mexican Hat Plant out of curiosity as I had never seen one before. It was about 6" tall when I bought it and now it is more than 3 feet tall and still growing. It also self-sets tiny seedlings by the dozen as there are seeds all along each leaf which fall into the pot. I don't know how long we will be able to keep it inside as it will soon reach the top of the window.

A thought for March: 'Laughter is the sun that drives winter from the human face'.  
Victor Hugo.

Marie Cove.