

# Church of St. Laurence Magazine

Parish including Birchley Heath, Ansley Common  
Ansley Village, Church End

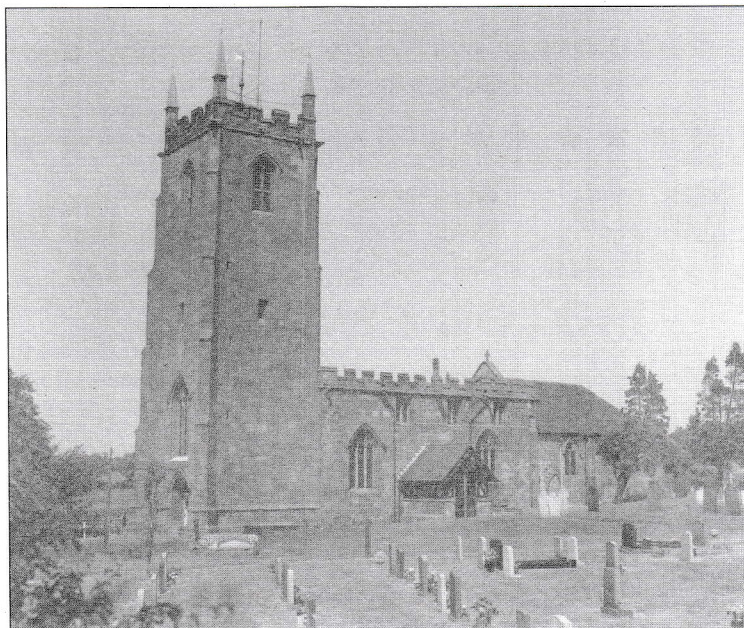
---

No: 957

MARCH 2005

Price 25p

---



Vicar:

REV. PETER ALLAN

Tel: 024 7639 9070

Wardens:

MARGARET ANTILL

Tel: 01827 874520

MOREEN FREESTONE

Tel: 024 7638 1833

St. Johns Leaders

DAVID & MARIE COVE

Tel: 024 7639 4114

---

**Print Centre 0800 389 4089**

## EASTER IS COMING!

The strange thing about Easter is we know it will come. We even know the date! Easter is early this year - March 27, to be precise. Of course the first disciples, though Jesus had tried to prepare them, did not anticipate the Resurrection. By contrast we prepare for Easter and can easily short-cut Lent and Holy Week altogether. I urge you not to do this. We are already half way through Lent and soon will come the quiet sombre reflections of Holy Week and then – and we shall only fully appreciate it if we take Holy Week seriously – comes the wonderful celebrations of Easter.

**Palm Sunday 20<sup>th</sup> March Palm Sunday Services at 10.30 a.m.**

Family Service at St. John's

Procession, Dramatic Reading and Holy Communion at St. Laurence

**Maundy Thursday 24<sup>th</sup> Communion and shared Meal** St. John's, Ansley Common 7.30 p.m.

**Good Friday 25<sup>th</sup> March** 7.30p.m. Quiet Hour at the Cross

**Easter Eve 26<sup>th</sup> March Service of First Light** (with Holy Communion)

8p.m. St. Michael's, New Arley. Following ancient tradition it is a service full of colour and activity. It will include a bonfire, processions, candles, sprinkling with water and the admission of several children to their First Communion.

**Easter Day 27<sup>th</sup> March 8 a.m. Holy Communion** St. Laurence

**10.30a.m. Joint Holy Communion** St. John's joins us at St. Laurence

**6.30a.m. Evensong** St. Laurence

It is really good to see all the hard work at St. John's bearing fruit with the new kitchen, activities every evening and the opening of the Krazy Kettle Kafe and I.T. every Tuesday morning. Well done to all who have worked so hard!

Thank you too to all who have responded so generously to the appeal to increase giving. Whilst the full results are not yet available, the replies were most encouraging. Thank You for this and for all you do in the service of our crucified and risen Lord.

Your friend and Vicar,

Peter

## March What's On

### St. Laurence's Church

Saturday 5 <sup>th</sup>		10.00 a.m. – 4.00p.m. Open Church
Sunday 6 <sup>th</sup>	Mothering	10.30 a.m. All Age Worship
	Sunday	6.30 p.m. B.C.P. Holy Communion
Sunday 13 <sup>th</sup>	Passion Sunday	10.30 a.m. Holy Communion
		6.30 p.m. Evensong
Sunday 20 <sup>th</sup>	Palm Sunday	10.30 a.m. All Age Worship
		6.30 p.m. Holy Communion
Friday 25 <sup>th</sup>	Good Friday	7.30 p.m. Special Service
Saturday 26 <sup>th</sup>		9.30 a.m. Decorating for Easter
Sunday 27 <sup>th</sup>	Easter Day	8.00 a.m. Holy Communion
		10.30 a.m. The Lord is Here Holy Communion
		6.30 p.m. Evensong

### St John's Hall Ansley Common Services

Wednesday 2 <sup>nd</sup>		9.00 a.m. Holy Communion
Sunday 6 <sup>th</sup>	Mothering	10.30 a.m. Family Worship & Sunday School
Sunday 13 <sup>th</sup>	Passion	10.30 a.m. Baptism, Holy Communion
Wednesday 16 <sup>th</sup>		9.00 a.m. Morning Prayer
Sunday 20 <sup>th</sup>	Palm Sunday	10.30 a.m. Family Worship
Wednesday 23 <sup>rd</sup>		9.00 a.m. Holy Week Service
Thursday	Maundy	7.30 p.m. Holy Communion
Sunday 27 <sup>th</sup>	Easter Day	10.30 a.m. Joint Service at St Laurence

### Other Activities at St. John's Church Hall

Mondays	7.30 p.m.	Indoor Bowls
Tuesdays	9.00 a.m.	Krazy Kettle Kafé & I.T. Classes
Tuesdays	7.30 p.m.	Line Dancing
Wednesdays	6.00 p.m.	A.C.Y.C.
Thursday 2 <sup>nd</sup> , 9 <sup>th</sup> & 16 <sup>th</sup>	7.00 p.m.	Youth Club
Friday 4 <sup>th</sup> , 11 <sup>th</sup> & 18 <sup>th</sup>	7.30 p.m.	Ball Room Dancing

### Activities at Village Church Hall

Monday 7 <sup>th</sup> 14 <sup>th</sup> & 21 <sup>st</sup>	7.00 p.m.	Links - Youth Club
Tuesday 8 <sup>th</sup> 15 <sup>th</sup> & 22 <sup>nd</sup>	10.00 a.m.	Senior Citizens
Wednesdays	10.30 – 12.30p.m.	Community Kafé
Wednesdays	1.30 p.m.	Little Angels - Parent & Toddlers
Wednesday 9 <sup>th</sup> & 23 <sup>rd</sup>	7.30 p.m.	Bingo
Thursday 10 <sup>th</sup>	7.30 p.m.	Parish Council Meeting
Thursday 17 <sup>th</sup>	7.30 p.m.	P.C.C.
Saturday 19 <sup>th</sup>	12.00 – 2.00	Community Kafé Table top sale

### Other Parish activities

Monday 7 <sup>th</sup> & 21 <sup>st</sup>	2.30 p.m.	Prayer Group meet 10 Nuthurst Crescent.
Wednesday 2 <sup>nd</sup> 16 <sup>th</sup> & 30 <sup>th</sup>	7.30 p.m.	Wednesday Fellowship meet 10 Nuthurst Cres.
Thursday 3 <sup>rd</sup> 17 <sup>th</sup> & 31 <sup>st</sup>	7.30 p.m.	Ansley Common Fellowship.

### From the Registers

#### Baptism.

On 13<sup>th</sup> February Thomas Dyson was baptised. Thomas was so very good, he looked round and gave such a lovely smiles especially when he was brought to meet everyone.



### **Funerals**

The funeral took place on Thursday 16<sup>th</sup> January at the Heart of England Crematorium of Ronald Martin loving husband of Janet and father of Rachel and Becky. He delighted in football, rugby, horse racing and gathering the family together on special occasions. He spent most of his working life in the building trade. His particular pride and joy was the part he played in construction of the Monkey House at Twycross Zoo.

### **Fred Terry**

The thanks giving service for the life of Fred Terry aged 90 took place on 26<sup>th</sup> January following a cremation service the previous day. Rev. Stan Marriott told of His life as a farmer in Ansley over many years, first at Slacks farm and then at Red House. Stan told of how Fred had permitted the Church to run barbecues at his farm to raise funds for the Church fabric and especially the contribution the barbecue committee made with the gift of one of the additional bells in 1978.

### **Thank you**

We thank the family and friends of Margaret Adkins for the £250 given in her memory towards the work to be carried out on the tower.

### **Mothering Sunday**

The Church will be open from 10 a.m. to 4 p.m. on Saturday 5<sup>th</sup> and refreshments will be available in the annexe.

There are usually many visitors to the Church Yard this weekend and we would like to invite everyone to come and spend a few minutes in the Church, and if time permits enjoy refreshments in the annexe. Everyone will be very welcome.

There will be posies given to the children of all ages at all three Sunday services as a token of love from Mother Church.

### **Holy Week & Easter**

#### **Palm Sunday**

Holy Week commences with Palm Sunday There will be 10.30 a.m. services reflecting on the Triumphal Entry and the coming Passion of our Lord both at St. Laurence & St. John's. With a service of Holy Communion at 6.30 p.m at St. Laurence. At all services palm crosses will be distributed.

There are services at St. Wilfrid's at 10 a.m. Monday, at St. Michael's 10 a.m. on Tuesday and St. John's 9 a.m. on Wednesday.

#### **Maundy Thursday**

At 7.30 p.m. there will be a celebration of the Last Supper at St John's when we will have a supper to eat before partaking in the breaking of the bread and sharing the wine.

#### **Good Friday**

Commencing at 7.30 p.m. there will be a special vigil in St. Laurence's Church with readings, hymns, meditations and prayers.

#### **Holy Saturday**

From 9.30 a.m. decorating will commence in Church. We would much appreciate help with the decorating and the cleaning, "many hands make light work". This year it is important that the work is finished in good time as there is a wedding in the afternoon. If you would like to make a donation in memory of a loved one or a contribution to the

cost of the Easter flowers please contact a member of the P.C.C. in good time as the lilies have to be ordered to be sure they can be obtained. Thank you.

#### **First Easter Service**

There is to be a service of First Light at St. Michael's at 8 p.m. on Saturday evening. This is open to everyone.

#### **EASTER DAY**

It will be at the Easter services that the young people now preparing to receive Holy Communion will receive their Communion. Please remember them in your prayers as they take this step forward in their journey of faith.

8.00 a.m. Book of Common Prayer Holy Communion

10.30 a.m. Joint service with St. John's Common Worship Holy Communion.

6.30 p.m. Festival Evensong.

The 10.30 service is joint with St John's partly to welcome those taking their first Communion to the altar rail and receive the bread & wine from the vicar. Also the Sunday School will be making an Easter garden to bring to Church.

If any one requires transport please have a word and it will be arranged.

#### **St. John's**

We are very pleased to say that the work in St. John's hall kitchen is now complete. In due course the tiles will be fitted to the new plaster and the rest of the area decorated. Then commenced the mammoth-cleaning job to get the hall ready for the Sunday service. Many thanks to everyone who came at the different times to get the hall and kitchen ready.

#### **Table Top Sale**

The Community Café will be holding a tabletop sale in the Village Church Hall on 19<sup>th</sup> March from 12-2 p.m. Tables are £5 each to book please telephone 01827 874520. Refreshments will be available and there will be a raffle. The people who run and regularly attend the café are anxious to raise funds to be spent on the hall improvements.

#### **Update on Suzie Wright**

Miraculously Suzie has no brain damage, even though she was medically dead for a while. However her latest problems are sight related. She had noticed her sight getting more blurred and cloudy, cataracts have formed on both eyes, and she has been referred to Great Ormond Street hospital for two separate operations under general anaesthetic. Suzie's other problems are psychological as she is having real problems seeing her friends again with her face being scarred. Julie is going to tutor Suzie at home with support from the school, but it is difficult to convince Suzie that she is not being left behind her classmates.

The message from Julie and her family is a huge "thank you" for all your support and prayers. It is such continued support that has given them the strength to deal with this together.

#### **2005 Calendars**

A total of £115 profit was made on the calendars featuring previous Flower Festivals. Many thanks to David and Margaret Oliver for the hard work involved. At the January P.C.C. meeting David offered to make some greeting cards featuring some of the photographs that he had taken at the flower festival. The proceeds of the calendars and the cards are to be for the fabric fund in view of the cost of the work to be carried out on the tower this year.

ANSLEY PARISH COUNCIL: Thanks to small Ansley Parish Footpaths Working Party and to W.C.C., the following footpaths are now walkable and way marked. New kissing gates replace some old and broken stiles:- Bungalows, Croft Mead to Tunnel Rd./Nuthurst Cres. Junction; Tunnel Road (oppo.Nuthurst Cres) to Park Lane, Nuneaton Rd.(Church End)to Ridge Lane(Via Ox Hayes Farm); Ansley Church to Ansley Mill(alongside Bourne Brook and Fish Ponds); Chip Shop, B'ham Rd., through to Gold Course.

Dog Fouling: Councillors have been advised that there has been a significant increase in the amount of dog foul deposited on Ansley Village Recreation Ground. Residents are reminded of potential health hazards and also general mess this causes and are kindly asked to clear up after their pets. Dog Warden who patrols the area will issue fixed penalty tickets.

Road Signs: New sign for Birchley Heath ordered. Unfortunately missing sign for Pipers End will not be replaced until after April of this year. Hazard warning signs at Church End have been replaced.

New Litter Bin: Has been ordered and should be installed shortly, located opposite Chip Shop, next to existing bend.

Next meetings: 10<sup>th</sup> March; 14<sup>th</sup> April; 12<sup>th</sup> May; 9<sup>th</sup> June.

-----

March 2005

I mentioned in my letter last month how many people never dress warmly, well, lo and behold, at the end of January we had a very cold spell and a stall in Nuneaton was selling gloves of all sizes like hot cakes. Then my Granddaughter asked me if I could knit her a woolly hat. It would seem that people were not prepared for cold weather after what had been relatively mild spell until then.

Isn't it strange that we go miles and visit Stately Homes, but my Granddaughter thought Arbury Hall was just a gateway, a drive and some woods. She couldn't believe there was a beautiful house filled with paintings etc. Perhaps local schools should take older children on a visit so that they can have a glimpse into their local history and heritage.

We must congratulate Nursery Hill School, Ansley Common, as their boys have won the George Eliot Hartshill 5-a-side football cup against very stiff opposition, and the girls' team came second in their competition. Well done Nursery Hill and well done Ruth Cove (their manager).

March is here with it's cold, cold wind, blowing the Daffodils and making trees sing.  
March is here but how welcome at last, as winter begins her final blast.  
March is for lots of lovely crispy days, mad March hares and longer days,  
March is here to show summer the way, so let's enjoy every blustery day.

Marie Cove.