

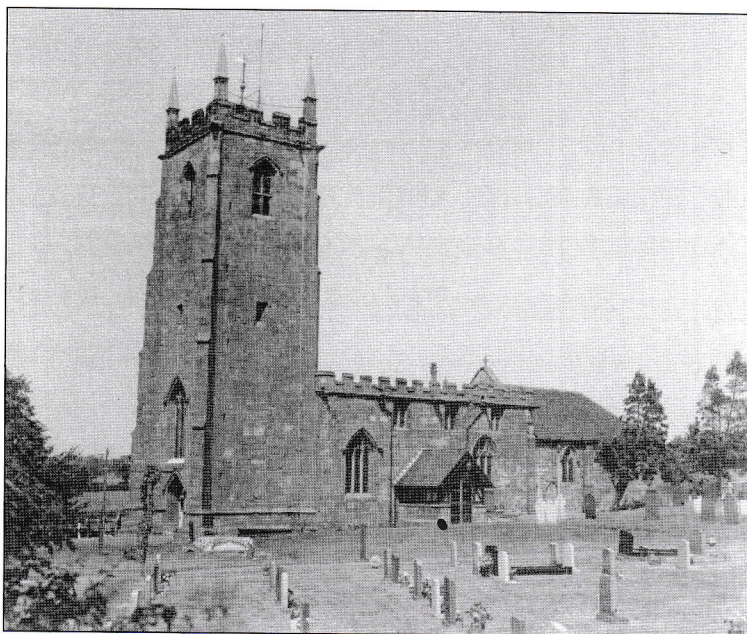
Church of St. Laurence Magazine

Parish including Birchley Heath, Ansley Common
Ansley Village, Church End

No: 1010

FEBRUARY 2010

Price 25p



Vicar:

REV. PETER ALLAN

Tel: 024 7639 9070

Wardens:

MARGARET ANTILL
MOREEN FREESTONE

Tel: 01827 874520
Tel: 024 7638 1833

St. Johns Leaders

DAVID & MARIE COVE

Tel: 024 7639 4114

Lay Reader:

MANDY WATTS
GWYNETH HICKMAN

Tel: 024 7639 7654
Tel: 024 7639 8901

www.ansleychurch.org

Print Centre 0800 389 4089

Looking back, looking forward

I sometimes wonder about what I will reflect upon when I look back on a lifetime's ministry. Regrets? Certainly. Mistakes? Probably. But I hope I will also think of good things. So what will be my pride and joy? Buildings transformed when I was Vicar (even when others did most of the work!). Yes. Changes to the lives of individuals and communities. I hope so!

But there will be something greater still – remembering those people who found faith in Jesus. Helping someone find faith in Jesus and seeing the difference it has made to their lives is one of life's greatest pleasures.

So I want to emphasise that now. In particular I want to encourage groups of people less well represented in our churches. I long that younger adults will find Jesus for themselves and that they in turn will share that joy with others. If you think you would like to join us we are starting an exploratory study about Jesus. This will begin with an informal supper on Monday 8 February at 7pm and from then on we continue weekly at 7.30pm. Please ask me for further details-without any obligation!

Or maybe you have been faithful in Jesus' service for many years but sometimes feel 'weary in well-doing' or that 'you have lost the love you had at first' or are simply seeking guidance to discover what God has in store, then there is something for you too. Please join the PCC and other church members on Thursday 25 February at 7.30pm. Over five meetings each Thursday until 25 March we shall be looking back with thanksgiving and forward in hope. You are all most welcome. We shall be meeting in the annexe and are looking forward to seeing you.

Let us pray that by God's Spirit we shall grow in faith, hope and love.

Your friend and Vicar,

Peter

February, St. Laurence's Church – Services

Sunday 7 th	2 nd before Lent	10.30 a.m.	Morning Worship
		4.00 p.m.	4 O'Clock Club Village Church Hall
		6.30 p.m.	Holy Communion
Sunday 14 th	Next before Lent	10.30 a.m.	Holy Communion
		6.30 p.m.	Evensong
Sunday 21 st	Lent 1	10.30 a.m.	All Age Worship
		6.30 p.m.	Holy Communion
Sunday 28 th	Lent 2	10.30 a.m.	Holy Communion
		6.30 p.m.	Evensong

St John's Church Hall Ansley Common Services

Sunday 7 th	2nd before Lent	10.30 a.m.	Family Service
Wednesday 10 th		9.15 a.m.	Holy Communion
Sunday 14 th	Next before Lent	10.30 a.m.	Holy Communion
Sunday 21 st	Lent 1	10.30 a.m.	Morning Worship
		4.00 p.m.	4 O' Clock Club
Wednesday 24 th		9.15 a.m.	Morning Prayer
Sunday 28 th	Lent 2	10.30 a.m.	Holy Communion

Discussing the parables Monday 1st - 7.30 p.m. 46 Nuthurst Crescent

Other regular activities

Full details on the notice boards.

From the Registers

Details next month

Ash Wednesday

As is our custom we have a joint service with Arley churches and also with the Methodists to commemorate the start of Lent when we consider our lives and remember the cost to Our Lord for our salvation. This year it is the turn for the service to be held at St. Wilfrid's Old Arley and will commence at 7.30 p.m. This year Ash Wednesday is 17th February.

Lent meetings

At the November meeting of the P.C.C. it was decided to have a series of meetings during Lent when there will be discussion each Thursday evening. These will commence on February 25th and will be held in the annexe commencing at 7.30 p.m. Everyone is invited to attend where ever you are on your journey you will be most welcome.

Church Flowers

When you enter the Church it is always good to see some flowers on the altar and in a few places around the building. These do however need to be provided and put into church. If you would like to provide or put flowers in Church at any time during the next twelve months please do say so. Any help is most welcome, you do not have to be an expert to put a few

flowers in Church, in memory of a loved one or perhaps an anniversary or even just to make the place look welcoming and loved.

St. Valentine's Dance

On Friday 12th February St. John's Hall Committee are organising a Valentine's Dance in St. John's Hall at 7.30 p.m. tickets are £1.50. (please bring your own food and drink)
As usual you will be ensured of a good fun social evening.

Table Top Sale

The Village Hall Committee are organising a table top sale in the Village Church Hall on Saturday 20th February commencing at 12 noon and finishing at 2p.m. The tables will cost £6 and any one wishing to book a table please contact Margaret Antill on 01827 874520. There will be refreshments available and proceeds are in aid of hall funds.

Women's World Day of Prayer

The day of prayer this year is Friday 5th March. Full details of the special service next month.

Grave stones

As you will be aware each year we are obliged to ensure that all the gravestones in the churchyard are safe, this will be carried out when the wreaths are removed on 15th February (weather permitting) or shortly after. This winter as you are fully aware has been particularly severe and as with many other things the frost does a lot of damage to gravestones, particularly the joints. Even if you have only recently had work done on a stone it is still liable to have been affected, unless there has been one of the new required poles put in the stone. If we find a stone is not in good order we will endeavour to contact as many next of kin as we can, but if you find a letter on the stone please contact the wardens and advise them of your course of action. It is important that the churchyard is kept safe for the many, many people who visit over the course of a year.

St. John's 'Soup and Sweet' Social

This was a very successful and enjoyable evening with over 30 people attending. Everyone had a good time and thoroughly enjoyed the food and entertainment. There is talk that there will be another next year, Look out for details. This event raised over £100 for the hall funds, which means that we now have sufficient money to meet all the commitments for the building work and running costs for the first few months. Having met our commitments it will enable future fundraising events to provide for things that the hall would like such as new notice boards and an instantaneous hot water unit for making drinks.

Christmas Tree Festival

These quotes from our visitor's book speak for themselves as to what people thought of our 4th Christmas Tree Festival. -

"Beautiful, a lot of work. Thank You"

"Very imaginative and lovely"

"Very impressive and much appreciated"

"Loved all the trees"

"Lots of thought and work, beautiful as usual"

"Lovely (Tree mendous)"

"This display of Christmas trees is a credit to the people of Ansley"

"What a beautiful idea. We appreciate all the hard work involved. Thank you."

"What a wonderful display of the season." "A lovely idea. Well worth a visit."

We were particularly busy the first weekend, but the weather was much colder the second and we were not so busy on the Sunday. However we made a total of £1784 of which £180 has been sent to the Northamptonshire and Warwickshire Air Ambulance. There was a further £158 for the Churchyard Fund from the stars on the Memory Tree. We had a wonderful event, which was enjoyed by many people. Thank you to everyone who helped and supported in any way.

The Christmas Cake raffle was won by Mr Glyn of Coleshill who was particularly delighted as his wife had not made one for Christmas.

Jane Kimberley's Concert

At short notice Jane Kimberley put on a concert with her many friends and pupils on Friday 18th December in the church. This was a lovely setting with all the trees around. The music was as always to a very high standard even though they had to keep their instruments under blankets with hot water bottles because of the cold weather. The donations given were added to the Christmas Tree Festival funds. Thank you to everyone especially Jane and her fellow flautists for a very enjoyable evening.

Weather

Because of the severe weather, several services in January were cancelled, the P.C.C. apologise for any inconvenience caused. If you missed your January magazine because of this there will be some kept on one side to ensure you do not miss out. If you would like to receive the magazine regularly please do contact Marie Cove 024 7639 4114 It will cost £3.00 for the year and be delivered free to all residents in Ansley. However it can be posted each month, but an extra £4.00 is charged per year to cover the cost of postage.

'From tiny acorns mighty oaks do grow'. •

The total paid into our Fabric Fund in December was £39.00, increasing the total to £768.50 all from the small change collection. Thank you to everyone who contributed. This is a wonderful total for the year and as mentioned last month the tins will continue to be in Church.

Jam Jars

If anyone has any clean jam jars with good fitting lids particularly 1lb jars please do let Margaret Antill know as she is running short. The marmalade that is sold goes towards the advertising and the purchase of flowers for the Flower Festival

Prayer Requests

If you would like someone or a particular situation remembered in prayer at our Sunday Services both at St. Laurence and St. John's please hand the slip below to a member of the Church Congregation or contact the Vicar on 024 7639 9070. Please remember the vicar would be pleased to visit anyone who is sick, but he does need to know, again please ring.

Please pray forwho is

February, 2010

When I was reading 'Larkrise to Candleford' again, the authoress mentioned how the village loved casual visitors, such as tinkers, and it reminded me of when we were small, the world seemed very much smaller in those days - no television and only Geography at school to teach us about other places of the world, or other people. We too had a knife grinder who came round and a turbaned coloured man who sold all sorts of items from a large suitcase. It was fascinating to us children as we had only ever seen coloured people in films - like our favourite 'Sabu'. We got so excited and we also liked to open the door to the milk lady, Hilda, who doled out the milk into Mam's jugs. She had huge churns in her cart, but I always remember her as being a pretty, jolly lady with dark curly hair and a ready smile. She certainly provided service with a smile, and was always our most welcome visitor, as our mother let us get a cup and scoop some cream from the top of the jug.

If you ever had a nose bleed as a child, you would probably remember your mother or father finding the largest key they could find, which wasn't hard in those days, and putting it down your back. You might have wondered at the time 'what on earth can a key do to cure a nose bleed'?. Well, it seems that it wasn't as daft as it seemed at the time, as applying an ice pack to the back of the neck is also regarded as very affective. Nobody understands why it works, but the theory is that the blood vessels in the head are caused to constrict because of the cold, and the same may happen to the blood vessels in the nose. So, it may have all seemed just another bit of superstitious nonsense at the time, but perhaps not.

During the snow last month it was wonderful to see so many youngster and parents sledging down the banks in Galley Common. It quite uplifted us as being of the older generation we could only see the snow as being horrible. It kept us oldies indoors as we were afraid of slipping on icy pavements, but seeing the children and their parents enjoying the copious amounts of snow, made the weather not so bad after all. Could people who remembered Galley Common years ago have foreseen the slag heaps of the Tunnel Pit transformed into green banks with a play area for summer and used for sledging in the winter.

It is amazing, however, how versatile the British people are. As soon as the sun shines out come the T-shirts, then it rains and everybody has a brolly and when the snow comes out come the sledges, gloves, hats and scarves. In January Galley Common was certainly turned into a little Switzerland and snowmen sprouted like mushrooms all over our village. What a sight!

Perhaps February will live up to it's reputation and bring rain instead of snow, not that I want to be a kill joy.

February brings the rain, swells the frozen dikes again.

Marie Cove.,