

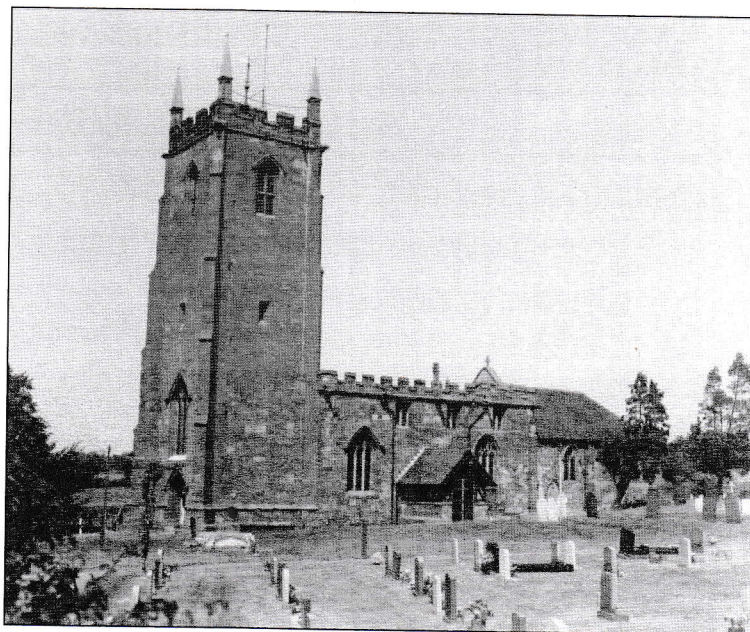
Church of St. Laurence Magazine

Parish including Birchley Heath, Ansley Common
Ansley Village, Church End

No: 1000

FEBRUARY 2009

Price 25p



Vicar:

REV. PETER ALLAN

Tel: 024 7639 9070

Wardens:

MARGARET ANTILL

Tel: 01827 874520

MOREEN FREESTONE

Tel: 024 7638 1833

St. Johns Leaders

DAVID & MARIE COVE

Tel: 024 7639 4114

Lay Reader:

MANDY WATTS

Tel: 024 7639 7654

GWYNETH HICKMAN

Tel: 024 7639 8901

www.ansleychurch.org

Print Centre 0800 389 4089

Building the People of God

'Come as living stones and be built into a spiritual temple..' so wrote St. Peter in his first letter (1 Peter 2:5)

As the year begins we look forward to the renovation and extension of St. John's Hall in Ansley Common and further restoration work at St. Laurence's. This is addition to the modernisation of the Village Church Hall and the work already completed at the church. It has been a huge undertaking, the result of a lot of prayer and hard work. Thank You to all who have made this possible.

I believe that this work is truly of God but the greatest work is still to come - using each of our buildings to share God's love in word and action or as St. Peter puts it 'to proclaim the wonderful acts of God.' (1 Peter 2:9).

As these buildings are being extended and restored let us seek to use the time to build ourselves. You could call it not so much body building as soul building.

May I suggest some ways of doing this?

Seek help and healing through the Laying on of Hands. From March we shall be restoring this opportunity on the 2nd Sunday of each month.

Take part in the Study Course on Monday nights in February and March entitled 'Understanding the Bible.' It will be led by Richard Cooke. Few have his gift of portraying difficult things simply and memorably.

Join the Confirmation group on Tuesday nights perhaps as a Refresher Course.

Make a commitment to read the whole of the Bible in the coming year. I recommend you all to join me - or should I say we need to support each other? I am following 'Cover to Cover' compiled by Selwyn Hughes which takes the Bible in chronological order. You may simply prefer to start at Genesis 1. Whichever your approach why not resolve that by Ash Wednesday next year you have read the entire Bible. If you do a bit each day it's not the huge undertaking you might expect.

Consider a Quiet Weekend Retreat. Maybe we might organise one as a parish or with other parishes?

Whichever method you use I am very happy to help and advise.

We're making our buildings strong, serviceable and fit for purpose. We need to do the same for ourselves.

Your Friend and Vicar,
Peter

February, St. Laurence's Church – Services

Sunday 1 st	Candlemas	10.30 a.m.	Special joint service
		4.00 p.m.	Family Service in Village Church Hall
		6.30 p.m.	Holy Communion
Sunday 8 th	3 rd before Lent	10.30 a.m.	Holy Communion
		6.30 p.m.	Evensong
Sunday 15 th	2 nd before Lent	10.30 a.m.	Morning Prayer
		6.30 p.m.	Holy Communion
Sunday 22 nd	Next before Lent	10.30 a.m.	Holy Communion
		6.30 p.m.	Evensong
Wednesday 25 th	Ash Wednesday	7.30 p.m.	Special Service

St John's Church Hall Ansley Common Services

Please note All Services will be held at the centre St. John's Close until the work on the hall has been completed

Sunday 1 st	Candlemas	10.30 a.m.	Special Joint service at St. Laurence
Sunday 8 th	3 rd before Lent	10.30 a.m.	Holy Communion
Sunday 15 th	2 nd before Lent	10.30 a.m.	Family Service
Sunday 22 nd	Next before Lent	10.30 a.m.	Holy Communion

Other regular activities

Full details on the notice boards. No activities will be taking place in St. John's Hall until the refurbishment is complete.

From the Registers

Wedding

On a cold, but bright Saturday 3rd January Martin Price and Sharon Lawrie were married at St. Laurence's church, and one of their guests who was a bell ringer, joined in the ringing.

Funeral

At her funeral at St. Laurence's on 18 December, prior to the committal at Heart of England Crematorium, we gave thanks for Anne Phillips' life of love. A lady of character and courage, laughter and love she was deeply devoted to her husband Michael, to all her family and to her many friends. She will be sadly missed.

Thank you

The P.C.C. are very grateful to the family and friends of Jim Ashton for the very generous donations of £265 which have been given in his memory in aid of the Churchyard Fund.

The P.C.C. are also grateful to Ms. Freda Kimmey from Euston Texas U.S.A. via her friend in the U.K. for the donation of £10 to the Fabric Fund

Also thank you to the Jackson family for their very generous donation of £193 to the Village Church Hall

Ash Wednesday

This year the start of Lent is Wednesday 25th February and there will be a special

Communion Service combined as usual with Arley at St. Laurence's at 7.30 p.m. (If the building work is underway and the Church not in a fit state the Annexe will be used).

Women's World Day of Prayer,

Advanced notice for you diary March 6th special service at St. Laurence more details next month.

'From tiny acorns mighty oaks do grow'.

Please remember the small change collections we are having each month this year in aid of the Church Fabric Fund.

The Church Fabric

After months of planning the repairs to the church outlined in the July 2008 magazine are due to start early this month and it is anticipated the work will be completed by May. It is hoped that the church will remain in use for services while the work is being carried out, and every effort will be made to keep things running smoothly. However it will only be possible to clean on a Saturday once the dust has had time to settle overnight offers of extra help would be much appreciated. It is intended that we just Hoover the floor area and wipe the surfaces (no brushes to prevent the dust rising) we will not be putting the aisle carpets back each week nor will we be cleaning any more than is necessary. If the church is not in a fit state on a particular week then the services will be moved to the annexe. There will inevitably be the "big clean" at the end.

Just when the contractor will be working inside will be very dependant on the weather and it will be up to him to decide which area of the church he will be working in at any one time. If you are in a position to help any Saturday in the next few months please let either one of the wardens or Margaret Kimberley know. Any offers would be much appreciated.

St. John's

As with many such projects when you think you have a start date further problems occur and the best of plans have to be delayed. By the beginning of December it was clear that the work could not commence before the expiration of the planning permission and with the revised plans in place an application was submitted to the Council and renewed permission has now been received. There have also been some delays with the funding paperwork and the completion of the contracts required by three of the funders. At the time of writing two of these contracts have been completed and the third is well on its way. Lets hope and pray further progress will have been made by next month.

Following advice from the North Warwickshire CVS an application was submitted to the Trustees of the Christmas Wishes Campaign of the Mercian Trust for a contribution towards the purchase of new door mats for the hall. The Trust is administered by the Coventry Evening Telegraph and West Bromwich Building Society and we are delighted to report that £100 has been received. We express our thanks to the Trustees for this generous donation.

Table Top Sale

A table top sale has been organised by the Village Church Hall Committee on Saturday 21st February from 12.00-2.00 p.m. To book a table please telephone Margaret Antill on 01827 874520 tables are £6 each. Refreshments will be available.

Christmas Reports

Even at the time of writing Christmas seems a long time ago. The different events provided a wonderful time of fellowship, bringing people from the different parts of our area together to make new and renew old friendships. It also provided a time for the true meaning of Christmas to touch our hearts

The Christmas Tree Festival was one such event, so many people commented on the sense of the united atmosphere, the hard work, time and attention to detail that was so evident in the many trees. This very happy event over the two weekends raised £1,540 for church funds and a further £183 for the Churchyard Fund from the stars on the memory tree. The Christmas cake that was raffled was won by a lady from Galley Common.

On the 19th the donations of £165 received at the very enjoyable Fizzy Flutes musical concert performed by Jane Kimberley and her pupils contributed to the above total.

Many thanks to the many who helped setting up, during and clearing up for this festival the joint effort of so many created a wonderful atmosphere, as our architect said Ansley is a 'People Church' let us hope and pray that this will continue to be the feeling when people from outside come into Ansley.

The young children at the Christmas 4 o' clock club service were very taken by the crib that had been put in the hall and one little girl sat very still sitting on the donkey (not real).

The Christmas Flame Service on the 14th was much appreciated by all who attended and especially those with children, who waited patiently for the pieces to be handed out and then put together as part of their Christingle. It was lovely to see so many of the leaflets coloured in and returned and these were put around the altar rail until the Communion Services.

The very popular traditional service of Nine Lessons and Carols, which brought the Christmas Tree Festival to a close, was much appreciated by all those who attended. The Christmas Eve Communion Services were somewhat different to those planned, St. John's were happy to help out by having Communion by Extension and the Midnight service welcomed Rev. Ruth Walker who stepped in as the Vicar was ill that day. The Christmas Morning service brought a wonderful Christmas preparation to a lovely fitting end.

Very many thanks are due to the many people who assisted with the planning and during the various services some at very short notice.

Stressful Times

In these difficult financial and stressful times please remember that we are always here for you, should you be in need of a confidential listening ear.

Prayer Requests

If you would like someone or a particular situation remembered in prayer at our Sunday Services both at St. Laurence and St. John's please hand the slip below to a member of the Church Congregation or contact the Vicar on 024 7639 9070. Please remember the vicar would be pleased to visit anyone who is sick, but he does need to know, again please ring.

Please pray forwho is

February, 2009.

It doesn't seem five minutes since we were all looking forward to Christmas. Now the shops are filling up with Easter Eggs, even though we still have a way to go before Easter. The nights are getting a little lighter and the bulbs are peeping through.

Big Ben (the great clock of London) is now 150 years old. At the start of 2009 a leap second was lost due to the earth slowing down. You would imagine that this could be altered by computer or some complicated mechanism, but no the weight is changed by taking off an old Penny. How simple and how marvellous for a such a world famous iconic clock.

I had to laugh when I read that a 20 year old woman went to buy knitting needles to make a scarf. She was asked her age and then was told she couldn't buy knitting needles until she was 21 years old. I could hardly believe it as we were knitting at school at 7 years old, but all our family, including my 2 brothers could knit at 5 years old. I thought it was hilarious as I have just taught my 6 year old granddaughter to knit and sent her home with a pair of needles and wool, until she had a knitting set for Christmas.

As I saw the variety of Christmas presents received by all our grandchildren including some very expensive, I remembered one of our favourites (shared by my younger sister and I) was a 'Sweet Shop'. Apart from the fact that I had a sweet tooth and sweets were in short supply, it was great. It had little boxes of sweets, cardboard money and a small till and my Dad got us a set of small weighing scales with real weights. We absolutely loved it and when the boxes were empty our Mam filled them up with raisins and currants, and it gave us many happy hours of enjoyment. I wonder what today's children would make of it, but perhaps it wouldn't be politically correct to have a 'Sweet Shop'.

At the end of last Summer a T.V. gardener advised not to deadhead at the end of the season to leave food for the birds. We did this, and although the garden looks messy, we have been rewarded with a garden full of a variety of birds. One day we had a whole flock of Goldfinches feeding on the seed heads, so the advice was worthwhile.

February we welcome you, as shoots of green come peeping through.
The Catkins are hanging like jewels fair, company for the Ivy who is always there.

The birds are hungry each and every morn, but they know Spring will very soon dawn.

So February we welcome you now, as does every bird on every bough.

Marie Cove.