

# Church of St. Laurence Magazine

Parish including Birchley Heath, Ansley Common  
Ansley Village, Church End

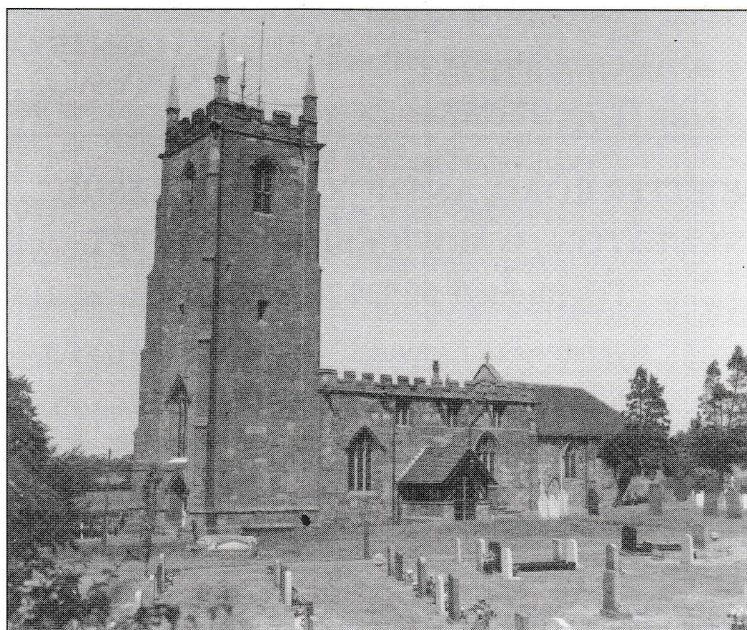
---

No: 991

FEBRUARY 2008

Price 25p

---



Vicar:

REV. PETER ALLAN

Tel: 024 7639 9070

Wardens:

MARGARET ANTILL  
MOREEN FREESTONE

Tel: 01827 874520

Tel: 024 7638 1833

St. Johns Leaders

DAVID & MARIE COVE

Tel: 024 7639 4114

Lay Reader:

MANDY WATTS  
GWYNETH HICKMAN

Tel: 024 7639 7654

Tel: 024 7639 8901

**[www.ansleychurch.org](http://www.ansleychurch.org)**

---

**Print Centre 0800 389 4089**

Why will the vicar be off for three months?

From Easter Day for three months I shall be taking a sabbatical. After nearly 25 years in ordained ministry it seems good to take a break, to reflect and refresh myself. It will be time to take life at a quieter pace. I hope to travel, go on retreat and also to do some study. I intend to visit a number of churches that are growing and developing to see how they function. I am very aware that I was trained in a very different generation and I have some catching up to do!

I will be back to work on Friday June 27.

My hope is that church life will carry on as undisturbed as possible - indeed I hope it will be a creative time for you as well. Most of the Sunday services I take together with baptisms, weddings and funerals will be taken by Barry Jacques, until recently Curate of Weddington and Caldecote. Mandy Watts will continue to be available for funerals where requested. Mandy and Gwyneth Hickman will take communion to the housebound. Advice on other matters will be available from the churchwardens. A list of appropriate numbers to contact will appear in all editions of our magazine from March to June. In advance, I will continue to write the editorials for the magazine ( I would not want you to forget me entirely!) .

May I take this opportunity to thank the PCC for being supportive of my request for a sabbatical and hope that it will prove a blessing not just for me but for you all.

Your friend and vicar,

Peter

### January St. Laurence's Church - Services

Sunday 3rd	Candlemas	10.30 a.m.	Joint at St. John's
		4.00 p.m.	Family Service in Village Church Hall
		6.30 p.m.	Holy Communion & Ministry of Healing
Sunday 10th	Lent 1	10.30 a.m.	Holy Communion & Ministry of Healing
		6.30 p.m.	Evensong
Sunday 17th	Lent 2	10.30 a.m.	Morning Prayer
		6.30 p.m.	Holy Communion & Ministry of Healing
Sunday 24th	Lent 3	10.30 a.m.	Holy Communion
		6.30 p.m.	Evensong

### St John's Church Hall Ansley Common Services

Sunday 3rd	Candlemas	10.30 a.m.	Special joint service
Wednesday 6th	Ash Wednesday	9.00 a.m.	Morning Prayer
Sunday 10th	Lent 1	10.30 a.m.	Holy Communion
Sunday 17th	Lent 2	10.30 a.m.	Family service
Wednesday 20th		9.00 a.m.	Holy Communion
Sunday 24th	Lent 3	10.00 p.m.	Holy Communion

### Other regular activities

Full details on the notice boards

### From the Registers

#### Funerals

It is with great sadness that we mark the funeral of Bryan Parker 'Perce' (61 years) at the Heart of England Crematorium on 27th December. Perce lived in Arley and Ansley for most of his married life; Most of his working life was spent at Jaguar, and latterly at Corley Services.

Perce fought his illness bravely, undergoing painful treatments in the hope that he would live to see his first grandchild due in April. Perce will be sadly missed by all his family and friends, and especially by his wife Pat and daughters Lisa and Lyndsay.

The funeral of Roger Brandrick took place at St. Laurence's on 10th January followed by burial in the churchyard. Renowned for his amazing sense of humour and his ability to master any task he turned his hand to. Roger is deeply missed by his family and many friends.

The funeral of John Woodward took place at the Heart of England Crematorium on 17th January. John spent most of his life in Weddington and New Arley, and appreciated his final years in Ansley Common. A mechanic by trade, John used his skills to benefit many. He is deeply missed by his wife Margaret and all his family.

### Ash Wednesday

This year Ash Wednesday falls on February 6th (almost as early as possible) as usual there will be a combined Communion service for both parishes which this year will be at St. Michael's New Arley at 7.30 p.m.

### Women's World Day of Prayer

Women across the world join together to pray for its needs annually on the first Friday of



March, each year it is on Friday 7th March. The order of service is prepared by Christian women from different countries in turn. This year it is the Christian women from Guyana. In the British Isles there will be over 6,000 prayer services in different places, bringing together women, men and young people from every background and denomination. This year I would like to introduce the Women's World Day of Prayer to our Benefice of Ansley and Arley. The service will be held in St. Laurence's Church Ansley on Friday 7th March, 7.30 p.m. All are welcome from the Benefice as well as other denominations. The service looks to be quite interesting and exciting. I do hope you will come and support this venture and come and pray for the world and its needs knowing that at the same time and day other people from all over the world will be doing the same.

I am also looking for volunteers from all the churches to read parts or help out in some way. If you would like to do this please contact me on Tel 104.7639 8901 as you can Gwyneth Hickman (Reader at St. Laurence Ansley)

#### Table Top Sale

On Saturday 23rd there will be a table top sale in the Village Church hall between 12 noon and 2.p.m. The cost of the tables will be £5 each and anyone wishing to book a table please contact Margaret Antill on 01827 874520.

#### Valentine's Dance

On Friday February 15th at 7 p.m. there will be a Valentine's Dance at St. John's Church Hall. Admission/ tickets £2. Please bring your food, tea and coffee will be included. There will be a raffle and lots of fun.

#### St. John's Carol singing for Child line.

The people from St. John's congregation went carol singing in December when the weather was very cold however they had great fun and a total of £51.20 was raised and this has been forwarded as last year to the charity 'Child Line'.

#### Thank you

We are very grateful to the Harrison family for the very generous donation to St. John's of a beautiful jug suitable for use at baptisms.

We are also very grateful to the Jackson family who held a raffle at their New Year's Eve party and raised £160 which they have very generously given for church funds.

The Ceilidh organised in the Village Church Hall by Pat and David Arrowsmith was great fun and enjoyed by the many who attended. The proceeds amounting to £160 were added to the Christmas Tree Festival Funds.

#### Christmas Tree Festival

How wonderful to see the Church again decked with 60 Christmas Trees with so many different titles. The amount of time and effort put in by everyone was tremendous, many had beautiful hand made decorations, but all were thought provoking.

Over the two weekends and with a concert by Jane Kimberley's pupils and the Ceilidh in the Village Church Hall we made a total of £1480. This has been split between the Warwickshire & Northamptonshire Air Ambulance £520, the church fabric fund £520 and the general fund £440. There was also £195 for the churchyard fund from the stars on the memory tree.

Over the duration of the event and including Christmas Day we read a few of the 81 prayers placed on the prayer tree at each service ensuring that each one was brought to God.

Thank you to the many people who contributed to this event in any way to make it such a wonderful community event. – We have already had requests for trees for the 2008 festival.

#### Sponsor a cut

If anyone would like to sponsor the cutting of the grass in the Churchyard this year please complete an envelope with the month being sponsored enclosing your donation and return it to one of the wardens. Perhaps you may like to do this in memory of a loved one, or just to help keep the Churchyard looking as tidy as possible. Please remember we will spend £250 each time the grass is cut.

#### The Old School & Ansley Senior Citizens

Every five or six weeks during term time the children of The Old School at Church End entertain and provide refreshments for the members of Ansley Senior Citizens in the Annexe. The Senior Citizens enjoy being politely waited on by the children and their school cooking. The children also enjoy interacting with the 'older' generation. Anyone wishing to join the group would be most welcome details are available from the Church Wardens.

#### The Village Church Hall

We have been fortunate to receive a grant from the Heart of England Community Foundation for £3,852. Over the Christmas holiday we have had the floor sanded and varnished. This has made a great difference to the halls appearance and will be much better for the children at the various Sure Start activities. We have also had a water heater fitted in the kitchen which will save the use of the old urn and the consequential steam in the kitchen.

#### Update

We have recently had good news of Susie Wright, who as a 10 year old in October 2004 sustained such horrendous injuries in Mexico as a result of an accident caused by hurricane damage. Many will remember the concert which raised £760 which helped her family with fees at the time. Now, after numerous operations, skin grafts etc, the hole in her head has been finally closed and healed and she once again has a full head of hair. Thank you to all who contributed and let us thank God for this wonderful news.

#### Prayer Requests

If you would like someone or a particular situation remembered in prayer at our Sunday Services both at St. Laurence and St. John's please hand the slip below to a member of the Church Congregation or contact the Vicar on 024 7639 9070. Please remember the vicar would be pleased to visit anyone who is sick, but he does need to know again please ring.

-----  
Please pray for .....who is .....



Have you heard of grazing - not animals but referring to people who eat food (not paid for) as they walk around the store. I just couldn't believe how dishonest people can be. I have seen mothers open up packets of sweets or crisps, but always hoped they took the empty packet to go through the checkout. Even this I find unacceptable, but it seems the supermarkets are losing millions of pounds a year from people eating food which they haven't paid for.

Did you know that Warwickshire sent 18,700 shoe boxes in 2007? What an achievement and we in Ansley should be happy to have played our small part in this operation.

There is so much in magazines, newspapers and the media in general about 'age'. It appears that 70 is the new 40. The powers that be don't think women should grow old gracefully, but one man said 'What a dull world this would be if every woman in her 50's, 60's and 70's only looked 30ish. I have never thought it important to look younger than your age, but what I like is feeling young inside and the best remedy for old age is to be with younger people - babies, toddlers, schoolchildren, teenagers and believe me their energy and their zest for life rubs off. You may feel completely shattered after spending time with them, but it brings contentment and a warm glow inside.

Have you noticed as women grow older they grow more like their own mothers. As I watch the growing mass of ornaments, photos and plants in our house, I can remember thinking years ago 'I won't accumulate things like my mother did; they are only dust collectors. However, if anything I am worse. Each photograph is special, each ornament holds a memory and the plants are a way of life, and I even get pleasure out of dusting them.

If I could live my life again, what changes would I make.  
Perhaps I'd be a career girl, and posh cars and holidays take.  
Perhaps I'd go abroad to live and soak up the warming sun  
Or even wish the lottery millions I could have won.

No, if I could live my life again, no changes would I make.  
No career or cars or holidays, could the place of home and family take.  
I wouldn't wish to go abroad to live - no England is my home.  
And lottery millions could not buy the love and care bestowed.

Marie Cove.