

# Church of St. Laurence Magazine

Parish including Birchley Heath, Ansley Common  
Ansley Village, Church End

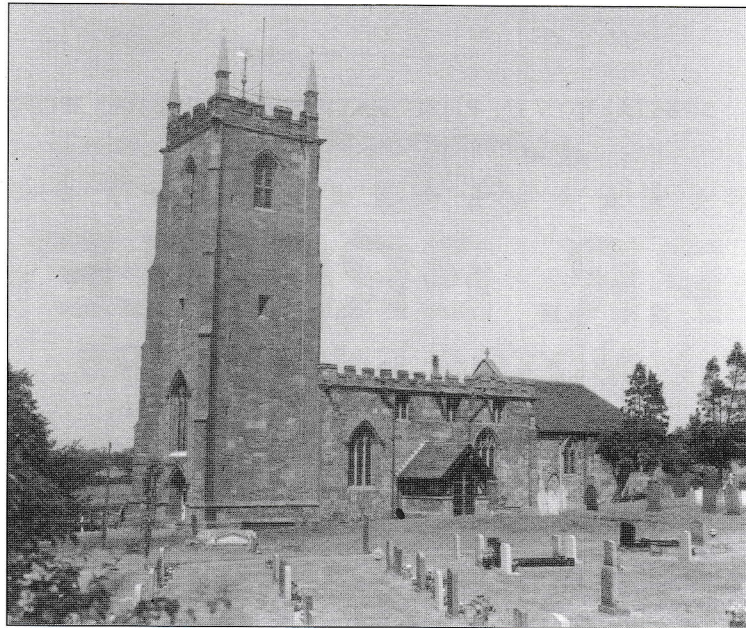
---

No: 980

FEBRUARY 2007

Price 25p

---



Vicar:

REV. PETER ALLAN

Tel: 024 7639 9070

Wardens:

MARGARET ANTILL

Tel: 01827 874520

MOREEN FREESTONE

Tel: 024 7638 1833

St. Johns Leaders

DAVID & MARIE COVE

Tel: 024 7639 4114

Lay Reader:

MANDY WATTS

Tel: 024 7639 7654

**[www.ansleychurch.org](http://www.ansleychurch.org)**

---

**Print Centre 0800 389 4089**

## Time to receive

Over the past three years plus, I have celebrated with you so many new things in the life of Ansley Church- the rejuvenation of the Church Hall (now nearing completion), the establishment of the Ley Group Young People's Project (which has already made a significant difference to the lives of our young people), the work on the church building, the improvements at St. John's Hall, St. John's having weekly rather than fortnightly services, the start of our 4 o'clock Family Church, the launch of Ansley news and of our web-site -to name but a few. I would like to say '**Thank You**' to all who have given so freely of time and energy to make all this possible. It is truly a great achievement.

**Yet as we give so we need to receive.** So I want to make the next six months a Time to Celebrate and a Time to Receive. It's a way of saying Thank you to you all who have given so much in a wide variety of ways to church and community. It's a way of drinking deeply of the love of Christ.

### First: **The Away Day.**

Many have spoken of how helpful days away have proved in the life of St. Laurence's Church. So we are re-introducing them. Our visiting speaker this year will be Bishop John, Bishop of Warwick. The theme will be Healing. The date will be Saturday 28 April. (Details of exact times and venue will appear in the March magazine). Bishop John has a real heart for the ministry of healing. Those who have heard him will know that he speaks simply yet with immense wisdom and sensitivity. Do come if you can. All are welcome.

### Second: **The Groups.**

There be two opportunities to meet together to learn from one another and to refresh our faith.

1 Lent. Ash Wednesday to Easter leading to the renewal of our baptism promises on Easter Eve at St. Michael's OR

2 Easter to Pentecost leading to the renewal of baptism promises at the Deanery Confirmation on May 26.

I hope the courses of around six weeks will be at different times and different parts of the parish. I intend to plan the courses myself and base them on Jesus' manifesto: Luke 4 16-21.

**Thank You for all you have done, all you have given. Come and receive. Come to delight in the God who longs to give you so much,**

Your friend and vicar,

Peter

### St. Laurence's Church - Services

Sunday 4 <sup>th</sup>	3 <sup>rd</sup> before Lent	10.30 a.m.	Morning Worship
		4.00 p.m.	Family Service
		6.30 p.m.	Holy Communion & Ministry of Healing
Sunday 11 <sup>th</sup>	2 <sup>nd</sup> before Lent	10.30 a.m.	Holy Communion & Ministry of Healing
		6.30 p.m.	Evensong
Sunday 18 <sup>th</sup>	Next before Lent	10.30 a.m.	Morning Worship
		6.30 p.m.	Holy Communion & Ministry of Healing
Wednesday 21 <sup>st</sup>	Ash Wednesday	7.30 p.m.	Special Service
Sunday 25 <sup>th</sup>	Lent 1	10.30 a.m.	Holy Communion
		6.30 p.m.	Evensong

### St John's Church Hall Ansley Common Services

Sunday 4 <sup>th</sup>	3 <sup>rd</sup> before Lent	10.30 a.m.	Family Service & Sunday School
Sunday 11 <sup>th</sup>	2 <sup>nd</sup> before Lent	10.30 a.m.	Holy Communion.
Sunday 18 <sup>th</sup>	Next before Lent	10.30 a.m.	Family Service
Sunday 25 <sup>th</sup>	Lent 1	10.00 p.m.	Holy Communion & Sunday School

### Other regular activities

These continue as normal full details on the notice boards.

### From the Registers

#### Funerals

The funeral of (Violet) Rose Hollings took place at St. Laurence's on 20<sup>th</sup> December followed by cremation and interment at Stockingford Cemetery. With eight sisters (and no brothers) at a young age, she was nicknamed 'Bill'. She was an avid walker and cyclist and a hard worker. She took exceptional pride in all she did and made especially men's trousers! Committed to her faith and her family she will leave a great legacy of love to all who knew her well and mourn her passing.

It was with much sadness that we learnt of the sudden death of Tim Gouldstone in November. He was vicar of Ansley from 1980 to 1985. He came to Ansley at a difficult time following a long interregnum and is remembered for his pastoral work. He was the first vicar to live in our current vicarage and he did much research into the history of Ansley during his time in the parish. We extend our sympathy to his wife Jane and family.

#### Olive Allton

The P.C.C. would like to thank the family and friends of Olive for their generous donations to the Church £393.95 and to the Village Church Hall £429.15 (It is due to problems with the postage of these donations that it has taken so long before this acknowledgement could be made)

#### St. John's

The Christmas Evening held in St. John's on Friday 8<sup>th</sup> December was enjoyed by all those who attended. A total of £77 was raised at this social and we thank all those who helped organise and prepare for this event.

The proceeds of the carol singing with the collection from the morning service on 24<sup>th</sup> December amounted to £74.02 and this sum has been forwarded to Child Line.



At the time of writing the hall was having a coat of paint on the walls to improve the general appearance, and keep it tidy until the funding is available for the planned major work.

### Valentine's Dance

St. John's will be holding a Valentine's dance on 16<sup>th</sup> February. Tickets will be available. For full details please see the notice board.

### Sure Start.

Sure Start are taking over from Ansley Little Angels running a stay and play group in the Village Church Hall on Wednesday mornings from 9.45 a.m.-11.30. They will be providing play activities for parents with children from birth to under 5s. There will be a small charge. For more information please contact Sure Start Children's Centre on 01827 718723

### Church Hall

Work has been progressing well over the last few weeks the floor is now finished and the heating pipes 'boxed in'. This part of the hall improvements has been paid for by a grant from Warwickshire Council Community Development Fund. The work on the outside has been badly delayed by the wet weather, but it is hoped this will be completed in the not too distant future.

HOWEVER it is with much regret that we feel it necessary to include the following sent by a member of our community.

"Happy New Year – Ansley Village- What a start!!

What society do we live in??

Brand new double glazed windows smashed beyond repair at the Church Hall.

Someone has no pride or respect for where they live. They target a building which is getting geared up to support the community.. Senior Citizens, through youth groups to Toddlers.

We have as a community to make a stand against mindless vandalism or end up in a slum.

What stand are you, as an individual, going to make before the real rot sets in??"

Please everyone keep a look out at all our properties and ensure any suspicions are reported.

### Church Fabric

It is hoped the work will recommence on the church fabric early in the New Year starting on the roof and as soon as the necessary permissions are to hand from the diocese the work on the different aspects of the Church drainage will commence.

The leak in the central heating pipe has been repaired

### Christmas Fair

The final total raised at the Christmas Fair held on 24<sup>th</sup> November was £1017.98.

Although this was down on the previous year it was still a wonderful effort and thank you to everyone who supported this event in any way.

### Christmas Tree Festival

This event was an amazing experience for all who helped and came to look. The 60 trees were fantastic as the Church took on a festive look when the trees were decorated and especially when the tree lights were lit. It was wonderful to see the many different

individuals, groups and businesses all working together as they decorated their chosen tree.

All the comments received over the event were favourable and everyone was much encouraged by the wonderful atmosphere created by all sections of the community helping with the event.

Financially the total received was £1400.66. This has been divided equally between the Warwickshire and Northampton Air Ambulance and the Church Fabric Fund. Donations given to purchase stars to place on the memory tree amounted to £113 which has been placed in the Churchyard Fund.

We are grateful to the Merevale Estate who supplied the beautiful trees, to Ron Morewood who worked so hard to provide and fit the stained boards to support the trees, and the farmers who provided practical help.

We wish to thank everyone who supported or helped in any way.

Many have already expressed an interest in decorating a tree in 2007. If you would like to take part in the Christmas Tree Festival next Christmas please do contact Margaret Kimberley on 024 7638 4680.

#### Other Totals

During 2006 the Church has given £737.50 to Spurgeon Child Care. This amount was raised by the Cake Bake in the summer, Margaret Oliver's Coffee evening and box opening and the carol service cash collection.

Each month a collection box is put out for Tear Fund's Children at Risk fund and the total raised over the 12 months was £130.08.

Thank you to all who support these worthy causes.

#### Electoral Roll.

Renewal of the electoral roll takes place in 2007 and every six years thereafter. Everyone must make a new application to be included on the new roll. No names are carried over from the old roll. Please see Margaret Silver, Margaret Antill or Moreen Freestone for a form. Complete the form and return it as soon as possible. Please remember you will not be able to vote at the AGM, and if you do not live in the parish, be buried in the churchyard or be married in the church without having completed a form, but please remember you must be a regular worshipper at the Church or have good reason not to do so at the present time. The completion of the forms gives an indication of the membership of the church.

#### Sponsor a cut

If anyone would like to sponsor the cutting of the grass in the Churchyard this year please complete an envelope enclosing your donation and return it to one of the wardens.

Perhaps you may like to do this in memory of a loved one, or just to help keep the Churchyard looking as tidy as possible. Please remember we spent over £3,000 cutting the grass in 2006.

#### Table Top Sale

On Saturday 24<sup>th</sup> Ansley Village community Café will be holding a table top sale in the Village Church hall between 12 noon and 2 p.m. The cost of the tables will be £5 each and anyone wishing to book a table please contact Margaret Antill on 01827 874520.

January, 2007

As we welcome in 2007, it doesn't seem five minutes since we fearfully approached the year 2000, when we were told all computers would go down, 'planes stop flying etc., but luckily for us nothing happened. Although our family did have a scare on New Year's Eve as just as the clock struck 12 someone (mentioning no names ) turned off the electric at the mains and everybody screamed. He did turn it on almost immediately, but for a split second we thought that all the predictions of doom and gloom had come true. However, my lasting memory of the millennium New Year was the magnificent firework displays going on all around us - it was fantastic, and the tradition has been kept on as the New Year sees many fireworks.

What did you have for Christmas? This is the question everybody asks, not only children, but everyone. It is strange how tastes change, and also the amount of cash that is spent at Christmas, but I was very surprised that some toys from years ago emerged again this year. There is the 'Tiny Tears' Doll which was popular over 40 years ago and very scarce. Then there is the 'Ferbie' - the all talking, all singing, strange fluffy toy which was popular about 10 years ago, the ugly Trolls of all shapes and sizes and of course 'Leggo' which is just as popular after many years. So, when you ask a small child what they had for Christmas, don't be surprised if the answer is very familiar.

The weather has been very surprising this winter. The flowers have forgotten it is winter, as have animals, like Hedgehogs which by December should have been safely tucked in for the cold weather. Our Camellia bush was covered in buds in the middle of December and a garden in Coventry had a Canna Lily flowering among the Primulas. One gardener on television picked a bunch of pink blossom which should flower in the Spring and also had a couple of Daffodils out - this was at the beginning of December.

We will soon be seeing the Snowdrops and I thought you might like this verse by Mary Vivian called 'Snowdrops'

I like to think that, long ago, there fell to earth some flakes of snow  
Which loved this cold grey world of ours,  
So much, they stayed as snowdrop flowers.

Marie Cove.