

# **Church of St. Laurence Magazine**

Parish including Birchley Heath, Ansley Common  
Ansley Village, Church End

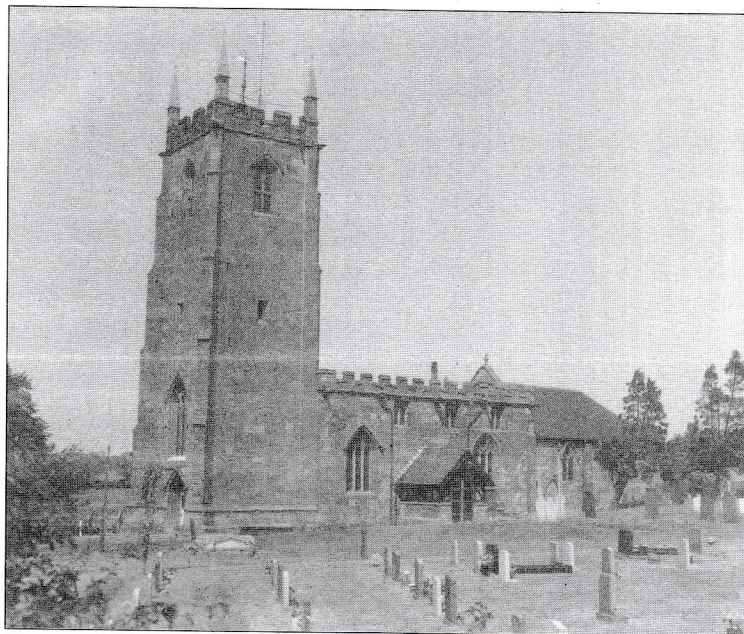
---

No: 956

FEBRUARY 2005

Price 25p

---



Vicar:

REV. PETER ALLAN

Tel: 024 7639 9070

Wardens:

MARGARET ANTILL  
MOREEN FREESTONE

Tel: 01827 874520

Tel: 024 7638 1833

St. Johns Leaders

DAVID & MARIE COVE

Tel: 024 7639 4114

---

**Print Centre 0800 389 4089**

Looking back to Christmas and forward to Easter.

On January 30<sup>th</sup> at St. Laurence we celebrated the Feast of Candlemas and recalled how Simeon and Anna welcomed Jesus when Mary and Joseph presented him in the Temple at Jerusalem. At that service gathered by candlelight around the font we said: Father here we bring to an end our celebration of the Saviour's Birth. Help us, in who He has been born, to live His life that has no end. And after we extinguished our candles Here we now stand near the place of baptism. Help us, who are marked with the cross, to share the Lord's death and resurrection.

Recalling the joys of Christmas we also remembered those who had faced tragedy over the Christmas season, those who suffered through the Tsunami and those in our community who had lost loved one at this time. At the same time we looked forward to Easter with hope and excitement as I hope you do too. I believe that there are many signs of hope in church and village life and here are a few reasons to celebrate:

At St. Laurence we are becoming quite excited by Godly Play a new way of presenting the Good News of Jesus especially designed for younger children but suitable for all ages. We have submitted several grant applications for the Village Hall and look forward to refurbishment shortly.

St. John's Hall now has a new kitchen and storage and we are already preparing for Phase Two - new toilets, meeting room and further purpose built storage.

We are shortly to prepare children not yet ready for confirmation for their First Communion. If you or your child is interested please let me know.

But most of all my prayer is that whatever you are doing you will know the presence of Lord Jesus who came to this earth for us on the first Christmas Day and the power of the Lord Jesus who rose from the dead the first Easter Day.

Your friend and Vicar.

Peter.

## February What's On

### St. Laurence's Church Services

Sunday 6 <sup>th</sup>	Next to Lent	10.30 a.m.	All Age Worship
		6.30 p.m.	B.C.P. Holy Communion
Wednesday 9 <sup>th</sup>	Ash Wednesday	7.30 p.m.	Special Service for Ash Wednesday
Sunday 13 <sup>th</sup>	Lent 1	10.30 a.m.	Holy Communion & Baptism
		6.30 p.m.	Evensong
Sunday 20 <sup>th</sup>	Lent 2	10.30 a.m.	All Age Worship
		6.30 p.m.	Holy Communion
Sunday 27 <sup>th</sup>	Lent 3	10.30 a.m.	Holy Communion & Baptism
		6.30 p.m.	Evensong

### St John's Hall Ansley Common Services

Wednesday 2 <sup>nd</sup>		9.00 a.m.	Holy Communion
Sunday 6 <sup>th</sup>	Next to Lent	10.30 a.m.	Family Worship & Sunday School
Sunday 13 <sup>th</sup>	Lent 1	10.30 a.m.	Holy Communion & Sunday School
Wednesday 19 <sup>th</sup>		9.00 a.m.	Morning Prayer
Sunday 20 <sup>th</sup>	Lent 2	10.30 a.m.	Family Service
Sunday 27 <sup>th</sup>	Lent 3	10.30 a.m.	Holy Communion & Sunday School

### Other Activities at St. John's Church Hall

Tuesdays	10.30 a.m.	Krazy Kettle Kafe commencing 1 <sup>st</sup> February
Alternate Wednesday	2.00 p.m.	Gentle Keep Fit
Wednesdays	6.00 p.m.	A.C.Y.C.
Wednesday 5 <sup>th</sup>	2.00 p.m.	Hall Committee meeting
Fridays		Ball Room Dancing

### Activities at Village Church Hall

Monday 7 <sup>th</sup> 21 <sup>st</sup> & 28 <sup>th</sup>	7.00 p.m.	Links - Youth Club
Tuesday	10.00 a.m.	Senior Citizens
Wednesdays	1.30 p.m.	Little Angels - Parent & Toddlers
Wednesdays	10.30 - 12.30 p.m.	Community Café
Wednesday 9 <sup>th</sup> & 23 <sup>rd</sup>	7.30 p.m.	Bingo
Thursday 10 <sup>th</sup>		Parish Council Meeting
Thursday 24 <sup>th</sup>	7.30 p.m.	P.C.C.

### Other Parish activities

Monday 7 <sup>th</sup> & 21 <sup>st</sup>	2.30 p.m.	Prayer Group meet 10 Nuthurst Crescent.
Wednesday 2 <sup>nd</sup> & 16 <sup>th</sup>	7.30 p.m.	Wednesday Fellowship meet 10 Nuthurst Cres.
Thursday 3 <sup>rd</sup> & 17 <sup>th</sup>	7.30 p.m.	Ansley Common Fellowship.

### From the Registers

#### Baptisms

On Sunday 12<sup>th</sup> December at the morning service Kole McBride ? although a little reluctantly at first was baptised. Kole with another young friend decided, during the sermon, that teddy needed to be baptised as well.

During the evening service Joshua Oxford was baptised by Rev. John Law. Joshua was as good as gold, he was content to be carried by Rev. Law to meet everyone present and looking in wonder at the congregation.



#### **Funerals**

The funeral of Frank Baskett (75) of Ansley Common took place at St. Laurence's on 15<sup>th</sup> December followed by burial in the churchyard. A miner for forty one years at Ansley Hall, Haunchwood, Arley and Birch Coppice he had two pit accidents which diminished neither his abilities nor his spirit. A man of deep compassion and high standards, his interests included motorbikes, his Jaguars, horses and dogs. Married to Joan who's passing he deeply mourned, he will himself be deeply missed by his three 'boys', Stephen, Paul and Andrew, by their families and by his many friends.

Born and brought up in Stockingford May married Jo Bailey at ST. Paul's in 1972. Entering a long established Ansley family she soon became part of our community joining first St. Laurence Church and then from its inception the Senior Citizens. She worked most of her life as a tailoress and continued to exercise her skills well into retirement. Much loved by her neices and nephews and their children and grandchildren and by her many friends she will be greatly missed. Her funeral took place at the Heart of England Crematorium on 22<sup>nd</sup> December.

The family travelled from Cornwall for the funeral of Mary Pardoe, which took place at St. Laurence on Thursday 6<sup>th</sup> January, being buried in the churchyard with her husband Joe who died in 1975. Mary had lived nearly all her 91 years in Ansley Common and with husband Joe had ran the Chapel End Liberal Club for some years.

The funeral took place on Monday 13<sup>th</sup> January at St. Laurence Church of Alan Hall, a long - standing member of St. Laurence's. Alan's great passions were his garden, travelling and Crown Green Bowls. He served for seven years in the Fleet Air Arm and worked most of his life in car manufacture at Standard-Triumph and Jaguar. He is deeply mourned by his wife Joan and many friends.

#### **Ash Wednesday**

This joint service with St. Wilfrid's and St. Michael's will this year be at St. Laurence. This year, nearly as early as possible, it is on 9<sup>th</sup> February at 7.30 p.m.

#### **St. John's Christmas Sale**

On Saturday 11<sup>th</sup> December St. John's had their Christmas sale. There was a queue waiting to come in before the opening and Father Christmas was kept very busy. There were plenty of things for sale and a total of £350 was raised for hall funds. Thank you to everyone who helped in any way.

#### **St. John's Christmas evening**

At 7.30 on Friday 17<sup>th</sup> December the people from Ansley Common got together and had a fun time singing Christmas Songs and having mince pies etc. This was an enjoyable evening. Thank you to Maureen Webb who came and played. A further £22 was raised for hall funds.

#### **Christmas Thank you's**

The traditional Christmas services were appreciated by all who attended. Thank you to those who came and decorated the Church for the festive season, to those who read the lessons and helped in any way to bring the true meaning of Christmas to the different congregations. We are especially grateful to Rev. Raine who came on Christmas morning to celebrate Communion at the 10 30 a.m. service.

### **Thank you**

We wish to extend our thanks to the family and friends of John Beale who have given £200 to the fabric fund towards the work to be carried out on the tower.

### **Church Flowers**

All through the year we try to keep fresh flowers in Church especially on the altar and a few vases around the Church. The brasses also need a polish regularly. It takes between 1½ to 2 hours once a fortnight to keep the church looking welcoming. Often people like to give flowers or a donation towards the flowers to be put in church in memory of a loved one or on an anniversary. If you would like to contribute in time or financially please speak to Margaret Kimberley so that a suitable rota can be arranged for the year.

### **Spurgeon Child Care**

The cash collection of £172.29 taken at the carol service has, as usual, been sent to Spurgeon Child Care.

### **Christingle service**

Over 50 people attended the combined service at St. John's on 9<sup>th</sup> January and the collection of £63.30 was sent to the Children's Society who sponsor this service. Amid a wonderful atmosphere of togetherness we felt the light of Jesus in our lives. Many thanks to the people who worked so hard to prepare for this service.

### **Indian Ocean Earth Quake**

On Sunday 2<sup>nd</sup> all the cash collections and on Sunday 9<sup>th</sup> a plate for the appeal was put out and a total of £313 has been sent from St. Laurence & St. John's Churches to help those caught in this tragic event.

### **Poppy Tins**

We have been advised that a total of £63 was in the poppy tins that were in Church.

### **St. John's Hall**

At the time of writing work on the hall was in progress. The new central heating boiler is working, the new storage cupboards fitted, the wiring is in place and the plaster has completed his part of the work. The fitting of the new kitchen and the completion of the electrical work are in hand. This work should benefit all the hall users for years to come.

Full activities should recommence by the beginning of February.

A very big thank you to everyone who has worked so hard to get these improvements done to the hall

Provided the work is completed in time, the ladies of the Common will on Tuesday February 1<sup>st</sup> from 10.30 a.m. be opening a cafe calling themselves the **Krazy Kettle Kafe**. This will be continuing each Tuesday Morning. Do drop in and have a drink and a chat. It will be good to see the new kitchen put to use.

### **January Magazine**

Apologies to the businesses who's advertisements were omitted from the January magazine, and to our readers who received two blank pages.

February 2005.

As we buy our fruit and other goods, it is amazing how the world seems to have shrunk and other countries seem so much nearer and more accessible. We have oranges from Spain and Israel, apples from South Africa, as well as England, Lamb from New Zealand - the list goes on. There must be an enormous work force behind all the transportation and if you are on the Motorway, there are lorries, too many to count, carrying all sorts of goods and this is only a small part as there is also freight by air, rail and sea. If you look at many of the large lorries you will see the word 'Logistics' and I consulted my dictionary and discovered this originally meant the art of moving and quartering troops or supplying and maintaining a fleet. Now it has been adopted as the word for transportation of goods of every kind.

My mother always referred to this month as 'February fill dike', but in recent years we haven't needed any more rain as our springs, rivers and reservoirs are full to overflowing. Lots of people say they don't like this time of year, but I think it is amazing as we see the bulbs all shooting through, some winter flowering shrubs in full bloom and the birds bringing colour to the garden. February is like a ray of hope and points to spring.

The weather is said to be the most popular subject of conversation for the English and I can very well believe it, as we in the Midlands haven't had the very damaging winds and blizzards, causing flooding and misery, but we do have some very unseasonal weather. In January some days the temperature was twice the average for the time of the year, and have you noticed now how people dress? You can see children and adults going to school and work with no top coat or anorak, and even in short sleeved shirts and tops. Even winter boots are no longer sensible with non-slip bottoms and fur lining, but now are thin simulated leather with 3 inch or 4 inch heels. When did you last hear of someone having chilblains, and most children have never needed to have a hot water bottle or, in our case, the shelf out of the oven wrapped in warm cloth. However, I wouldn't wish to see the harsh winters again and hope this weather continues until Spring and gets warmer.

I was recently reading my Bible Notes and one quote, although serious, made me really laugh. It said 'Instead of always having to be the bride at the wedding and the corpse at the funeral, learn to put others first'. The message is right, but I don't honestly think even the most selfish person wants to be the corpse at the funeral from choice.

Marie Cove.