

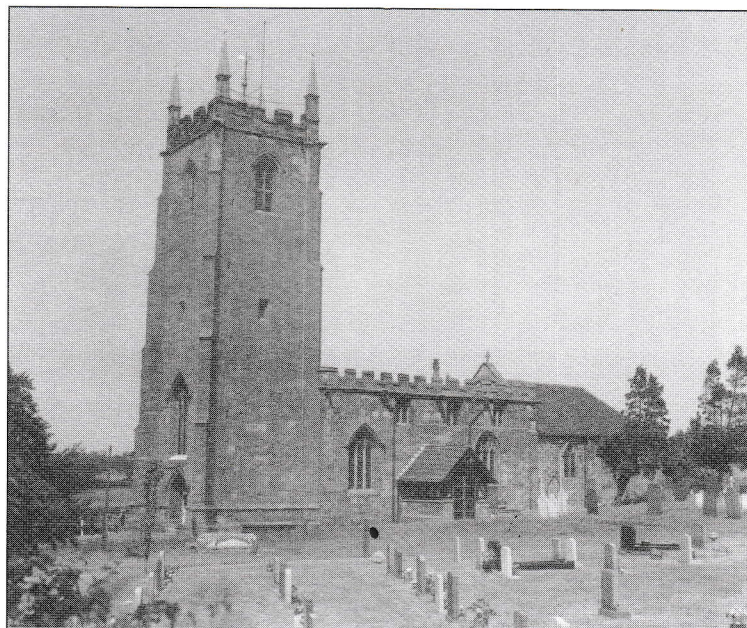
Church of St. Laurence Magazine

Parish including Birchley Heath, Ansley Common
Ansley Village, Church End

No: 990

JANUARY 2008

Price 25p



Vicar:

REV. PETER ALLAN

Tel: 024 7639 9070

Wardens:

MARGARET ANTILL
MOREEN FREESTONE

Tel: 01827 874520
Tel: 024 7638 1833

St. Johns Leaders

DAVID & MARIE COVE

Tel: 024 7639 4114

Lay Reader:

MANDY WATTS

Tel: 024 7639 7654

www.ansleychurch.org

Print Centre 0800 389 4089

January.

It is a very varied world in which we live. The months are a mixture of Roman gods, Roman emperors (July and August) and Roman numbers (September to December), the days of the week are pagan gods also and the year is Anno Domini (The Year of the Lord).

Perhaps we would like to live in a world that was single mindedly Christian. But it isn't. It's a strange mix of earth and heaven.

So back to January. Named after two headed Janus - looking back and looking forward. The origin of the name of the month might seem odd but the message is true for us all. We look back with thanksgiving to God for the joys we have celebrated and for drawing alongside us and supporting us in our troubles. Guided by the Holy Spirit, we look forward with excitement and uncertainty to the coming year.

We do not know what will happen though we have our plans. I will be away for example for three months from March to June on sabbatical.

(I will talk more about this in the February issue).

What we do know is this. God will have joys that he longs to share with us AND in our troubles
Jesus will always be with us.

HAVE A VERY HAPPY NEW YEAR,

Your friend and Vicar,
Peter

St. Laurence's Church - Services

Sunday 6th	Epiphany	10.30 a.m.	Morning Worship
		4.00 p.m.	Family Service
		6.30 p.m.	Holy Communion & Ministry of Healing
Sunday 13th	Epiphany 2	10.30 a.m.	Holy communion
		6.30 p.m.	Evensong
Sunday 20th	Epiphany 3	10.30 a.m.	Morning Prayer
		6.30 p.m.	Holy Communion & Ministry of Healing
Sunday 27th	Candlemas Memorial	10.30 a.m.	Joint Service at St John's
		6.30 p.m.	Special Memorial Service

St John's Church Hall Ansley Common Services

Sunday 6th	Epiphany	10.30 a.m.	Family Service
Wednesday 9th		9.00 a.m.	Morning Prayer
Sunday 13th	Epiphany 2	10.30 a.m.	Holy Communion
Sunday 20th	Epiphany 3	10.30 a.m.	Family service
Wednesday 23rd		9.00 a.m.	Holy Communion
Sunday 27th	Candlemas	10.00 p.m.	Holy Communion

Other regular activities

Most regular activities will commence in the week of 7th January following the Christmas and New Year holiday, full details on the notice boards

From the Registers

The baptism of Eloise and Samuel Dutton took place at St. Laurence's on November 18th. What a joyous occasion as we thanked God for their birth and the joy they already bring and the joy we pray they will discover for themselves in Jesus. We are hoping for some pictures on the website.

On November 25th at St. John's Ansley Common we celebrated around the font from the original church, the baptism of Michael (Mickey) Payne son of Gary and Rachel. It was a wonderful occasion for the folk at St. John's it was lovely seeing Barbara looking so proud of her grandson who enjoys coming with her to the services.

Funerals

The funeral of Josephine Satchwell – Jo (67 years) took place on 16th November, in St. Laurence Church followed by Cremation, her ashes being interred at St. Wilfrid's. Jo never enjoyed good health, but this wasn't to stop her helping on the allotment with husband Tony, and they were more often seen together than apart. Jo's family were most important to her, she was a loving wife, mother and grandmother and she will be greatly missed by her family, friends and neighbours.

The funeral of Lynda Faulconbridge took place at St Laurence's on Friday 23rd November followed by burial in the churchyard.

Lynda's loyalty and courage were reflected in the story of the Good Samaritan read at the service. The church was full as many friends and family came to mourn Lynda's premature passing. She will be sorely missed by many, but especially her husband Graham and her sons Craig and Christopher.

On 30th November the ashes of Florence Sherwood aged 94 were interred in the family grave in the churchyard.

Garden of Peace

The Garden of Peace is for the interment of ashes especially for those not requiring a visible reminder of their loved ones but would prefer for their remains to be in the Churchyard.

It is a unique place in the churchyard, open to all for the interment of ashes only. No other commemoration e.g. flowers or plaques are permitted. Prior arrangements are to be made with incumbent or wardens, who will notify of the procedures and cost. Names may be entered into a Book of Remembrance on request and space will be provided for a message.

Candlemas

As is our custom we will be holding a joint service at St. John's at 10.30 a.m. on 27th January. (There will be NO service at St. Laurence that morning) it is at this service we particularly think of Jesus coming into the world as a light and at the end we will all be given a lighted candle to reflect the coming of 'That Light'.

Memorial Service

This year we will be holding our annual Memorial Service on Sunday 27th at 6.30 p.m. everyone is most welcome to this service to remember loved ones who have gone before us to be with our Lord. Their names, if desired, will be read out during the service, with those who have died recently in our parish. It does not matter how long ago, if you would wish to light a candle to their memory please feel free to do so.

Village Christmas Fayre

On Friday 23rd November the Village had their Christmas Fayre. It was a slightly unusual event in that usually most people arrive early and are eager to make their purchases as soon as it is declared open. However at 7.30 the number of people in the hall was very disappointing. However this soon changed within half an hour the number attending had greatly increased and we had a very successful and happy evening. A total of £685 was raised and the money for the wreaths has yet to be added.

St. John's Prize Bingo

The prize bingo held on 3rd December at St. John's hall was a very happy time for all. It is quite amazing how some times the prizes are evenly spread around the different tables, but this time was very different with one table being particularly lucky. Thank you to all who donated the prizes both for the bingo and the raffle. A total of £115 was raised from this event which will help towards the planned hall improvements.

Ansley Village community Café

After running for just three years it was decided at the end of October that this would finish as the numbers attending regularly over the last twelve months did not make it viable. However over the three years they did manage to increase the village Church Hall funds by £752 in rent and they also were able to purchase two of the new tables. The

remaining funds amounting to £345.06 have been paid to the Village Church Hall account as was agreed at the outset.

The Hall committee and P.C.C. wish to thank all those who supported the café over this time, and for the additional income it has generated.

The Committee have also agreed that they will continue the table top sale and this has been arranged for this year on 23rd February (more details next month).

New Doors at St. John's

Following the break in and damage in May the St. John's hall committee with the very generous help of the Krazy Kettle Kafé have had new doors fitted to both the front and rear of the hall. These very smart doors are now secure and do improve the appearance of the hall.

Our Vision – Our Policy Document

It was at the October meeting that the P.C.C. started to look again at our aims etc. One aspect that has come to the fore is that quite often people in the parish are ill or have a particular issue, and would appreciate a visit, or mention made during service intercessions, but this does not get communicated to the vicar or P.C.C. members. To try and improve our awareness it was decided that each month the Prayer request slip below would be included and also in Ansley News. Please make use of these slips and help us meet the needs of all parishioners.

The Ley Group Young People's Project

Firstly I would like to introduce myself as the new youth worker for the Ley Group Young People's Project. My name is Sarah Tiffany and I have lived in New Arley for 21 years. I have been working in New Arley as a volunteer since 2005, I have also worked in Ansley Village, Ansley Common and Fillongley for 6 months of this year.

I am hoping to set up Ansley Village Youth Club again as well as a drop in for 11-19 year olds, so that they can access computers for home work and job search. Within this group we hope to also provide advice and guidance for the young people of Ansley. We currently have a similar project running in New Arley and it has been very successful. We need the help of the local community to make this happen. Without people donating their time we cannot provide a quality service for the young people of Ansley. Do you think that you could provide 1 hour a week to help out at either youth club or the Ansley Drop in? In one hour you could be playing games, helping a young person to bake a cake, help them to do their home work or fill in an application form.

If you are interested please call Sarah Tiffany on 0797 1772 212

Sarah Tiffany.

Prayer Requests

If you would like someone or a particular situation remembered in prayer at our Sunday Services both at St. Laurence and St. John's please hand the slip to a member of the Church Congregation or contact the Vicar on 024 7639 9070. Please remember the vicar would be pleased to visit anyone who is sick, but he does need to know again please ring.

Please pray forwho is

January, 2008

I love Christmas and especially buying Christmas presents and Christmas food. Every year I try and listen for hints of what different relatives would like, or consult others. It was spoilt slightly in 2007 as teenage grandchildren asked for money, two of them for Driving Lessons. This didn't feel right, but a small wrapped present as well made it feel more like a Christmas present. After all we were set the example by the Wise Men who picked their gifts every carefully for the Baby Jesus. They were beautiful but practical as well and it's nice to think that these were in lovely caskets to be opened by Joseph and Mary, with great surprise and wonder that their Son had been honoured not only by the presence of the Wise Men, but by such wonderful gifts.

By the time you read this, Christmas will be over for another year - it goes so quickly. Now we look forward to 2008, a New Year, but as we sing Auld Lang Syne, I always shed a tear and remember Christmas and New Years past. How many resolutions were made, and broken; how the tradition of 'first footing' has gone through the generations with a dark male bringing in bread, salt and a piece of coal from Arley Colliery. The younger generations of our family love it. They all want to be 'first footer', as everyone gives him a silver coin. It is the same year on year, but everyone of all ages take part, and then enjoy singing carols and well loved songs until very late.

If you have lived in the same place for many years, you can take your surroundings for granted. This comes home to me, who has always lived within 3 miles of Ansley, when I receive the Co-op Calendar each year, which shows photos of local places. There are some lovely scenes and you find yourself wondering why you never noticed how beautiful Warwickshire is. There was a photograph of Beehive Cottage at Bentley. It is like something out of a fairy tale and, in fact, one of my Grandchildren was convinced it was the witches house in Hansel and Gretel, especially as Bentley Woods are very close by. If you have time to stop and look, there are certainly some beautiful places very near to home.

Wishing you all the best of health and happiness for 2008.

Marie Cove.