

# Church of St. Laurence Magazine

Parish including Birchley Heath, Ansley Common  
Ansley Village, Church End

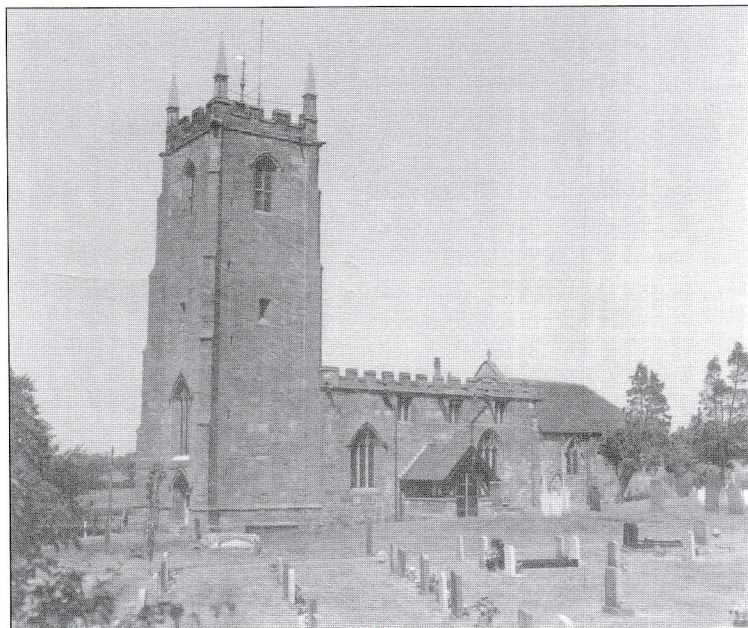
---

No: 955

JANUARY 2005

Price 25p

---



Vicar:

REV. PETER ALLAN

Tel: 024 7639 9070

Wardens:

MARGARET ANTILL

Tel: 01827 874520

MOREEN FREESTONE

Tel: 024 7638 1833

St. Johns Leaders

DAVID & MARIE COVE

Tel: 024 7639 4114

---

**Print Centre 0800 389 4089**

They came to worship Him...

January 6 marks the end of the Twelve days of Christmas and recalls the visit of the magi to Jesus. We shall be celebrating Epiphany as members of St. Laurence will also go on a journey from their familiar place of worship and to St. John's for a united Communion and Christingle Service on Sunday 9 January at 10.30 a.m. Do join us there.

And they gave their gifts....

As part of our offering of worship God calls us to give the praise of our lips and the praise of our lives. An essential part of our lives is money and thus a vital part of our worship is giving. We are called to give to many vital causes but it is necessary to give to the work of God's church. Giving is vital to meet increasing costs but sacrificial giving is so much more than that. It is our way of saying 'Thank you ' to God for all He has given to us. It is our duty and our joy. I will be writing in more detail about this issue to all on the electoral roll and preaching about giving at both the morning and evening services. At the end of January I will be asking you to make a commitment to pray about your giving and, if you are so led, to increase your giving accordingly. There is so much we long to do. We must not be restricted in our God-given tasks by lack of money.

But the question must be asked: 'Are we doing what we can with what we have already been given? Are we finding new sources of funding wherever possible? Yes, I believe we are (though we can always do better!). We have obtained funding for a new kitchen and storage at St. John's. (The Hall will be closed for two weeks from 10-22 January for the new work.) We are investigating, or applying for, funding for refurbishment of the Village Hall, refurbishment of, and extension to, St. John's Hall and for a youth worker to serve the Ley Group ( Ansley, Arley, Corley, Fillongley).

Thank you for all that you are already doing. May we all continue to help our church and community in every way.

Your friend and vicar,

Peter

St. John's will then be closed for two weeks to build a new kitchen and back room.

## January What's On

### St. Laurence's Church Services

Sunday 2 <sup>nd</sup>	Christmas 2	10.30 a.m.	All Age Worship
		6.30 p.m.	B.C.P. Holy Communion
Sunday 9 <sup>th</sup>	Epiphany 1	10.30 a.m.	Joint service at St. John's
		6.30 p.m.	Evensong & Baptism
Sunday 16 <sup>th</sup>	Epiphany 2	10.30 a.m.	All Age Worship
		6.30 p.m.	Holy Communion
Sunday 23 <sup>rd</sup>	Epiphany 3	10.30 a.m.	All age Worship
		6.30 p.m.	Evensong
Sunday 30 <sup>th</sup>	Candlemas	10.30 a.m.	Candlemas service
		6.30 p.m.	Memorial Service

### St John's Hall Ansley Common Services

Sunday 2 <sup>nd</sup>	Christmas 2	10.30 a.m.	Family Worship & Sunday School
Wednesday 5 <sup>th</sup>		9.00 a.m.	Holy Communion
Sunday 9 <sup>th</sup>	Epiphany 1	10.30 a.m.	Christingal
Sunday 16 <sup>th</sup>	Epiphany 2	No service	Hall Closed for building work
Wednesday 19 <sup>th</sup>		9.00 a.m.	Morning Prayer
Sunday 23 <sup>rd</sup>	Epiphany 3	10.30 a.m.	Family Service
Sunday 30 <sup>th</sup>	Christmas 1.	10.30 a.m.	Songs of Praise

### Other Activities at ST. John's Church Hall

Tuesdays	10.30 a.m.	Community Café commencing 1 <sup>st</sup> February
Alternate Wednesday	2.00 p.m.	Gentle Keep Fit
Wednesdays	6.00 p.m.	A.C.Y.C.
Wednesday 5 <sup>th</sup>	2.00 p.m.	Hall Committee meeting
Fridays		Ball Room Dancing

### Activities at Village Church Hall

Monday 17 <sup>th</sup> 24 <sup>th</sup> & 31 <sup>st</sup>	7.00 p.m.	Links - Youth Club
Tuesday	10.00a.m.	Senior Citizens
Wednesdays	1.30 p.m.	Little Angels - Parent & Toddlers
Wednesdays	10.30 - 12.30p.m.	Community Café
Wednesday 12 <sup>th</sup> & 26 <sup>th</sup>	7.30 p.m.	Bingo
Thursday 13 <sup>th</sup>		Parish Council Meeting
Thursday 20 <sup>th</sup>	7.30 p.m.	P.C.C.
Saturday 15 <sup>th</sup>	10.00 a.m.	Community Café Table Top Sale

### Other Parish activities

Monday 10 <sup>th</sup> & 24 <sup>th</sup>	2.30 p.m.	Prayer Group meet 10 Nuthurst Crescent.
Wednesday 5 <sup>th</sup> & 19 <sup>th</sup>	7.30 p.m.	Wednesday Fellowship meet 10 Nuthurst Cres.
Thursday 6 <sup>th</sup> & 20 <sup>th</sup>	7.30 p.m.	Ansley Common Fellowship.

### From the Registers

#### Confirmation

On Saturday 4<sup>th</sup> December Joy Pethick along with 140 other candidates was confirmed at the Cathedral. This was the first time that all the Churches of the diocese had come together for such an occasion. Joy had been very nervous, until a few days before but on the day she was able to enjoy the occasion and we all pray that the belief she, and we, confess and the joy she felt after the service will remain with her for the years ahead.

#### Funerals

Sally Soley, although an Ansley girl born and bred, lived the latter part of her life at Oldbury Grange Nursing Home where she died on November 13<sup>th</sup>. Her funeral took



place at the Heart of England Crematorium on Friday November 19<sup>th</sup>. Sally leaves a son Jack, and several grand-children and great grand-children.

The funeral of Margaret Adkins took place at the Heart of England Crematorium on 29<sup>th</sup> November. Her faith which was nurtured as a child at Ansley Village Congregational Church, developed as an adult at St. Laurence where she was confirmed and sustained her throughout her life. She had a wonderfully happy marriage to Fred and was deeply saddened by his death. A lady who loved giving hospitality she had a strong commitment to all she held dear. In her final years she found peace and joy at Merevale Grange. She is mourned by her children Jean and John and her many family and friends.

The funeral of John Thomas Paul (73) who had lived in Ansley Village since the age of four took place at St. Laurence on 6<sup>th</sup> December followed by committal at the Heart of England Crematorium. On the completion of his apprenticeship, interrupted by National Service he set up his own building business. Work included the building of Ansley Social Club and the re-development of what is now Croft Mead, but the work of alterations, development and investment in property led him to undertake major works throughout the Midlands. His community service included serving as Councillor on Atherstone Rural District Council and as a Rotarian setting up North Warwickshire Talking Newspaper. John faced illness with outstanding courage and determination. He is deeply mourned by family and friends especially his wife Marlene and their sons Andrew and Lee.

We were all shocked at the sudden death of Mary Williams from Bretts Hall on 25<sup>th</sup> November. Her funeral took place at St. Laurence on 8<sup>th</sup> December. Mary lived all her 59 years in Ansley Common. Our prayers continue for her husband Tony and daughter Gemma as they come to terms with their sad loss.

#### **The Ministry Leadership Team**

The team were authorised at St. Michael's on Sunday 31<sup>st</sup> October by Arch Deacon Mark Bryant. They have accepted the task to meet together to find ways of bringing the Gospel to others. This does not mean that others need now do nothing. We all have to do our bit by words and deeds and actions to spread the Good News.

#### **Christmas Concert by Sutton Brass**

This was a very enjoyable evening. Those who were not able to attend missed out on a very professional presentation of various pieces of Christmas music. Some of the arrangements were by members of the Ensemble. There were also carols to sing ourselves. Thank you to Sutton Brass, for a very good evening, and to those who provided and served the refreshments. A total of £107 was added to the General Fund after a donation of £60 to Sutton Brass for their expenses.

#### **Flute Concert**

On Friday 10<sup>th</sup> we were entertained by Jane Kimberly's students. They ranged in age and experience from beginners with one student having been with Jane for just two weeks, to one who had come back from university. Each one played a solo and there were group pieces with everyone joining in for "We wish you a Merry Christmas". Over £143 was raised for the Church Yard fund and £40 to the General Fund for the hire of the Church. Thank you everyone for a wonderful evening.

#### **Spurgeon Child Care Coffee Evening**

Many thanks to all who braved the first snow of winter and turned out to the coffee evening. Together with the bring and buy and boxes £350 has been sent to Spurgeon Child Care. Thank you for your continued support. Margaret Oliver.

### **Christmas Fayre Events**

On 3<sup>rd</sup> December the annual Christmas Fayre was held in the Village Church Hall. Although it was felt the number attending was down on the previous year a total of £839 was raised (after £30 paid for the hire of the Hall) on the evening with at least a further £230 from Christmas Wreaths still to be collected. An overall total of £1079 +. Many thanks to all who helped, gave and supported in any way towards this very enjoyable evening.

### **St. John's**

Many of you will know that the St. John's congregation and Ansley Common residents have been busy fund raising to improve the kitchen. We have also been awarded two grants, one of £5000 from the Coal Fields Regeneration Trust for work on the kitchen and another for £2600 from Warwickshire county council Community Development Fund. This is for storage cupboards. With these grants and the money raised, work on the new kitchen, new heating system and cupboards will start this month. If all goes to plan some work will be carried out from 3<sup>rd</sup>, it is hoped that the hall will be available in the evenings that week. However after the joint service with St. Laurence on 9<sup>th</sup> the hall will have to be closed for two weeks. While it is disappointing not to be able to recommence activities at the beginning of the year, we hope the work will make a vast improvement to the facilities available.

The hall committee will then be looking at how to proceed with the other improvements that we wish to make to bring the hall up to the standard we would all like to see.

If you wish to see any activity being available in either of the halls or would like to hire a hall at any time please do have a word.

### **Christingal service**

Now that St. John's has a service every week it is felt important that they feel part of the whole Church in Ansley. For this reason there will be joint services from time to time. As St. John's day is on 27<sup>th</sup> December it was felt that a Sunday near the beginning of the year would be an appropriate time for the joint service to be held at St. John's. As 9<sup>th</sup> January is the first Sunday in Epiphany and the Christingal service, which celebrates the spreading of the Gospel to all the world it was felt that it is an appropriate time for such a celebration and a joint service. There will be **NO** service at St. Laurence that morning.

### **Table Top Sale**

On Saturday 15<sup>th</sup> Ansley Community Café are holding a table top sale in the Village Church Hall. To book a table, please contact M. Antill on 01827 874520. The cost will be £5 per table. The hall will be open from 9 a.m. for table holders to set up, and open to the public from 10 a.m. Entrance will be 50p per person and the café will be in operation selling rolls etc. The proceeds will be used by the café for hall improvements.

### **Memorial Service**

The annual memorial service will be held on Sunday 30<sup>th</sup> at 6.30 p.m. Everyone who has lost a loved one in Ansley the last 12 months will receive a personal invitation, but anyone who feels the need to come and remember a loved one will be most welcome. If you know of anyone who has lost a friend or family member however long ago, who would find comfort from coming to such a service, please tell them about the service, and invite them to come along. The names of anyone who has died can be entered in the book of remembrance and their names will be read out during the service and candles lit to their memory.



ANSLEY PARISH COUNCIL: Traffic Calming - plans for this in Ansley Village still being drafted. W.C.C. will hold public exhibition during Spring 2005, to which all members of community will be invited, to look at draft proposals and make comments. All homes will be sent a flyer advertising date and venue nearer the time.

Affordable Housing - Inquiry into the new local plan commences 10.1.05. Anyone wishing to raise questions as to how the proposed plan was presented to members of the public can do so by emailing Simon [Osborn@northwarks.gov.uk](mailto:Osborn@northwarks.gov.uk).

Mobile Community Police Office - This was launched last month, to which Parish Council made a donation. Aims to make community beat officers more accessible to the public in the more remote rural communities. Timetable: Ridge Lane Car Park - 11.1.05 & 7.2.05(3.30pm-7.00pm), Ansley Club Car Park 17.1.05&10.2.05(9am-12pm) and Ansley Common One Stop 18.1.05& 11.2.05(9am - 12.30pm)

Flexibus Service 226: This service particularly useful to mobility impaired. Vehicles have an electric life, can carry up to 4 wheelchairs and a trained care assistance on board to help passengers. Service will operate on Tuesdays commencing 2/11/05 taking passengers from Atherstone, through Birchley Heath, Church End and Ansley Village to Arley, Fillongley, Corley and Bedworth. For more information contact Freephone 0500 21 22 25.

Next meetings: Jan. 13<sup>th</sup>, Feb. 10<sup>th</sup>, March 10<sup>th</sup>, April 14<sup>th</sup>.

January 2005

So Christmas is over for another year and it is so fleeting after all the preparation, but this winter has already been very unusual. Daffodils were flowering in Pembrokeshire at the beginning of December; ducklings hatched in Lincolnshire and frog spawn floated in ponds in Wales. Perhaps global warming is indeed starting, and the birds and animals must be very confused, because I'm sure we are.

It doesn't matter how old I get, the children's Nativity Play always thrills me. We never seem to have two shepherds the same, the Kings are not always regal, but it is Mary and Joseph who pull at heart strings. One year some time ago Joseph wouldn't allow Mary to nurse baby Jesus. Another year we were absolutely marred out with donkeys, sheep and a camel but luckily did manage to cast the main parts. We also had a little fellow who didn't want to be in the play but did appear in every scene, but after all he was only 2 years old. Someone said Christmas 2004 one shop sold out of tea towels, as so many were needed for head dresses, so I say 'Long live the Nativity Play' which certainly portrays the true story of what Christmas means.

As we go into 2005, it is evident that we are all obsessed with 'time', and there is never enough of it. We are always looking forward to what needs to be done, and worrying if we will get things done in time, and very rarely seize the moment and enjoy the day. This is perhaps what photographs are for, as they capture the times, people and places we never want to forget, and we can look at them and remember. This is especially true with children and grandchildren as they grow so fast, the years zip by and those moments are gone for ever, and at St. John's we have taken some photographs of our events and special services, so that we can look back and see just how the hall changes and remember some very happy times.

So this New Year I wish you all lots of peace and quiet and time to sit quietly at the day's end and think of 'nothing' or to simply remember all the good things in life.

Marie Cove.